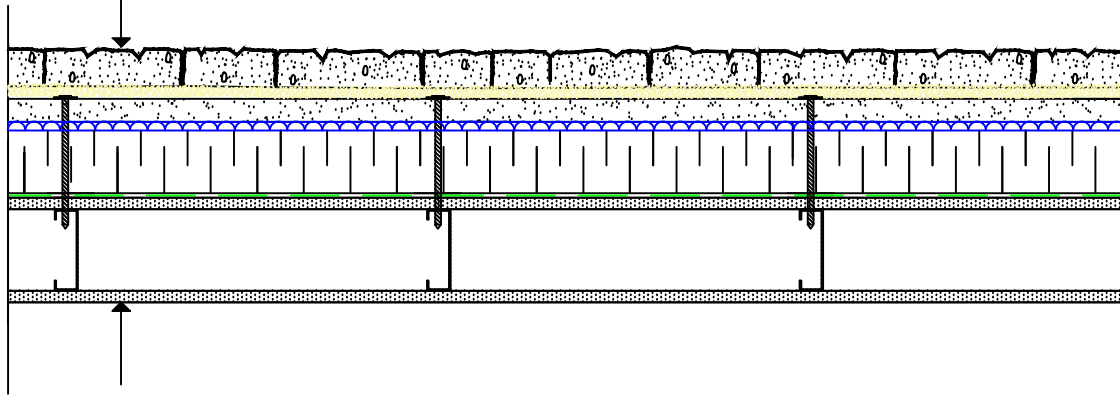
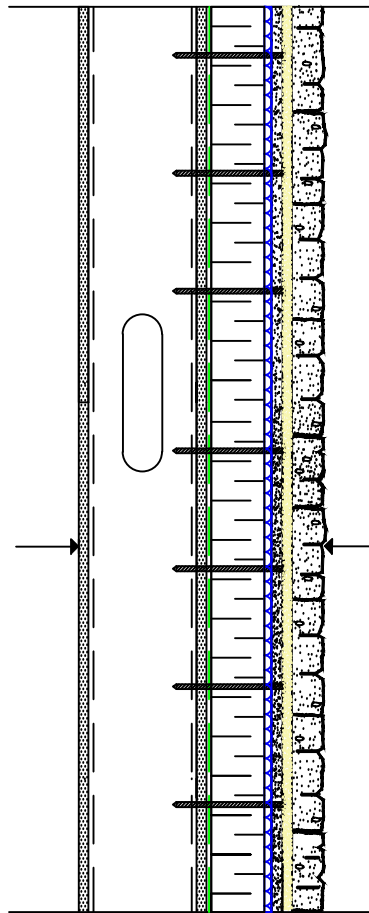


Adhered Stone Veneer on steel stud & thick insulation - Plan

- Drystack Adhered thin stone Veneer Max unit dimensions 10" x 20" x 2"
- Min. 6.4 mm THK. Modified Dry-Set Cement Mortar (ANSI-A118.4 or A118.15 Compliant) Bedding mortar
- Min. 16 mm Exterior Grade Cement board (permabase or equivalent) c/w manf. recommended fasteners and spacing
- 10 mm Drain mat (Keane dri-wall, MTI or equivalent)
- 102 mm (4") MAX Insulation fastened with #16 sheet metal screws @ 152 mm (6") o.c.
- Self-adhered air/vapour barrier membrane
- 16 mm exterior grade sheathing
- 152 mm 16 ga. steel studs at 16" o.c.
- 13 mm Interior Gypsum

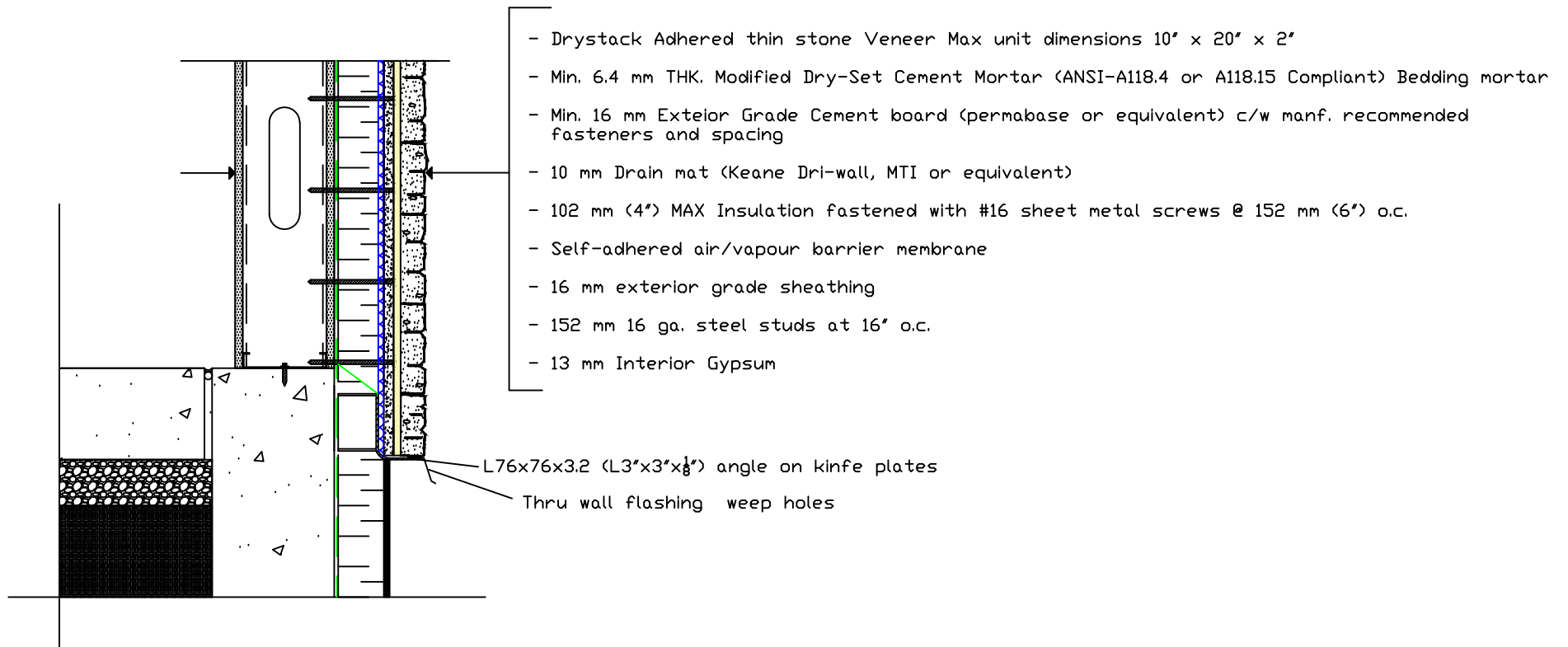


Adhered Stone Veneer On Steel Stud & thick insulation - section

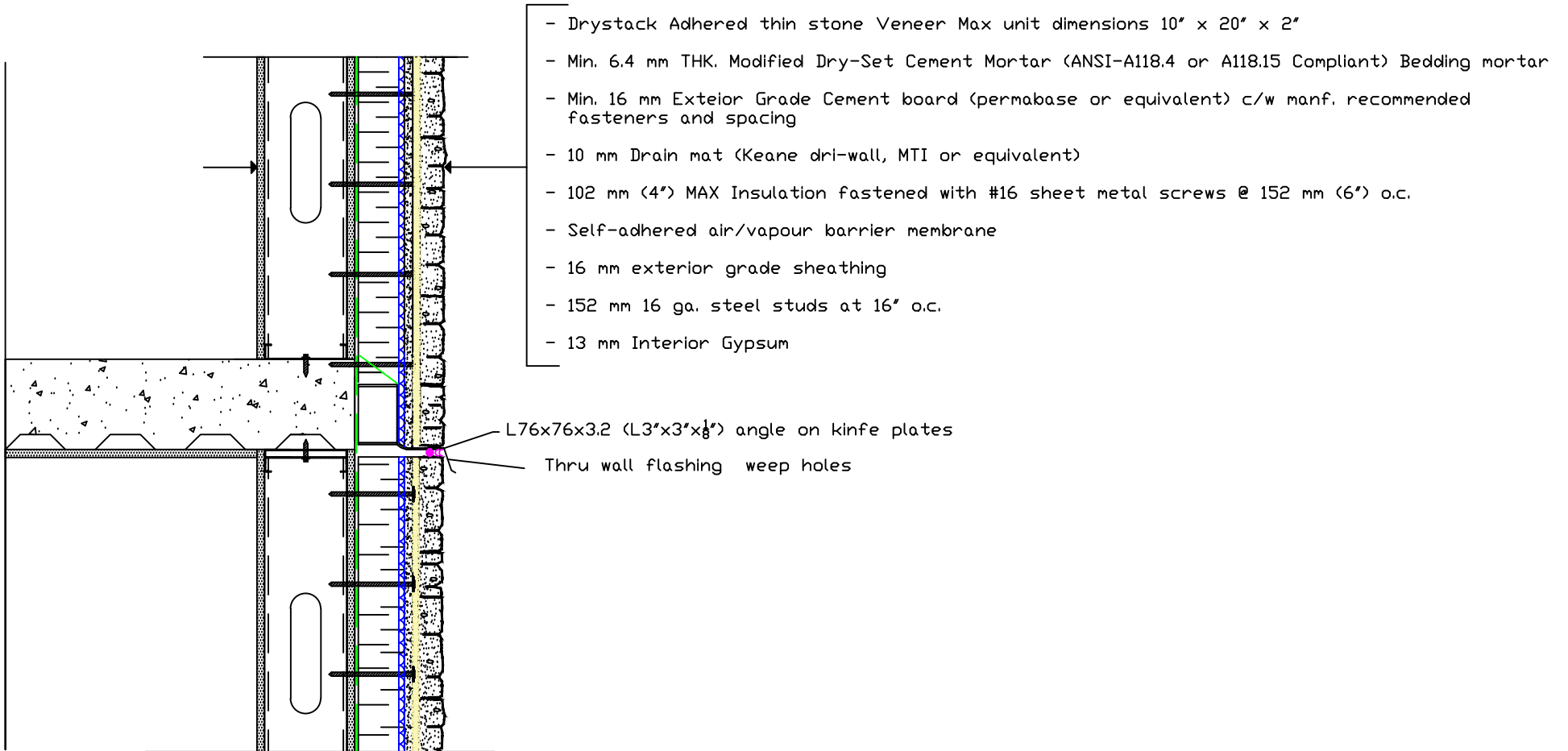


- Drystack Adhered thin stone Veneer Max unit dimensions 10" x 20" x 2"
- Min. 6.4 mm THK. Modified Dry-Set Cement Mortar (ANSI-A118.4 or A118.15 Compliant) Bedding mortar
- Min. 16 mm Exterior Grade Cement board (permabase or equivalent) c/w manf. recommended fasteners and spacing
- 10 mm Drain mat (Keane Dri-wall, MTI or equivalent)
- 102 mm (4") MAX Insulation fastened with #16 sheet metal screws @ 152 mm (6") o.c.
- Self-adhered air/vapour barrier membrane
- 16 mm exterior grade sheathing
- 152 mm 16 ga. steel studs at 16" o.c.
- 13 mm Interior Gypsum

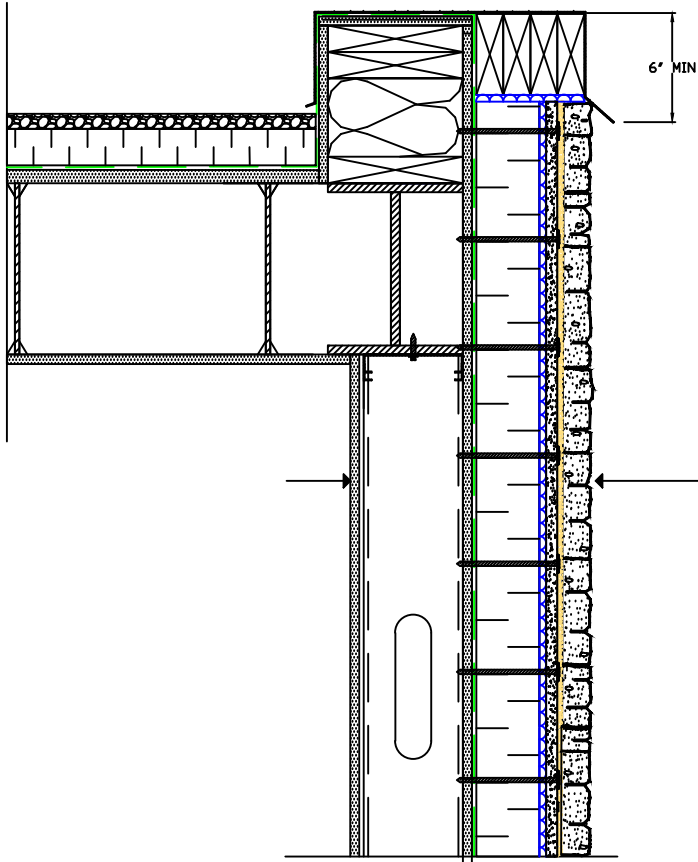
Adhered Stone Veneer on steel stud & thick insulation - Foundation



Adhred Stone Veneer On Steel Stud & thick insulation - floor level



Adhered Stone Veneer on steel stud & thick insulation - parapet



- Drystack Adhered thin stone Veneer Max unit dimensions 10" x 20" x 2"
- Min. 6.4 mm THK. Modified Dry-Set Cement Mortar (ANSI-A118.4 or A118.15 Compliant) Bedding mortar
- Min. 16 mm Exterior Grade Cement board (permabase or equivalent) c/w manf. recommended fasteners and spacing
- 10 mm Drain mat (Keane dri-wall, MTI or equivalent)
- 102 mm (4") MAX Insulation fastened with #16 sheet metal screws @ 152 mm (6") o.c.
- Self-adhered air/vapour barrier membrane
- 16 mm exterior grade sheathing
- 152 mm 16 ga. steel studs at 16" o.c.
- 13 mm Interior Gypsum