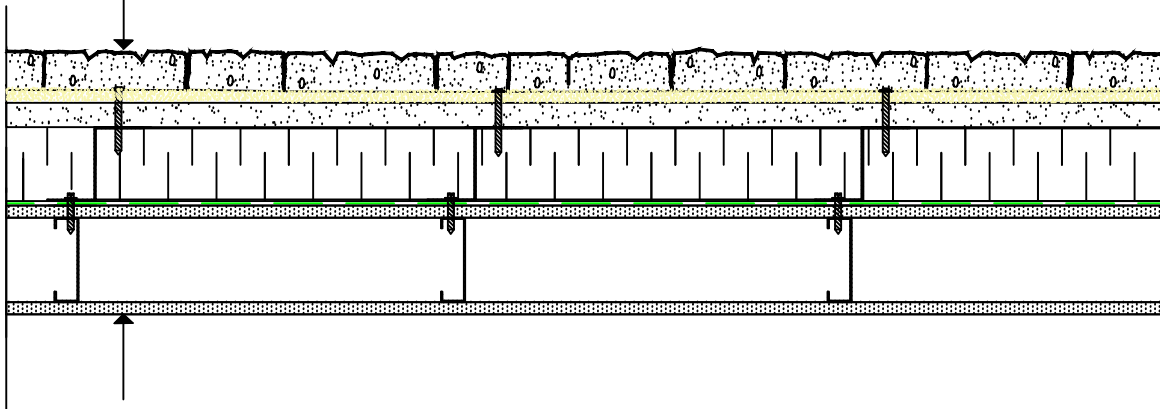
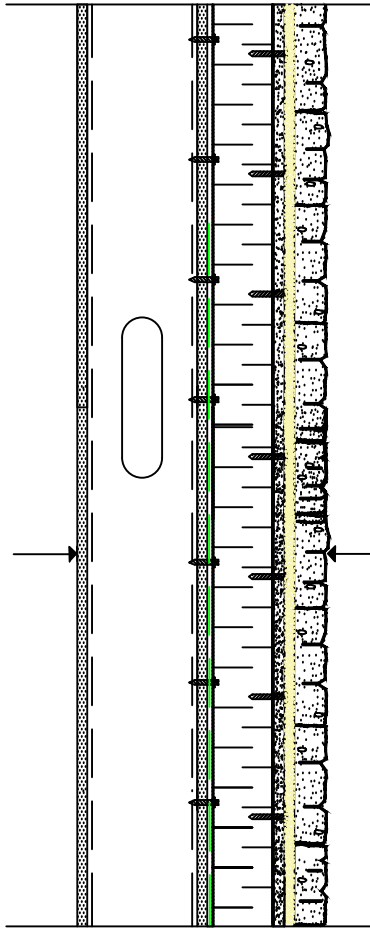


# Adhered Stone Veneer on Z-bar - Plan

- Adhered thin stone Veneer Max unit dimensions 10" x 20" x 2"
- Min. 6.4 mm THK. Modified Dry-Set Cement Mortar (ANSI-A118.4 or A118.15 Compliant) setting bed mortar
- Min. 16 mm Exterior Grade Cement board (permabase or equivalent) c/w manf. recommended fasteners) and spacing by other
- 102 mm (4") MAX Insulation
- 16 ga vertical Z-bars @ 406 (16") o.c
- Self-adhered air/vapour barrier membrane
- 16 mm exterior grade sheathing
- 152 mm 16 ga. steel studs at 16" o.c.
- 13 mm Interior Gypsum



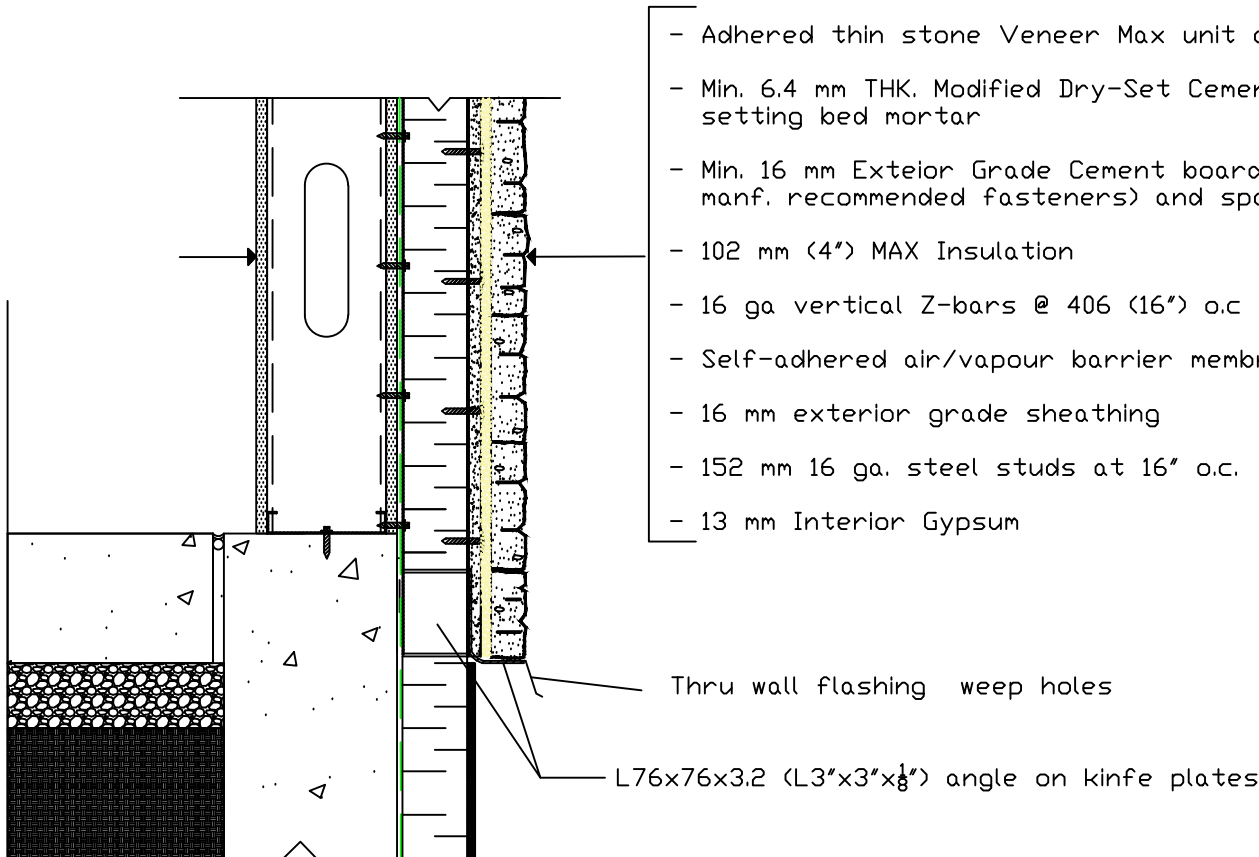
# Adhered stone Veneer On Steel Stud on Z-bar - section



- Adhered thin stone Veneer Max unit dimensions 10" x 20" x 2"
- Min. 6.4 mm THK. Modified Dry-Set Cement Mortar (ANSI-A118.4 or A118.15 Compliant) setting bed mortar
- Min. 16 mm Exterior Grade Cement board (permabase or equivalent) c/w manf. recommended fasteners) and spacing by other
- 102 mm (4") MAX Insulation
- 16 ga vertical Z-bars @ 406 (16") o.c
- Self-adhered air/vapour barrier membrane
- 16 mm exterior grade sheathing
- 152 mm 16 ga. steel studs at 16" o.c.
- 13 mm Interior Gypsum

# Adhered Stone Veneer On Steel Stud on Z-bar

## - Foundation

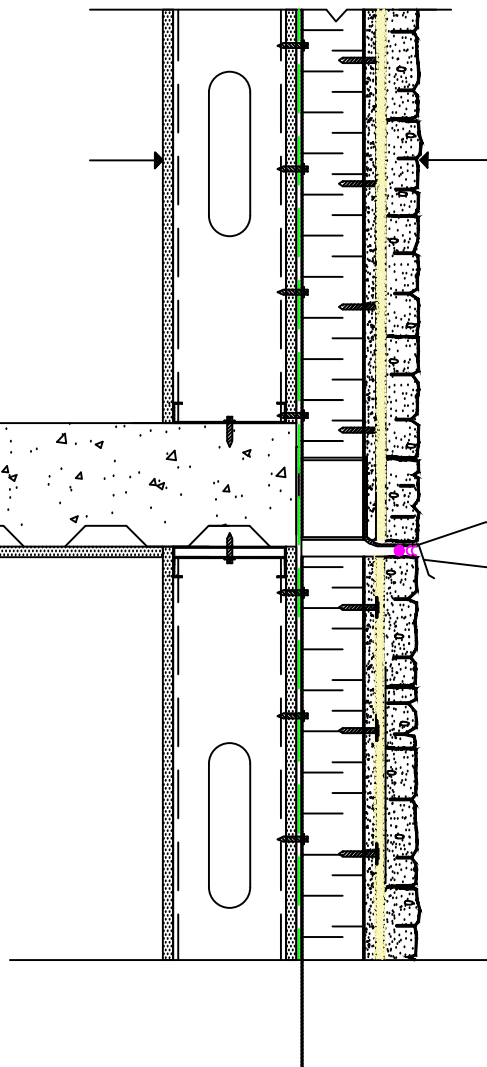


- Adhered thin stone Veneer Max unit dimensions 10" x 20" x 2"
- Min. 6.4 mm THK. Modified Dry-Set Cement Mortar (ANSI-A118.4 or A118.15 Compliant) setting bed mortar
- Min. 16 mm Exterior Grade Cement board (permabase or equivalent) c/w manf. recommended fasteners) and spacing by other
- 102 mm (4") MAX Insulation
- 16 ga vertical Z-bars @ 406 (16") o.c
- Self-adhered air/vapour barrier membrane
- 16 mm exterior grade sheathing
- 152 mm 16 ga. steel studs at 16" o.c.
- 13 mm Interior Gypsum

Thru wall flashing weep holes

L76x76x3.2 (L3"x3"x $\frac{1}{8}$ ") angle on knife plates

# Adhered Stone Veneer On Steel Stud on Z-bar - Floor Level

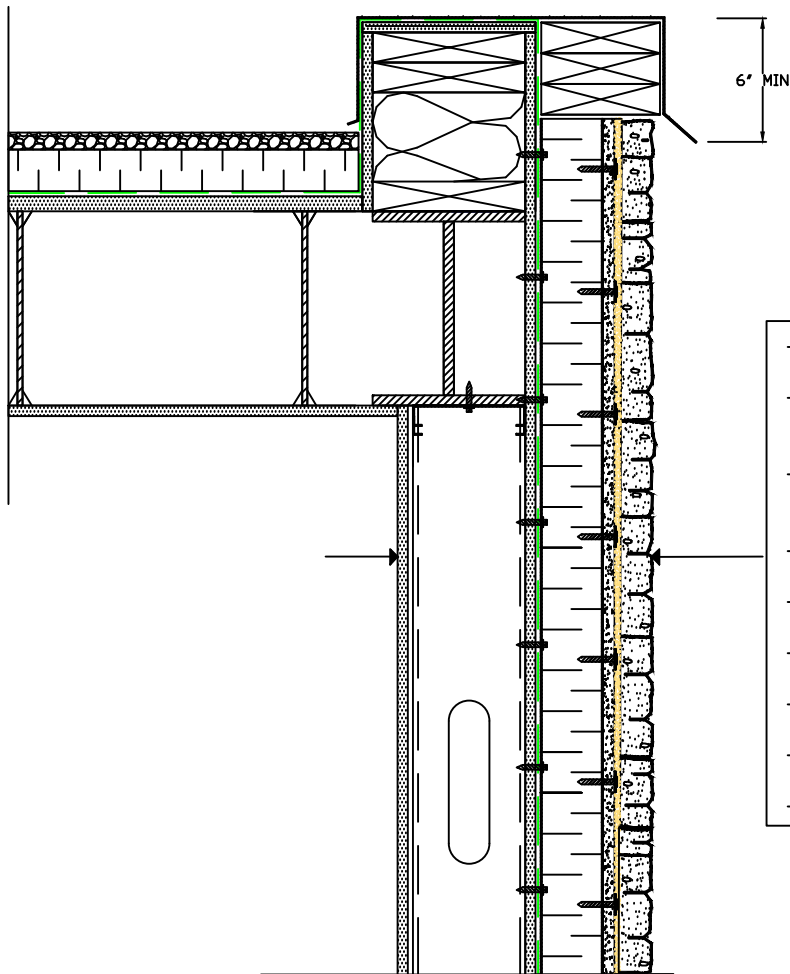


- Adhered thin stone Veneer Max unit dimensions 10" x 20" x 2"
- Min. 6.4 mm THK. Modified Dry-Set Cement Mortar (ANSI-A118.4 or A118.15 Compliant) setting bed mortar
- Min. 16 mm Exterior Grade Cement board (permabase or equivalent) c/w manf. recommended fasteners) and spacing by other
- 102 mm (4") MAX Insulation
- 16 ga vertical Z-bars @ 406 (16") o.c
- Self-adhered air/vapour barrier membrane
- 16 mm exterior grade sheathing
- 152 mm 16 ga. steel studs at 16" o.c.
- 13 mm Interior Gypsum

L76x76x3.2 (L3"x3"x $\frac{1}{8}$ ") angle on knife plates

Thru wall flashing weep holes

Adhered Stone Veneer on steel stud on z-bar  
- Flat Roof



- Adhered thin stone Veneer Max unit dimensions 10" x 20" x 2"
- Min. 6.4 mm THK. Modified Dry-Set Cement Mortar (ANSI-A118.4 or A118.15 Compliant) setting bed mortar
- Min. 16 mm Exterior Grade Cement board (permabase or equivalent) c/w manf. recommended fasteners) and spacing by other
- 102 mm (4") MAX Insulation
- 16 ga vertical Z-bars @ 406 (16") o.c
- Self-adhered air/vapour barrier membrane
- 16 mm exterior grade sheathing
- 152 mm 16 ga. steel studs at 16" o.c.
- 13 mm Interior Gypsum