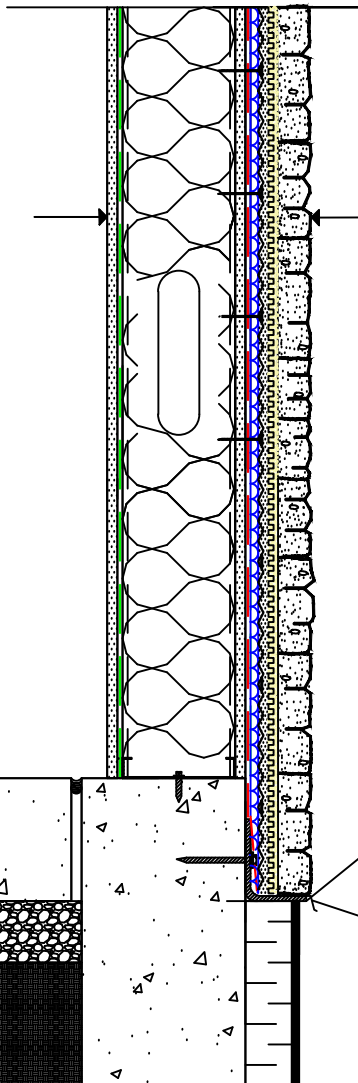


Drystack Adhered Stone on Steel Stud - Foundation



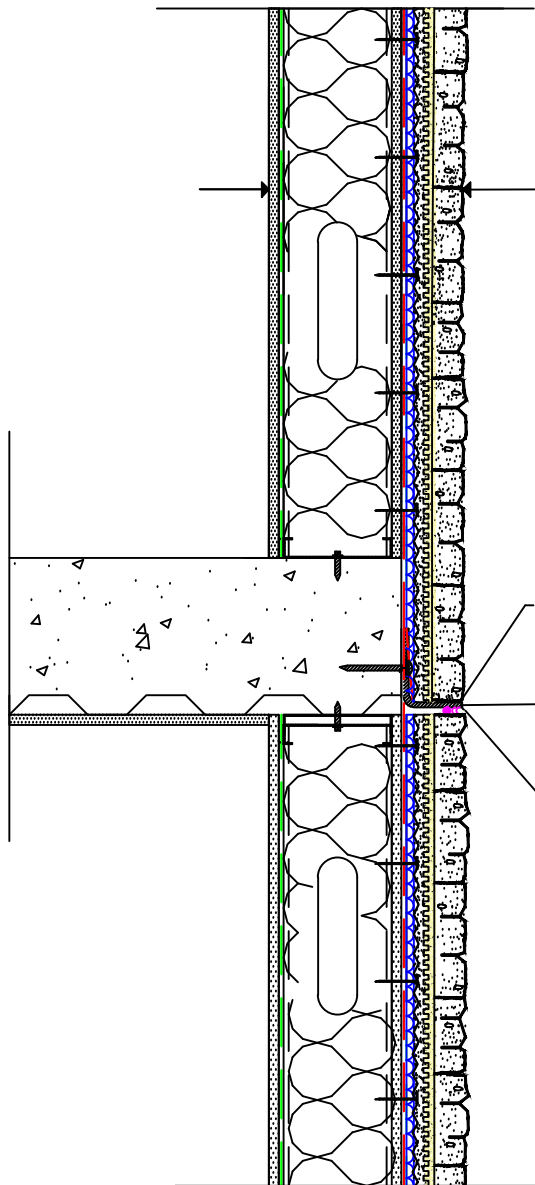
- Drystack Adhered thin stone Veneer Max unit dimensions 10" x 20" x 2"
- Min. 6.4 mm THK. Modified Dry-Set Cement Mortar (ANSI-A118.4 or A118.15 Compliant) Bedding mortar
- Min. 13 mm THK. scratch coat with Pre-bagged Type S Mortar lightly scored with hand broom
- 3.4lb/yd² Galvanized Diamond Wire Self-furring Lath fastened @ 6" o.c. vertically & 16" o.c. horizontally Min embed 1" into stud.
- 10 mm Drainage Mat (Keane-driwall or equivalent)
- Weather Resistant Barrier (WRB)
- 16 mm exterior grade sheathing
- 152 mm 16 ga. steel studs at 16" o.c.
- R20 BATT Insulation
- 6 mil Polyethylene Vapour Barrier
- 13 mm Interior Gypsum

L3" x 2" x 1/8". Angle bolted with $\phi 3/8"$ x 3" Hilti Kwik Bolt 3 @ 16" o.c. OR Tapcon $\phi 1/4"$ x 2-3/4" @ 12" o.c.

Through Wall Flashing with weep holes @ 600 o.c.

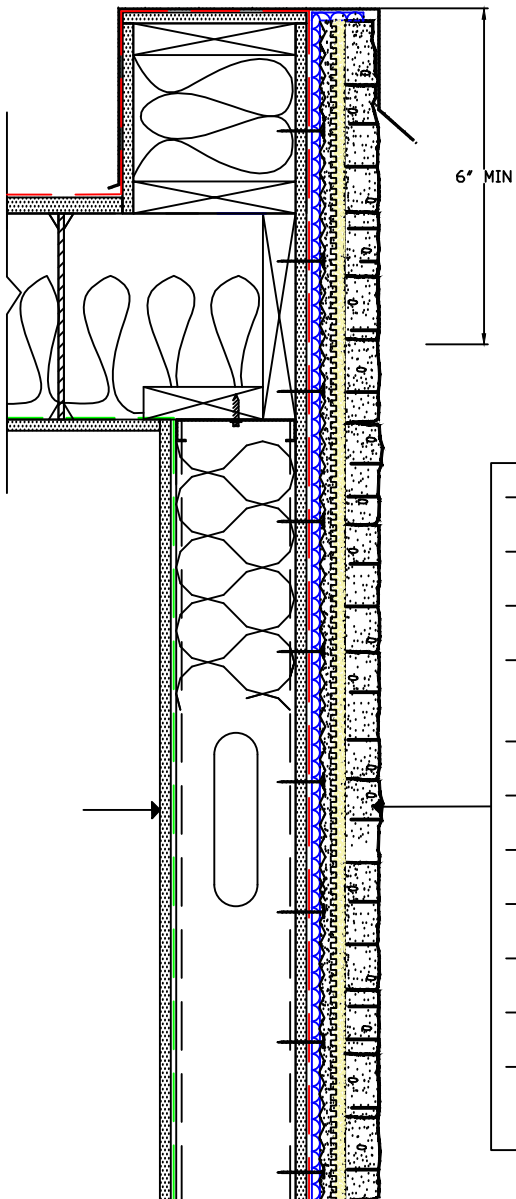
Drystack Adhered Stone on Steel Stud - Floor level

- Drystack Adhered thin stone Veneer Max unit dimensions 10" x 20" x 2"
- Min. 6.4 mm THK. Modified Dry-Set Cement Mortar (ANSI-A118.4 or A118.15 Compliant) Bedding mortar
- Min. 13 mm THK. scratch coat with Pre-bagged Type S Mortar lightly scored with hand broom
- 3.4lb/yd² Galvanized Diamond Wire Self-furring Lath fastened @ 6" o.c. vertically & 16" o.c. horizontally Min embed 1" into stud.
- 10 mm Drainage Mat (keane-driwall or equivalent)
- Weather Resistant Barrier (WRB)
- 16 mm exterior grade sheathing
- 152 mm 16 ga. steel studs at 16" o.c.
- R20 BATT Insulation
- 6 mil Polyethylene Vapour Barrier
- 13 mm Interior Gypsum



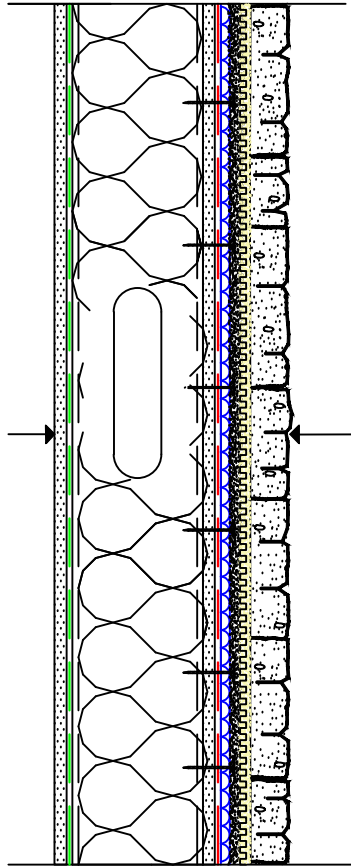
- L3" x 2" x 12ga. Hot dip Galv. Steel Angle bolted 16" o.c. with GRK-RSS Structural screws or equivalent
- Through Wall Flashing with weep holes @600 o.c.
- 1/2" hor. movemnt joint backer rod and caulk

Drystack Adhered Stone on Steel Stud - Flat roof



- Drystack Adhered thin stone Veneer Max unit dimensions 10" x 20" x 2"
- Min. 6.4 mm THK. Modified Dry-Set Cement Mortar (ANSI-A118.4 or A118.15 Compliant) Bedding mortar
- Min. 13 mm THK. scratch coat with Pre-bagged Type S Mortar lightly scored with hand broom
- 3.4lb/yd² Galvanized Diamond Wire Self-furring Lath fastened @ 6" o.c. vertically & 16" o.c. horizontally Min embed 1" into stud.
- 10 mm Drainage Mat (keane-driwall or equivalent)
- Weather Resistant Barrier (WRB)
- 16 mm exterior grade sheathing
- 152 mm 16 ga. steel studs at 16" o.c.
- R20 BATT Insulation
- 6 mil Polyethylene Vapour Barrier
- 13 mm Interior Gypsum

Drystack Adhered Stone Veneer on Steel Stud - Section



- Drystack Adhered thin stone Veneer Max unit dimensions 10" x 20" x 2"
- Min. 6.4 mm THK. Modified Dry-Set Cement Mortar (ANSI-A118.4 or A118.15 Compliant) Bedding mortar
- Min. 13 mm THK. scratch coat with Pre-bagged Type S Mortar lightly scored with hand broom
- 3.4lb/yd² Galvanized Diamond Wire Self-furring Lath fastened @ 6" o.c. vertically & 16" o.c. horizontally Min embed 1" into stud.
- 10 mm Drainage Mat (keane-driwall or equivalent)
- Weather Resistant Barrier (WRB)
- 16 mm exterior grade sheathing
- 152 mm 16 ga. steel studs at 16" o.c.
- R20 BATT Insulation
- 6 mil Polyethylene Vapour Barrier
- 13 mm Interior Gypsum