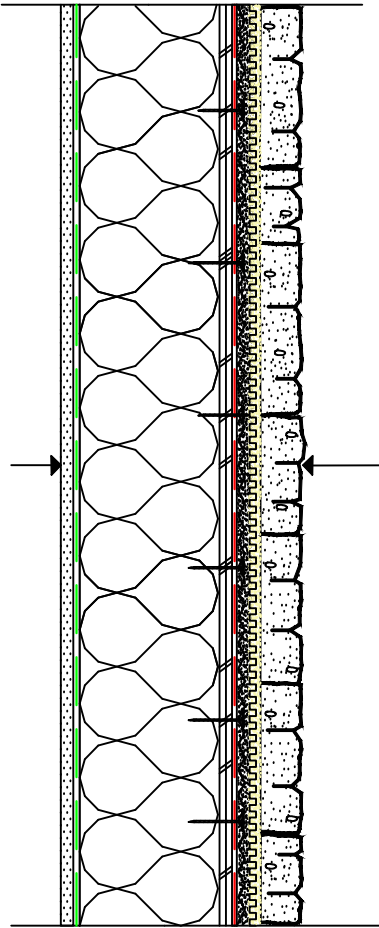


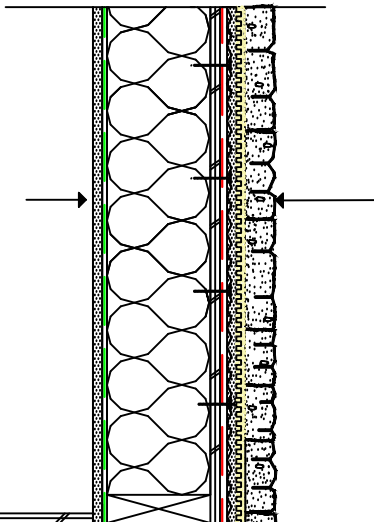
Adhered Masonry Veneer - Typical Wall Cross Section



Where the wall cladding above and/or adjacent to the adhered masonry veneer does NOT employ drainage:

- Adhered thin masonry veneer with AMC approved units
- Min. $\frac{3}{8}$ " (9.5 mm) THK. Setting Bedding mortar with AMC approved setting bed mortar
- Min. $\frac{1}{2}$ " (13 mm) THK. scratch coat with pre-bagged Type S mortar lightly scored with hand broom
- 2.5 lb/yd² Galvanized Diamond Wire Self-furring Lath fastened as per AMC pre-engineered requirements
- Weather Resistant Barrier (WRB) as per AMC pre-engineered requirements
- Exterior grade sheathing as per AMC pre-engineered requirements
- 2x6 wood studs at 16" o.c. or 24" o.c.,
- interior sheathing

Adhered Masonry Veneer - Foundation Detail

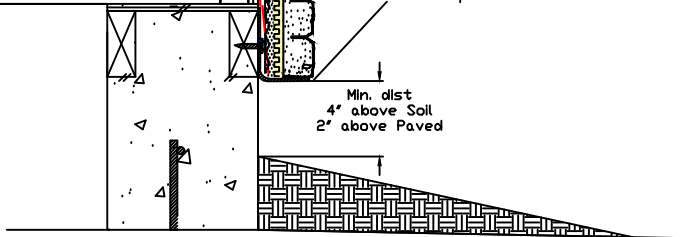


Where the wall cladding above and/or adjacent to the adhered masonry veneer does NOT employ drainage:

- Adhered thin masonry veneer with AMC approved units
- Min. $\frac{3}{8}$ " (9.5 mm) THK. Setting Bedding mortar with AMC approved setting bed mortar
- Min. $\frac{1}{2}$ " (13 mm) THK. scratch coat with pre-bagged Type S mortar lightly scored with hand broom
- 2.5 lb/yd² Galvanized Diamond Wire Self-furring Lath fastened as per AMC pre-engineered requirements
- Weather Resistant Barrier (WRB) as per AMC pre-engineered requirements
- Exterior grade sheathing as per AMC pre-engineered requirements
- 2x6 wood studs at 16" o.c. or 24" o.c.,
- interior sheathing

MTI perforated flashing™ or Drainaway™ perforated flashing

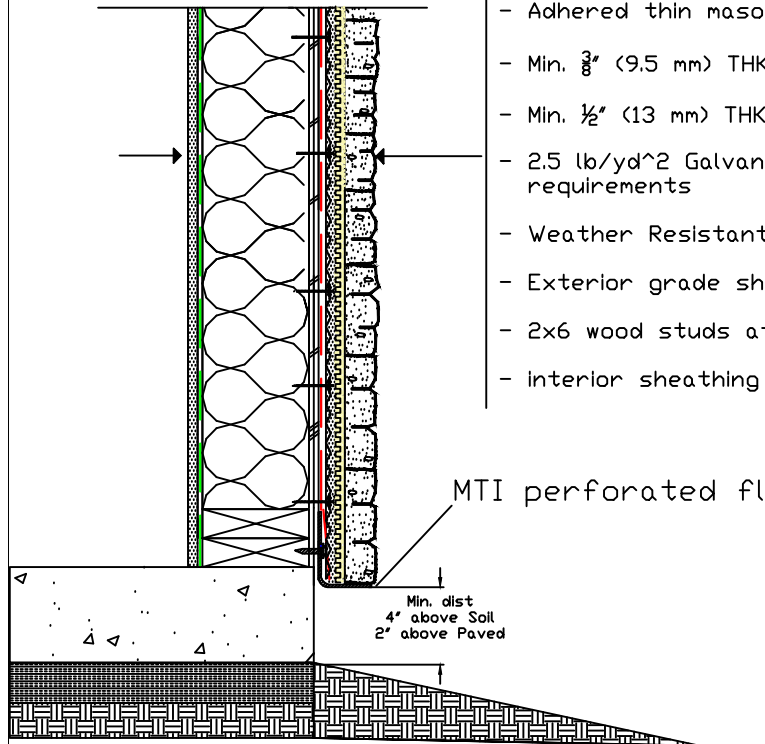
Min. dist
4" above Soil
2" above Paved



Adhered Masonry Veneer - Base of Wall Detail II (Walk-out basement)

Where the wall cladding above and/or adjacent to the adhered masonry veneer does NOT employ drainage:

- Adhered thin masonry veneer with AMC approved units
- Min. $\frac{3}{8}$ " (9.5 mm) THK. Setting Bedding mortar with AMC approved setting bed mortar
- Min. $\frac{1}{2}$ " (13 mm) THK. scratch coat with pre-bagged Type S mortar lightly scored with hand broom
- 2.5 lb/yd² Galvanized Diamond Wire Self-furring Lath fastened as per AMC pre-engineered requirements
- Weather Resistant Barrier (WRB) as per AMC pre-engineered requirements
- Exterior grade sheathing as per AMC pre-engineered requirements
- 2x6 wood studs at 16" o.c. or 24" o.c,
- interior sheathing



Adhered Masonry Veneer – Base of Wall Detail I (Wall on curb)

