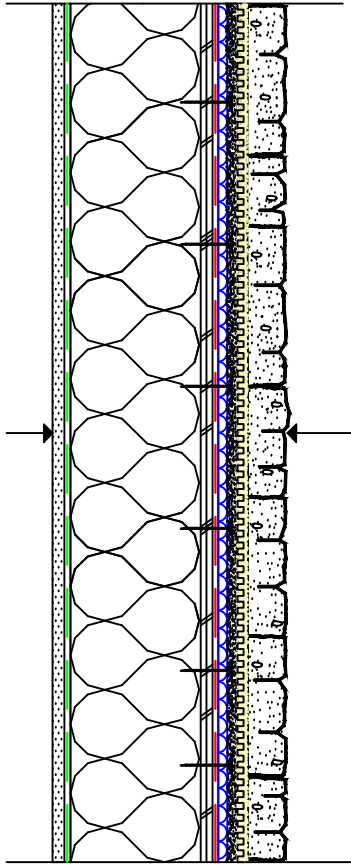


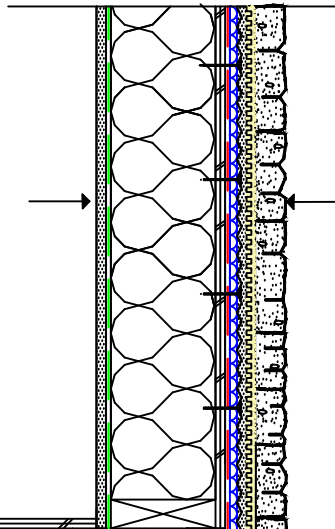
Adhered Masonry Veneer with Drainage - Typical Wall Section



Where the adhered masonry veneer height is to underside of roof of the first storey or when the wall cladding above and/or adjacent employs drainage:

- Adhered thin masonry veneer with AMC approved units
- Min. $\frac{3}{8}$ " (9.5 mm) THK. Setting bedding mortar with AMC approved setting bed mortar
- Min. $\frac{1}{2}$ " (13 mm) THK. scratch coat with pre-bagged Type S mortar lightly scored with hand broom
- 2.5 lb/yd² Galvanized Diamond Wire Self-furring Lath fastened as per AMC pre-engineered requirements
- Min. $\frac{3}{8}$ " (10 mm) THK. drainage mat with AMC approved drainage mat manufacturer
- Weather Resistant Barrier (WRB) as per AMC pre-engineered requirements
- Exterior grade sheathing as per AMC pre-engineered requirements
- 2x6 wood studs at 16" o.c. or 24" o.c.
- interior sheathing

Adhered Masonry Veneer with Drainage- Foundation Detail



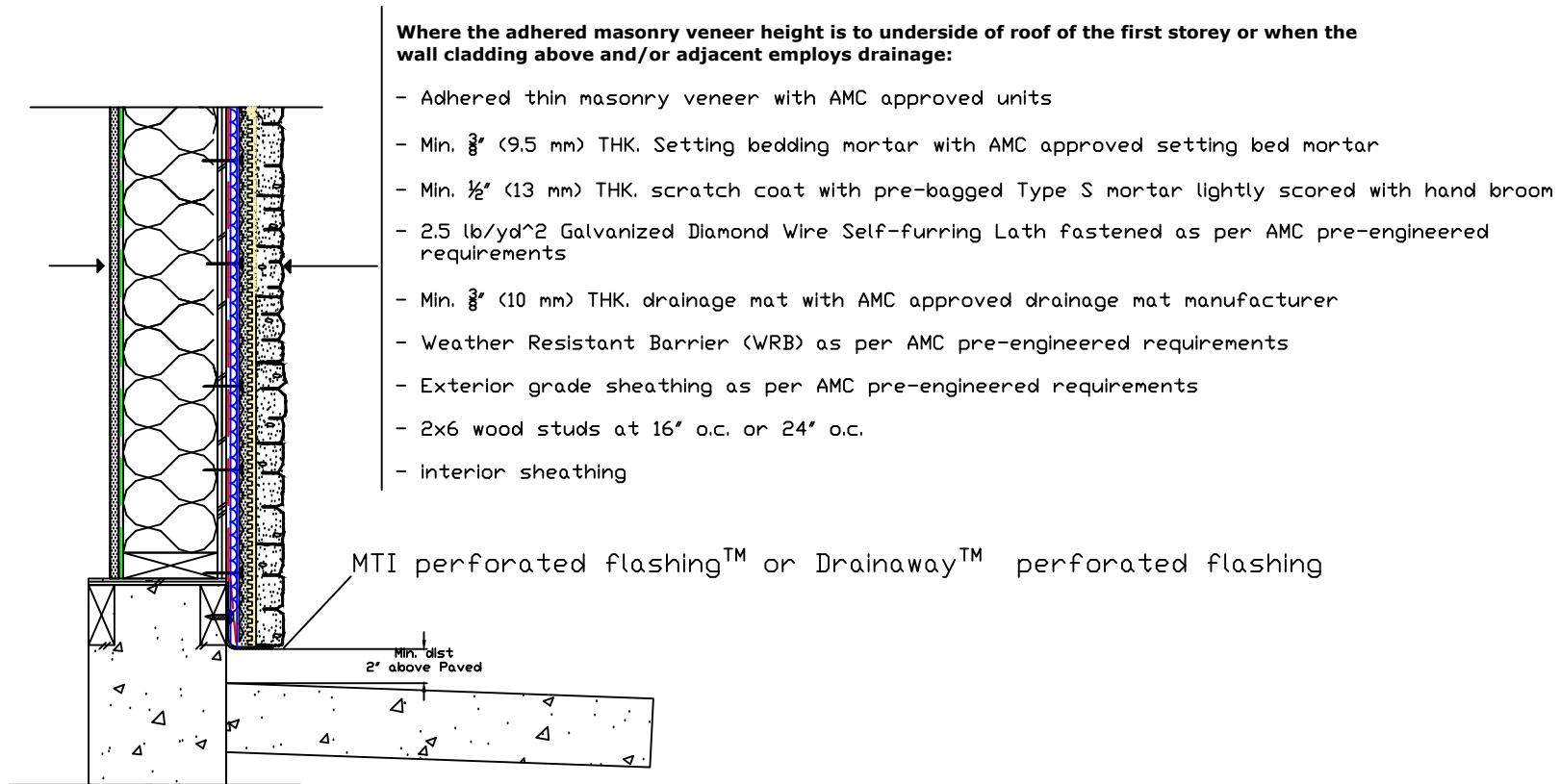
Where the adhered masonry veneer height is to underside of roof of the first storey or when the wall cladding above and/or adjacent employs drainage:

- Adhered thin masonry veneer with AMC approved units
- Min. $\frac{3}{8}$ " (9.5 mm) THK. Setting bedding mortar with AMC approved setting bed mortar
- Min. $\frac{1}{2}$ " (13 mm) THK. scratch coat with pre-bagged Type S mortar lightly scored with hand broom
- 2.5 lb/yd² Galvanized Diamond Wire Self-furring Lath fastened as per AMC pre-engineered requirements
- Min. $\frac{3}{8}$ " (10 mm) THK. drainage mat with AMC approved drainage mat manufacturer
- Weather Resistant Barrier (WRB) as per AMC pre-engineered requirements
- Exterior grade sheathing as per AMC pre-engineered requirements
- 2x6 wood studs at 16" o.c. or 24" o.c.
- interior sheathing

MTI perforated flashingTM or DrainawayTM perforated flashing

Min. dist
4" above Soil
2" above Paved

Adhered Masonry Veneer with Drainage - Base of Wall Detail I (Wall on Curb)



Adhered Masonry Veneer with Drainage - Base of Wall Detail II (Walk-out basement)

Where the adhered masonry veneer height is to underside of roof of the first storey or when the wall cladding above and/or adjacent employs drainage:

- Adhered thin masonry veneer with AMC approved units
- Min. $\frac{3}{8}$ " (9.5 mm) THK. Setting bedding mortar with AMC approved setting bed mortar
- Min. $\frac{1}{2}$ " (13 mm) THK. scratch coat with pre-bagged Type S mortar lightly scored with hand broom
- 2.5 lb/yd² Galvanized Diamond Wire Self-furring Lath fastened as per AMC pre-engineered requirements
- Min. $\frac{3}{8}$ " (10 mm) THK. drainage mat with AMC approved drainage mat manufacturer
- Weather Resistant Barrier (WRB) as per AMC pre-engineered requirements
- Exterior grade sheathing as per AMC pre-engineered requirements
- 2x6 wood studs at 16" o.c. or 24" o.c.
- interior sheathing

MTI perforated flashingTM or DrainawayTM perforated flashing

Min. dist
4" above Soil
2" above Paved

