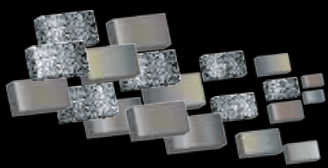


MASONRY

2015 Alberta Masonry Design Awards



2015 ALBERTA
MASONRY
DESIGN
AWARDS



CELEBRATING
ARCHITECTURE
IN MASONRY

Beautiful...

...but dangerous.

It's the proverbial tip of the iceberg. Awesome...but awfully deceptive.

The same might apply to your residence. Behind the fine millwork and decorator finishes of your buildings, you could be facing risks such as mold, insects, wind damage and — perhaps most life-threatening — fire.

A structure built with concrete block can greatly reduce these risks. Block resists moisture and mold. It cannot be destroyed by insects. It's often the only thing still standing when severe weather has damaged surrounding property.

And in industry-standard fire tests involving temperatures of over 1000°C, only block is left standing and structurally intact.

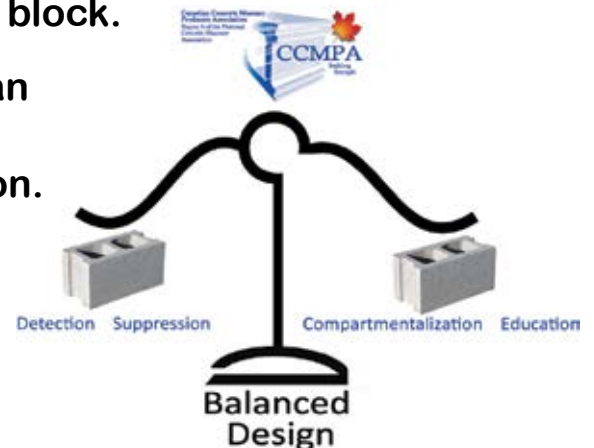
Your residence is a big investment. Make sure it's built as good as it looks.

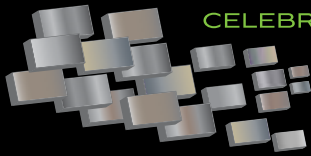
**Learn more about the benefits and safety
of building with concrete block.**

**Contact the Canadian
Concrete Masonry
Producers Association.**

www.ccmppa.ca
info@ccmpa.ca
1-888-495-7497

Canadian Concrete Masonry
Producers Association
Region 6 of the National
Concrete Masonry
Association





ACKNOWLEDGEMENTS

Planning Committee Members

Bob Driedger	Brock White Canada
Shane Frahm	Bond Masonry Ltd.
Dr. Mark Hagel	Alberta Masonry Council
Ken Hansen	K.Hansen Masonry Ltd.
Malcolm Holbrook	Pockar Masonry Ltd.
Mike Lafontaine	Expocrete Concrete Products Ltd.
Fraser Powell	Cast Supply Inc.
Conrad Tycholaz	Westar Masonry Ltd.
Fred Woodlock	Lafarge Canada Inc.

Judges

Dr. Tang Lee	University of Calgary
Kees Prins	Maltby and Prins Architects
Dave Stubbs	Canada Masonry Design Centre

Professional Services

Impact Events Ltd. Event Management
By Design Desktop Publishing Inc. Magazine Design & Graphics
Talbot Marketing Award Plaques

TABLE OF CONTENTS

Chairman’s Message	2
Executive Director’s Message	2

FEATURE ARTICLES

The Legacy of the Ledge	24
The Legacy of Unforgettable Masonry	40
Masonry of the Future	52

MASONRY DESIGN AWARDS 2015

The AMC Presidential Award	3
Artistic Use of Masonry	4
Commercial Building	12
Educational/Institutional	30
Multi Family Residential	44
Restoration	48
Single Family Residential	55
Structural Masonry Design	63
Thin Masonry Veneer – Commercial	65
Thin Masonry Veneer – Residential	68

ON THE COVER:

ROYAL CANADIAN PACIFIC RAILWAY PAVILION
2011 Alberta Masonry Design Awards Presidential Winner

The inspiration for the Royal Canadian Pacific Entry Pavilion is the image of an historic steel trestle bridge. The trestle sets up the primary public space – the grand foyer or Galleria - which links directly to the existing Royal Canadian Pacific train pavilion. A three-storey wall of cable and spider fitting glass faces the Palliser Hotel and fills the Galleria with natural light. The full height interior west wall features large module limestone masonry, as does the exterior cladding at both the front entrance and building base along 1st Street S.W. In addition to being

a durable and highly attractive building material, the use of limestone masonry is consistent with the existing train pavilion and is sympathetic to the adjacent historic sandstone clad Palliser Hotel and neighbouring Grain Exchange building. Other materials include black plate steel and glass. The facility embraces the history and contemporary values of the current day Canadian Pacific company. Oversized heavy steel members emulate the traditional trestle bridge and the large module limestone masonry reflects the heavy nature of the Rocky Mountains.





Welcome and thank you for your support of the 2015 Alberta Masonry Design Awards. It is incredible that another 4 years have gone by since our previous event. The biggest change you will notice from our last event is the 2015 awards are organized by the Alberta Masonry Council (AMC). The AMC was formed in 2011 by the north and south tables of the Masonry Contractors Association of Alberta (MCAA) to promote masonry and masonry systems in Alberta. The AMC is lead by our executive director Dr. Mark Hagel who reports to our board which is a collection of contractor and supplier volunteers. The board operates independently and reports back to the MCAA in pursuit of our common goal of ensuring health and growth of the masonry industry. Our funding is secured through a levy collected on behalf of the AMC by our supplier members on masonry products sold in Alberta. As chair of the 2015 Alberta Masonry Design Awards and current Chair of the AMC, I am proud to welcome you to the 2015 Alberta Masonry Design Awards.

It has been my pleasure to work with our design awards committee who have dedicated a great deal of time and effort over the past 3 years to ensure the success of this event. Thanks also to the judges who had the difficult task of selecting the best projects from an impressive list of submissions. The number of entries in 2015 surpassed our previous record and the quality and

innovation of the project submissions are a testament to the creativity of the architecture, design and masonry contractor communities.

The Alberta Masonry Council appreciates your continued support of the masonry industry in Alberta and the skilled trades' people who bring your designs to life. Keep designing and specifying masonry. I look forward to seeing the next round of beautiful projects in 2019.

Fraser Powell

Chair – 2015 Alberta Masonry Design Awards
Chair – Alberta Masonry Council

THE ALBERTA MASONRY COUNCIL – EXECUTIVE DIRECTOR'S MESSAGE



The Alberta Masonry Council (AMC) would like to thank you for your support of the 2015 Masonry Design Awards. AMC was incorporated September of 2011 as a not-for-profit association by the supplier and installer members of the Masonry Contractors Association of Alberta (MCAA) to promote the use of masonry products in Alberta. The vision of the AMC is to provide education, technical guidance and marketing to increase the awareness of the benefits of masonry, as well

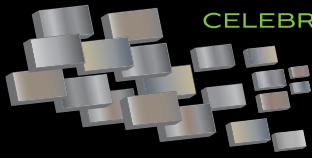
as promote the use of masonry and masonry products in Alberta. One way this is achieved is through events such as the Masonry Design Awards which recognizes the architects, engineers and designers who design with masonry products and the skilled craftsmen and suppliers who ensure these designs are realized. We thank you for your creativity and ingenuity!

Masonry has been used for thousands of years but that does not mean it can't be used in new and exciting ways. Modern masonry has proven to be sustainable, green, carbon footprint reducing, energy efficient and adaptable. Architecture that utilizes masonry requires a great deal more skill than other materials in both design and construction. The end product is worth your efforts and imparts the timeless architecture that has impressed generations around the globe for centuries.

A heartfelt thanks to you - the architects, engineers, designers, masons, and suppliers of masonry products in Alberta for your continued support of this amazingly versatile building material! These awards acknowledge your hard work and dedication to the art and craft of masonry!

Mark Hagel

Executive Director
Alberta Masonry Council



THE AMC PRESIDENTIAL AWARD

ALBERTA HOTEL



Owner: Five Oaks Inc.
 Architect: Dub Architects Ltd.
 General Contractor: TC Biggs
 Construction Ltd.
 Masonry Contractor: Remo's Masonry
 Masonry Supplier: I-XL Masonry Supplies
 Engineer: Protostatix Engineering
 Consultants Inc.



The Alberta Hotel, built in 1903, but demolished in 1984 to make way for the construction of Canada Place. The original bricks and sandstone from the hotel were marked with painted numbers then tagged for reassembly. Bricks and sandstone from the nearby Rothesay Apartments was also salvaged and stored for 25 years. In 2009, Five Oaks Inc. and Dub Architects proposed to reconstruct the Alberta Hotel and the Rothesay facades approximately twenty feet west of the original hotel location.

Reconstruction of the masonry was a difficult task as most of the numbers tagging the sandstone pieces had fallen off over time. Also, the sandstone had been stored on flat rather than on edge and water erosion had destroyed some of the stone faces. To solve the problem, all stone was laid out and puzzled together on the floor of a large rented warehouse. Grout colour and

joint treatment required experimentation so that the original character was achieved. Initials and names carved into the stone over time were carefully protected and retained. The eastern half of the facade along Jasper Avenue was faithfully reconstructed using new brick similar in colour to the original brick. The original cantilevered brick cornice at the top of this portion of the brick façade was studied and accurately reproduced. The original demolished building had wood-frame construction with small spaces on a mixture of levels. The new building was steel frame construction with clear span spaces.

The developer hopes the project will spark further redevelopment of the historic masonry buildings on the block to the east, built at approximately the same time as the hotel. These masonry buildings make up an historic district that demonstrates the beauty and intimacy of masonry.

AWARD OF EXCELLENCE



ST. MARY'S PARISH

Owner:	St. Mary's Parish
Architect:	The LeBlond Partnership
General Contractor:	Golden Triangle Construction
Masonry Contractor:	Pockar Masonry Ltd.
Masonry Supplier:	I-XL Masonry Supplies
Engineer:	Williams Engineering

St. Mary's Parish is a Catholic Church located in Cochrane, Alberta and was conceived in two phases. The first phase was completed in 2006, and includes the Entry, Gathering Space, Day Chapel, Church Hall, and Administration areas. The Hall was developed with the intention of using the area as the Worship Space while funding for the second phase is established.

Masonry was the natural choice for St. Mary's Parish, representing the structure's longevity in the community. The formal entrance marries the layered brick arch and bell tower into one entity of resounding permanence.

Even with the established formality of the main entrance it was important to impress upon visitors a sense of warmth and welcome. This was achieved with the layered masonry archway, which creates protective depth as you enter the church, and the colour selection of the masonry. The entrance is constructed of brick masonry that is notably lighter and smaller in scale than that of the flanking Day Chapel and administration wing. These choices were made to give visitors an uplifting and bright reception.

AWARD OF MERIT

RUNDLESTONE VILLA

Architect: Marshall Tittemore Architects
 General Contractor: Sterling Construction Services
 Masonry Contractor: Apex Stoneworks
 Masonry Supplier: Rundle Rock Building Stone
 Engineer: ISL Engineering
 Stone Harvesters: Rundle Rock Building Stone



The Rundlestone Villa has incorporated an indigenous building stone discovered in the Bow Valley over 100 years ago. Overtime, masons working with this stone have discovered its vast versatility and enduring properties, all of which have been brilliantly exhibited within this outstanding and inviting 12,000 square foot estate villa.

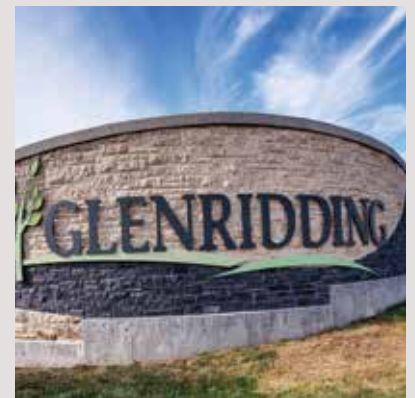
The massive dry stacked full bed veneer

Rundlestone walls of the exterior are carried into the home where the same masonry and stone style become statuette pillars standing at attention and aligning the great hallways which extend the full length of this estate. The blend of warm earthy-brown tones which this rock is famous for were chosen as these stone colours blend well with the wood used throughout the home and the surrounding mountains and forests.

HONOURABLE MENTION

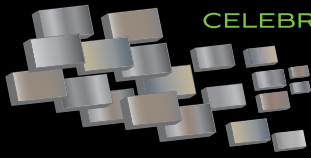
GLENRIDDING ENTRANCE FEATURES

Owner: Windermere Communities Inc.
 Architect: IBI Group
 Masonry Contractor: Scorpio Masonry (Northern) Inc.
 Masonry Supplier: Brock White



The curving form was inspired by the rolling hills surrounding Glenridding, England and was used in plan view, elevation and the stone veneer. Rundle

and tyndall stone were selected to provide a visual contrast to create the curving form on the face of the wall.



ARTISTIC USE OF MASONRY



**108 STREET CAPITAL BOULEVARD
STREETScape**

Owner: The City of Edmonton
Architect: Urban Design Group Architects Ltd.
General Contractor: Standard General Inc.
Masonry Contractor: Brxton Construction LP
Masonry Supplier: Brock White

This project consisted of 82 street light bases with 25 - 90mm thick custom cut pieces each and 8 traffic lights slightly larger in size with 25 - 90mm thick pieces each as well all hung from steel frames and laid in mortar. There were 13 benches with 2-3 150mm thick tyndall caps placed on each precast bench as well as 5 sets of planters with D patterns and circles with the same 150mm this custom pieces.

ACHESON FIRE HALL

Owner: Town of Stony Plain
Architect: S2 Architecture
General Contractor: Delnor Construction
Masonry Contractor: K.Hansen Masonry
Masonry Supplier: Expocrete Concrete Products Ltd.

This is a 6-bay responding fire station, training centre, headquarters, and back-up EOC for the Parkland County. The department has paid on- calls, volunteers and full time firefighters. The station is designed to suit the industrial location of Acheson and be suitable for a public building with a civic presence. Masonry was used to evoke the solidity and stability of the County while providing exceptional durability. The warm colour was used to bring

warmth to the public face of the facility and the gridded pattern was used to visually break up the mass of the building facades.

The building is designed as an Emergency Crisis Management Centre and as such is also designed to accommodate the public in time of crisis and therefore a stable, civic, warm building was seen as an appropriate image to convey to the citizens of Parkland County during a crisis.



CHERNOFF RESIDENCE

Architect: Chernoff Architect Inc.
General Contractor: Nadezda Developments Inc.
Masonry Contractor: Pockar Masonry Ltd.
Masonry Supplier: Arriscraft
Engineer: KTA Structural Engineers

This lake side home was designed as a timeless retreat from busy city life.

The home was organized in such a way to take full advantage of the lake on which it borders, by orienting each room to have a view of the lake.

Masonry was a large proponent of the design. Planes

of stone walls were collided on the majority of the front facade, presenting the public view with a rich and playful interaction of stone, glass, wood and steel. The Adair Limestone was chosen for its durability, richness and depth of gentle colour, as a way of easing the maintenance on the exterior, and creating softness on the interior. The timeless quality of the stone, combining the other surface materials with impeccable craftsmanship creates a project of luxurious appeal.

The stone used on the project extends around the entire building using thin stone material on the fascias, full bed on patios and stone walls which pull through into the interior of the home.

FIREPLACE MATCO'S RANCH

General Contractor: Gord White
Masonry Contractor: Gord White
Masonry Supplier: Gord White

Originally the owner wanted a fireplace facing that was built using stone from his ranch property. This was discussed with an installer who informed him there was no suitable stone on his Ranch property to use but not to worry because he had a very suitable stone and to leave it up to him. The client was not satisfied with the results. He heard through a contact that I work mainly with local stone. I jumped at the opportunity and re-did the facade facing in full bed using stone taken from the hill right beside his cabin on the Ranch property. The original hearth

was not removed. The client was so happy with the final results he is now planning to build a new house on the Ranch so he can have a large all masonry ranch ford style stone fireplace and his own stone on the ranch house.





GREEN RESIDENCE FIREPLACE AND ENTRY

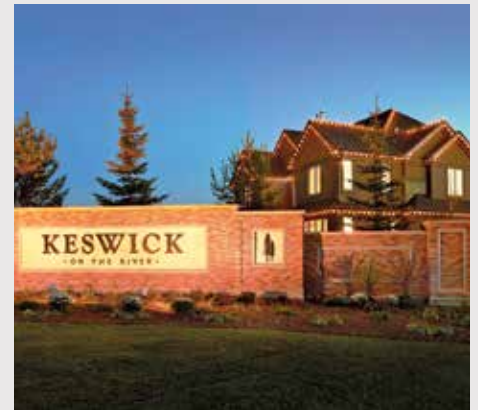
Architect: PMO Group
 General Contractor: PMO Group
 Masonry Supplier: Alomar Masonry Supplies,
 H.O. Concrete Products

Stone and masonry was used because of the rugged and rustic mountain settings and will last for generations.

KESWICK ON THE RIVER

Owner: Keswick Developments Ltd.
 Masonry Contractor: G&M Stone Masonry Ltd.
 Consultant: Stantec Consulting Ltd.

The inspiration for Keswick on the River came from a desire to create a neighbourhood with an estate like feel through the use of timeless materials. Stantec Consulting Ltd. was commissioned by Keswick Developments Ltd. for the design of the upscale neighbourhood and establishment of the masonry features and walls. Stantec collaborated with G&M Stone Masonry Ltd. on the material selection and details to compliment the vision.



KNAUT / SILVER GARDEN ROOM FIREPLACE

Owner: Gord White
 Masonry Contractor: Gord White
 Masonry Supplier: Gord White (Sandstone);
 Thunderstone Quarries (Rundlestone)

When we added a garden room to our home we wanted a fireplace with some flair. We had seen Gord White's work on other projects and wanted him to do the work for us. We wanted the fireplace to actually heat the room, so we had him first build a Rumford fire box, which has proved to be very effective. We had Gord use two types of

stone - contrasting the soft pastel of our local Paskapoo Sandstone with the darker tones of Rundlestone. Another unique feature of the fireplace is in the hearth. At its centre is a riverstone that was highly polished by Gord, thereby reflecting the flames of the fire into the room. For the mantel Gord found the perfect piece of Sandstone that works perfectly, drawing the eye across the width of the fireplace. Gord clad the whole chimney with the Sandstone and Rundle mix so we can also see his beautiful workmanship through our sky lights. The finishing touch was a ½ ton Sandstone piece to cap the chimney, Gord's signature. I'm sure the neighbours thought we were crazy the day the crane placed the final piece!

KOWALCHUK RESIDENCE

Owner: Fiddlerock Masonry
 Masonry Contractor: Fiddlerock Masonry
 Masonry Supplier: Brock White

The residence was built in 1977. The original exterior was aluminum siding and stucco. Reclaimed brick had been added to the front exterior in the late 70s'. The residence was built with 2x4 walls allowing only R12 insulation.

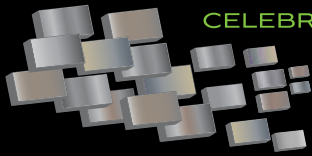
It was decided to completely tear off the existing brick facade and the stucco and aluminum siding around the house.

The owner is a masonry contractor and made the decision

to incorporate and show the many benefits that masonry can bring to a new or older homes. Big gains and savings can be made with upgraded vapour barriers and increased R-values. Aesthetically pleasing veneer detail work and lighting effects enhance the veneer and put brick in the best light possible.

Another reason for the care and attention to the work described is that this is the easiest way to have potential clients visit a turnkey masonry enhancement project. The home showcases the beauty of brick and what can be incorporated behind it, all of which will increase the resale value of the home while saving heating costs.





LDS CHURCH

Owner: LDS
 Architect: GDG Architectural Group
 General Contractor: Westcor Construction Ltd.
 Masonry Contractor: Brxton Construction LP
 Masonry Supplier: I-XL Masonry Supplies

This LDS Church located in Airdrie had special shaped Brick wrapped around the exterior doors and windows. The Architect designed the brick around these openings to resemble picture frames. Quoins, arches & oversized cants (at the base) were used which added esthetically pleasing architectural details into the design of this project.

LEGACY

General Contractor: D. Floyd Construction Ltd.
 Masonry Contractor: Rushing River Masonry
 Masonry Supplier: Montana Rockworks

Legacy's theme is that of timeless charm and lasting quality. Images of an 'old world courtyard' served as the underlying inspiration for the community's landscape architectural flavour.

Carefully placed, artfully designed architectural monuments highlight Legacy's ageless quality and help establish a strong & unique sense of place. The use of natural masonry materials applied with care and attention to detail further enhance the richness of Legacy's character.



MARTUSHEV RESIDENCE

Masonry Contractor: Boulder Construction Group Ltd.
 Masonry Supplier: Kodiak Mountain Stone

Boulder Construction Group installed a large amount of manufactured stone on Kenny Martushev's previous home, and when Kenny built his new home, he wanted much more stone inside the home as well as the exterior. He also wanted an artistic use of stone inside the home, with 2 fireplaces and arches. There was lighting incorporated into the arches, and railings attached to the stone pillars.

NUERA TOWER PHASE 1

Owner: Cove Properties Ltd.
 Architect: S2 Architecture
 General Contractor: Cove Properties Ltd.
 Masonry Contractor: Brxton Construction LP
 Masonry Supplier: Brock White
 Supplier: I-XL Masonry Supplies

This project has a two storey facade which consisted of red Saxon brick, along with 15,000 square feet of Splitface and smooth-faced Tyndall stone. There is also interior block work on four parkade levels and the main floor. The exterior consisted of 68,000 concrete masonry units.





PRIDDIS RESIDENCE

Architect: Lighthouse Studio
General Contractor: Cana Management Ltd.
Masonry Contractor: Pockar Masonry Ltd.
Masonry Supplier: Brock White
Interior Design: Louise Middleton/Jacqui McFarland
Landscape Architect: Paterson Design Group Inc.

This classic timber frame home was given a sense of elegance and grace reminiscent of traditional European country houses. This is most evident in the main living room fireplace, where the masonry is designed to reflect an 'old world' feel. The result is a rustic yet elegant composition of sandstone, metal and wood. The Rumsford infrastructure is

clad with rough cleft Cleveland sandstone. The opening is detailed with hand carved sandstone medallions and metal strapping. The hearth is a vein cut Cleveland sandstone slab.

Masonry was also used to unify the complex exterior site design, complementing the architecture of the residence. Masonry materials were selected based on the function, aesthetic character, colour and durability. Big Horn Ledge stone was used as the main masonry component and although the same material as the residence, it is used in a more natural pattern without exposed mortar joints providing its own unique character. Used in combination with Flagstone in the outdoor kitchen, sandstone caps on the columns and Adair stone on the stairs and counters, the overall appearance is one of permanence and rugged sophistication.

RED DEER COLLEGE ARTS CENTRE BARREL VAULT

Owner: Red Deer College
Architect: Group2 Architecture Interior Design Ltd.
Masonry Contractor: Scorpio Masonry (Northern) Inc.

The Barrel Vault at Red Deer College is one of the main architectural features of the entire campus. The original building is an Arthur Erickson design. The barrel vault was experiencing water leakage coming into the structure. The design intent was to incorporate a drainage plane behind the brick on top of the existing precast planking. The brick was removed, a new membrane installed, insulation with a drainage profile and a stainless mesh was incorporated into the cavity.



SACRED HEART CHURCH

Owner: Sacred Heart Church
Architect: Ron Boruk Architect Ltd.
General Contractor: Pentagon Structures Ltd.
Masonry Contractor: Majestic Masonry Ltd.
Masonry Supplier: Alomar Brick & Stone
Engineer: BEI Engineering Inc.

This job was an addition to a 100 year old church. It is a block structure with brick veneer. The brick were blended from four different types of brick to match the existing perfectly.

STRATHCONA COUNTY EMERGENCY NO. 6

Owner: City of Sherwood Park
Architect: S2 Architecture
General Contractor: Krawford Construction
Masonry Contractor: K.Hansen Masonry
Masonry Supplier: I-XL Masonry Supplies; Expocrete Concrete Products Ltd.

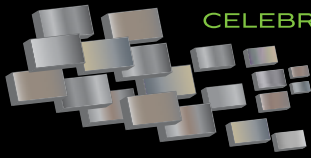
The County of Strathcona and the Strathcona Fire Department engaged S2 to programme, plan and develop the design for the new 55,000 sq ft Strathcona County Training and Emergency Services Station No. 6. This is a fully functioning response Fire Station and Fire Training

Facility connected to a fully functioning Emergency Services Response Station (Fire / EMS).

Masonry was the natural material and red brick was the natural colour to highlight the historic and traditional nature of the building. Masonry arches at the overhead doors, articulated massing, corbelling and refined brick coursing all lends itself to a warm, traditional and obvious "fire station" building facade.

The design aesthetic and the masonry material helped in many areas of the building design, not the least of which was for its visual appeal, but also for its robustness and durability to accommodate many of the fire and training features needed throughout the building.





ARTISTIC USE OF MASONRY



THOMPSON FIREPLACE

Owner: Arthur and Crystal Thompson
Architect: Stonestar Rockwerks
Masonry Contractor: Stonestar Rockwerks
Masonry Supplier: Brock White; I-XL Masonry Supplies
Engineer: Stonestar Rockwerks
Stone Supplier: Montana Rockwerks; K2 Stone
Refractory Supplier: FireRock Canada

This massive fireplace is composed entirely of stone & masonry units. Given the large open space of the great room, this fireplace was designed to provide a complementary aesthetic to the oversized fir and cedar log construction of the home. The hearth stone and mantel

were sourced from a single quarry block measuring over 14 feet long and weighing over four metric tons. The overall design begins with large stone boulders at the base, with the unit sizes decreasing as the fireplace reaches its 40 foot peak. A mountainous chute was incorporated into the upper portion of the fireplace to mimic the alpine geology of the surrounding region. The full bed stone was also laid in distinctly jagged pattern giving the fireplace incredible texture when viewed from the ground. The warmth emanating from the fireplace's large opening can be felt throughout the home and the fireplace is very much a focal point for friends and family of the owners on holidays and special occasions.

TOTEM OFFICE BLOCK

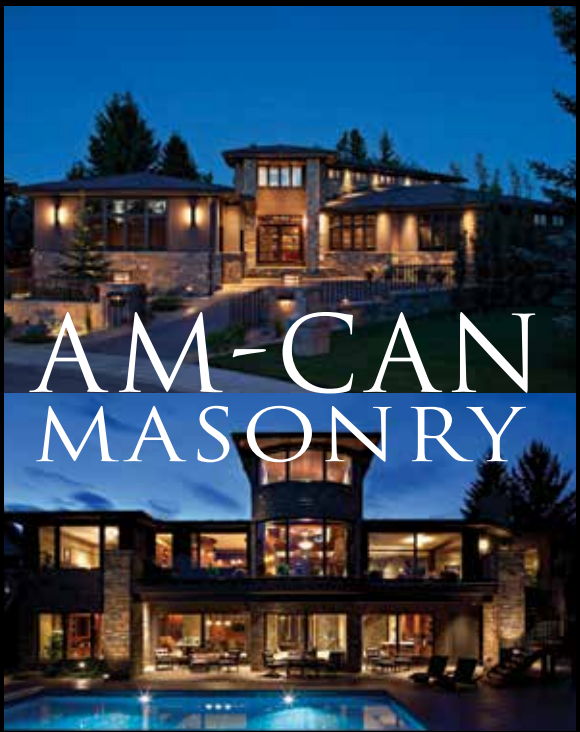
Owner: Totem Developments Ltd
Architect: id9 Associates Inc.
General Contractor: Chandos Construction
Masonry Contractor: Bear Stone Masonry
Masonry Supplier: Monarch Stone International
Engineer: Grant Structural Engineering
Business Partner: Bear Stone Masonry

Totem Block's design and craftsmanship sets this building apart from all the architecture around it. Its gorgeous traditional curves, angles and arches really bring this incredible project to the forefront of the industry. Traditionally set sandstone with limestone details, the limestone was cut on a CNC machine and smooth bands

were placed on the bottom courses. The use of large dimensionally cut sandstone enhances the entire facade. There is a limestone triple barrel arch with a raised carved Totem Block engraved in the keystone, which marks the initiation date of this legacy. From outside to inside, this building is spectacular. The steel and glass elevators capture and enhance the stone elements as they run through the building. The architectural intent was to emulate the traditional Calgary sandstone buildings of the past. This building preserves and respects the history of Alberta masonry design. Totem Block captured and exceeded that by creating a beautiful masterpiece of architecture. It now has become an iconic building site for Cochrane and hopefully an inspiration for future masonry projects.



AM-CAN MASONRY – BUILDING HOMES
TO LAST GENERATIONS



AM-CAN
MASONRY



UNIT 22, 10 WRANGLER PLACE ROCKY VIEW AB T1X 0L7



(403) 258-0180

CELEBRATING 20 YEARS
1995 – 2015



UPPER WINDERMERE

Owner: Beaverbrook Windermere Ltd.
 Architect: IBI Group
 General Contractor: G & M Stone Masonry 1993 Ltd.
 Masonry Contractor: G & M Stone Masonry 1993 Ltd.
 Masonry Supplier: Expocrete Concrete Products Ltd.
 Engineer: IBI Group
 Manufactured Stone Supplier: Sunset Stone Products
 Structural Engineer: Aedis Consulting

Masonry is a long lasting material that requires little maintenance. By using coloured masonry products, we were able to achieve the natural look that the owner, Beaverbrook Windermere Ltd., was looking for. Masonry also has the structural capacity to support signage and lighting.

WATERS RESIDENCE

General Contractor: Gord White
 Masonry Contractor: Gord White
 Masonry Supplier: Gord White
 Engineer: Gord White

The Waters house was moved to Okotoks from the intersection of Dunbow Road when Deerfoot trail was extended south of Calgary. The house has undergone a complete major renovation. In the interior the mason worked with existing ceiling heights to incorporate a load bearing beam into the Rumford style fieldstone fireplace rough in. The exterior facade is finished in natural full bed local sandstone and fieldstone.



Congratulations!

to all winners and participants of the
2015 Alberta Masonry Design Awards



IB JENSEN MASONRY LTD.

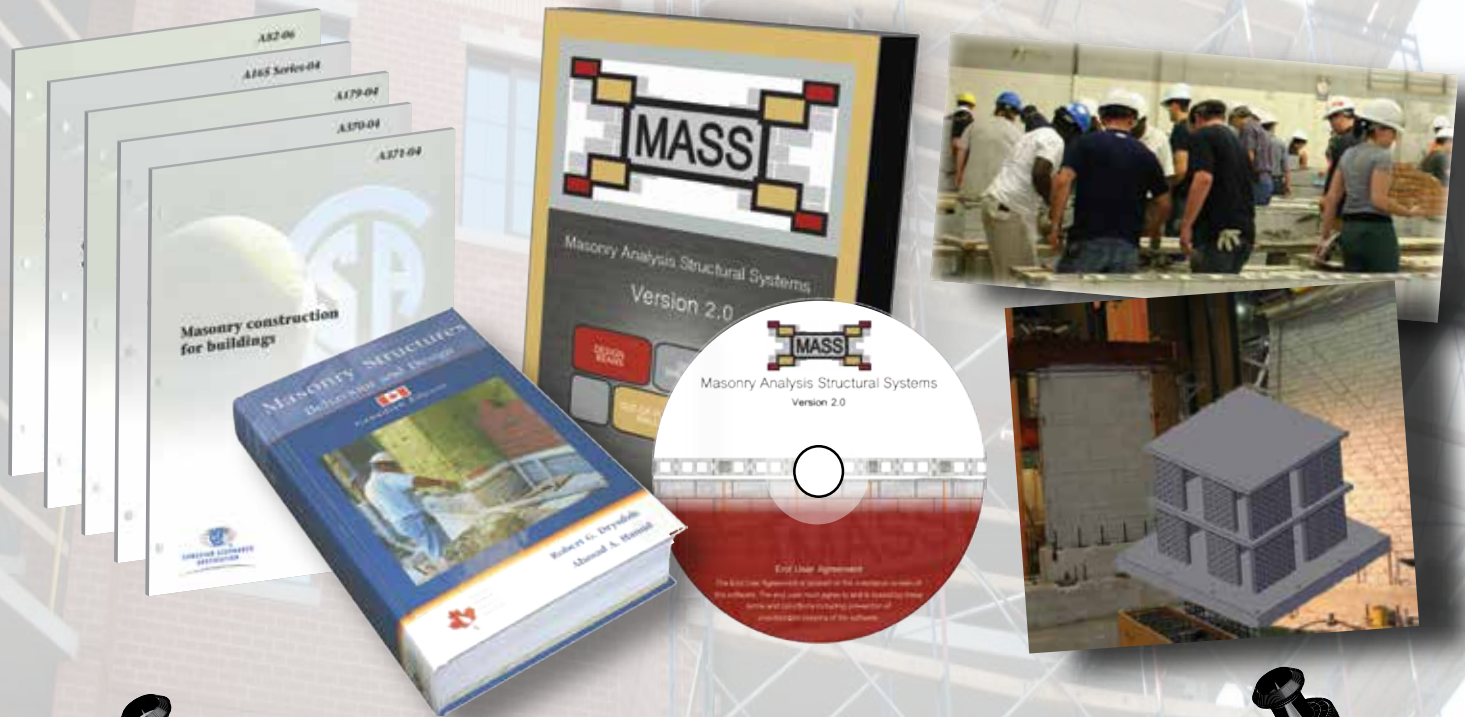
3632 Manchester Road SE • Phone 403.243.6303 • Fax 403.243.1197

CANADA MASONRY DESIGN CENTRE



CANADA
MASONRY
DESIGN
CENTRE

Committed to providing technical resources to ensure designers have the required information for the proper design of masonry buildings



- TECHNICAL ASSISTANCE
- MASONRY RESEARCH
- MASONRY DESIGN SOFTWARE: MASS
- MASONRY STRUCTURES: BEHAVIOUR AND DESIGN TEXTBOOK
- CSA STANDARDS
- EDUCATIONAL SEMINARS

Mississauga - Head Office
360 Superior Blvd. Mississauga, ON L5T 2N7
Tel: (888) 338 3336 Tor: (905) 564 0666 Fax: (905) 564 5744
cmdc@canadamasonrycentre.com

Western Office - Calgary
Tel: (403) 769 1979
Saskatchewan Office - Saskatoon
Tel: (306) 665 0622

AWARD OF EXCELLENCE



ELEVATION PLACE

Owner: Town of Canmore
 Architect: Gibbs Gage Architects
 General Contractor: Graham Construction and Engineering LP
 Masonry Contractor: Brxton Construction LP
 Masonry Supplier: Brock White
 Engineer: SNC-Lavalin / Wiebe Forest Engineering

The design intent of Elevation Place (Town of Canmore's Multiplex) was a direct architectural response to its surrounding geography. The epic and awe inspiring Rocky Mountains are reflected in the structure's form, which rise against each other like sheared mountain faces.

Masonry played a vital role in articulating the design intent as well as the functionality of the building. Black and brown Rundle stone were used on both the interior and exterior components of the building. Rundle stone was chosen for a number of reasons; first because of its timelessness.

Secondly, Rundle Stone is inherent to the mountains as all of the stone used for Elevation Place was extracted from the Thunder Stone Quarry. Furthermore, due to the building's strong relationship to the mountains, the alternate course of the black ledge stone and the brown field stone was meant to reflect the stratification and layering which characterize the Rockies. The building suggests a strong sheared base of stone from which the Bow Valley forest emerges, all of which gets topped by these dramatic snow drift planes.

AWARD OF MERIT



20/20 – 4TH STREET

Owner: Strategic Group Calgary
 Architect: Gibbs Gage Architects
 General Contractor: Aman Construction
 Masonry Contractor: Pockar Masonry Ltd.
 Engineer: Reinbold Engineering

The design of 20/20 - 4th Street was carefully created to align and contribute to the rich and unique

architectural history of Calgary's Mission neighbourhood. Being one of the earliest known residential communities in Calgary and older than the city itself, Mission plays an integral role in preserving Calgary's vibrant history.

The design intent of 20/20 - 4th street was twofold; first was to pay homage to the areas historical architecture; and the second was to create a sense of continuity along the fourth street corridor, which was achieved, in large part, by the use of red brick Masonry. The red brick is situated

along the retail spaces on the first floor, and outlines the building's massing on the remaining five floors. The strategic placement of the masonry enhances the unique design element of the building's receding profile, a technique which creates the illusion that numerous small shops were developed organically over time.

Tyndall Stone was used alongside the red brick. It introduces a clean and sleek finish to the structure, which sustains the ideology that a building can be modern yet historically relevant.

HONOURABLE MENTION

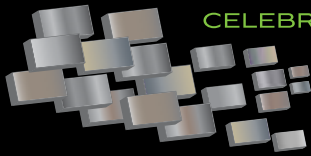


STRINGAM DENECKY LAW OFFICE

Owner: Stringam Denecky LLP
 Architect: RKH Architecture Ltd.
 General Contractor: RBG Construction Ltd.
 Masonry Contractor: Zrim Masonry
 Masonry Supplier: Brock White
 Engineer: Hasegawa Engineering

The Stringam Denecky Law Office is a new two storey building constructed in the Old Chinatown area of Lethbridge's Historic Downtown District. The design was required to be responsive and complimentary to the heritage neighbourhood in style, proportion and materials.

The building design incorporates traditional design elements in the form of arches, pilasters and brick corbelling to articulate all four elevations. It uses Manitoba Tyndall Stone for the base panels, lintels and sills which expresses the manner in which these materials would be historically used.



COMMERCIAL BUILDING



718 8TH AVE SW

Owner: Arlington Street Investments
Architect: Duel Architecture
General Contractor: Ikon Construction Management
Masonry Contractor: Pockar Group of Companies
Masonry Supplier: Lafarge Canada Inc.
Engineer: Wolsey Structural Engineering

Looking to attract new tenants, the existing downtown building underwent a challenging redevelopment to achieve a clean modern look. The scope of the project required the addition of two stories above the already existing structure. Concrete block was the ideal solution to meet both the structural and code requirements. The three concrete block walls created the loadbearing structure as

well as the required fire protection. The use of concrete block also greatly influenced the building's appearance and color pallet. Embracing the natural concrete color of the masonry, the color selections for the front facade were chosen to create a cohesive modern monochromatic look. A concrete block elevator shaft was also added to the front of the building. The elevator shaft provided the necessary circulation, and also created a strong vertical element juxtaposing the horizontal elements. Additional challenges encountered included restoration to the existing concrete block walls, and the site conditions required the use of a crane for masonry installation.

ALBERTA HOTEL

Owner: Five Oaks Inc.
Architect: Dub Architects Ltd.
General Contractor: TC Biggs Construction Ltd.
Masonry Contractor: Remo's Masonry
Masonry Supplier: I-XL Masonry Supplies
Engineer: Protostatix Engineering Consultants Inc.

The Alberta Hotel, built in 1903, but demolished in 1984. The original bricks and sandstone from the hotel were marked with painted numbers then tagged for reassembly. Bricks and sandstone from the nearby Rothesay Apartments was also salvaged and stored for 25 years. In 2009, Five Oaks Inc. and Dub Architects proposed to

reconstruct the Alberta Hotel and the Rothesay facades approximately twenty feet west of the original hotel location.

All stone was laid out and puzzled together on the floor of a large rented warehouse. Grout colour and joint treatment required experimentation so that the original character was achieved. Initials and names carved into the stone over time were carefully protected and retained. The eastern half of the facade along Jasper Avenue was faithfully reconstructed using new brick similar in colour to the original brick. The original demolished building had wood-frame construction with small spaces on a mixture of levels. The new building was steel frame construction with clear span spaces.



BIG HILL EAST RESERVOIR

Owner: City of Calgary
Architect: Goodfellow Architecture Ltd.
General Contractor: Maple Reinders
Masonry Contractor: Pockar Masonry Ltd.
Masonry Supplier: Expocrete Concrete Products Ltd.
Engineer: Associated Engineering Alberta Ltd.

This modest structure contains the pumps and motors for a large underground reservoir that provides potable water to the northeast quadrant of the City of Calgary. Its isolated site is located on the eastern slopes of Nose Hill and has commanding views of the surrounding prairies. As such, the building becomes a prominent landmark that

stands out on the undeveloped native grasslands that surround it. The building form is reminiscent of the small granaries that still dot the prairie landscape; albeit that they are rapidly disappearing with the passage of time.

Modern long lasting exterior materials were chosen to help convey the central message of the Calgary Water Resources, that being the delivery of safe, high quality water to the citizens of Calgary. A durable buff colored split faced concrete block was selected at the service entrance for its compatibility with the dry prairie grasses that surround the site and to set off the Indian Red phenolic wall panels, the charcoal grey metal roof and the light grey precast concrete base. The interior walls are made of concrete block for serviceability and longevity.

BLACKFOOT POINT

Owner: Centron Group of Companies
Architect: NORR Architects Engineers Planners
General Contractor: Centron Group of Companies
Masonry Contractor: Pockar Masonry Ltd.
Masonry Supplier: I-XL Masonry Supplies
Engineer: Grant Structural Engineering

Blackfoot Point Business Park, situated on top of the Deerfoot Bluffs, is adjacent to one of Calgary's largest retail developments. This contemporary office campus consists of 4 buildings; one and two storeys in height. Home to office tenants and a laboratory, the site delivers a modern architectural presence with its use of colour and bold articulations. Being respectful to the natural

aesthetics of the surrounding bluffs, the project uses ledge stone that blends into the adjoining landscape. The warm hues and light tones embedded in the stone are aesthetically pleasing and in proportion to the pedestrian scale. Architecturally, the stone elements arise to become monumental at their peak height. This stone feature was important in the overall design strategy which was to convey a notion of longevity and strength. These concepts are prevalent throughout all buildings in the stone materials and colour palette.





BONNYBROOK WWTP

Owner: City of Calgary
 Architect: Stantec
 General Contractor: Graham Construction and Engineering LP
 Masonry Contractor: Pockar Masonry Ltd.
 Masonry Supplier: Lafarge Canada Inc.; Cast Supply Inc.
 Engineer: Stantec

The significant Masonry exterior on this City of Calgary owned Waste Water Treatment Plant will provide long lasting durability and low life cycle costs for the City's budget. The attractive structure enhances the Industrial area.

CALGARY MEALS ON WHEELS

Owner: Calgary Meals on Wheels
 Architect: Hasegawa Zillman Architecture Engineering
 General Contractor: Syncon Management Ltd.
 Masonry Contractor: Aurora Masonry Ltd.
 Masonry Supplier: Lafarge Canada Inc.

This project is located in the Great Plains IV Industrial Park. Architectural Guidelines for the Park dictated that each building project have, for example, integrated architectural treatment to achieve visual interest, facade articulation to encourage formal depth and variation in the building massing and materials of long term durability.

Much of the building is clad in prefinished insulated metal panels. Articulation is achieved in the exterior facade by creating pilasters of blue coloured vertical panels on a base layer of white horizontal panels.

A band of masonry around the base of the building contributed to the articulation and visual interest in the facade by providing contrasting colours, smooth and split faced textures and additional thickness.



CALGARY WINTER CLUB EXPANSION

Owner: Calgary Winter Club
 Architect: Group2 Architecture
 General Contractor: Chandos Construction
 Masonry Contractor: Pockar Masonry Ltd.
 Masonry Supplier: Brock White; Lafarge Canada Inc.
 Engineer: BEI Engineering Inc.

Group2 Architecture Interior Design Ltd., predecessor Quinn Young Architects, was hired to lead a major renovation of the existing Calgary Winter Club as Phase One of an anticipated multi phase project. Though the existing building incorporated masonry in its original design, this renovation provided the club with an updated look that doubled for durability and esthetic appeal.

The addition of exterior masonry also provided an appealing scale to the building and interior masonry was incorporated to suit required fire ratings.

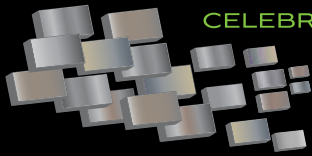
The exterior of the building was revamped to include new finishing materials. Stucco was mixed with prefinished metal to showcase the urban design initiatives of the building. Brick was used to create a warm, classic rich look that is appealing to both passerby's and facility users now and into the future.

CAPITOL THEATRE

Owner: Fort Edmonton Management Company
 Architect: Allan Partridge / HIP Architects
 General Contractor: PCL Construction Management Inc.
 Masonry Contractor: Scorpio Masonry (Northern) Inc.
 Masonry Supplier: Cast Supply Inc.
 Engineer: Stantec Buildings

This is a recreation of a theatre that once stood on Jasper Avenue and 101 Street. By careful and painstaking analysis of both extant photographs and research on existing contemporary masonry building in Edmonton the design team crafted a solution that is both elegant and faithful to the original.





CIBC BANK – BEAUMONT

Owner: Sobey's Development
 Architect: Wensley Architecture (Alberta) Ltd.
 General Contractor: Midlex Construction Inc.
 Masonry Contractor: Brxton Construction LP
 Masonry Supplier: Brock White

The project is made up of 3,400 SF of brick veneer. The exterior veneer is made up of brick, Tyvek, TWF membrane base flashing and Fero Engineer Tie System. The design has combination of Running bond and Rowlok coursing to give it some detailing so it does not look like just a straight commercial box building. The CIBC colors work well with the light color brick chosen for this project.

CIBC BANK – HAMPTON

Owner: Canadian Imperial Bank of Commerce
 Architect: HOK Architects Corporation
 General Contractor: Kor Alta Construction Ltd.
 Masonry Contractor: Brxton Construction LP
 Masonry Supplier: Brock White; I-XL Masonry Supplies

The CIBC Hamptons is made up of 4,750 SF of brick veneer in combination with Tyvek, TWF membrane base flashing and Fero Engineered ties. We used a light colored brick which works well with the CIBC colors. Built on a very busy corner, it blends well with the adjacent housing and commercial properties around it.



CURRIE PUMP STATION

Owner: City of Calgary
 Architect: CH2M Hill
 General Contractor: Graham Construction and Engineering LP
 Masonry Contractor: Pockar Masonry Ltd.
 Masonry Supplier: Brock White; I-XL Masonry Supplies

This pump station nestled within the Richmond Green Golf Course in SW Calgary used 3 different masonry materials. Hanson, Williamsburg and Louisiana bricks were laid in a specific running bond pattern with soldier course detailing. Shouldice full-bed manufactured stone blocks were used as quoins to highlight the buildings corners, providing a timeless and maintenance free facility.

EDMONTON INTERNATIONAL AIRPORT

Owner: Edmonton Regional Airports Authority
 Architect: Stantec Architecture Ltd.
 General Contractor: PCL Construction Management Inc.
 Masonry Contractor: Brxton Construction LP
 Masonry Supplier: Cast Supply Inc.; I-XL Masonry Supplies
 Supplier: Expocrete Concrete Products Ltd.

The Edmonton International Airport expansion has served to upgrade the airport and make it more efficient. This new facility includes a combined office and control tower as well as an expanded terminal which included both arrivals and departures. It is also home to the EIA's new marketplace that includes 12 new shops and restaurants. Gracom's scope included the supply and installation of over 120,000 bricks and 65,000 standard blocks.





EIGHTH AVENUE PLACE

Owner: Hines as Agent for Immeubles SNPL Inc
 Architect: Pickard Chilton Architects
 General Contractor: EllisDon Construction Services Inc.
 Masonry Contractor: G & A Masonry Ltd.
 Masonry Supplier: Expocrete Concrete Products Ltd.
 Engineer: BBSTEK Engineering
 Field Architect: Gibbs Gage
 Envelope Engineer: Halcrow Yolles

A truly monumental piece of modern architecture, it is also one of the first certified LEED Platinum office complexes in all of Canada. It is a physical manifestation and affirmation of the city's connection to the Alberta landscape and the independent spirit of its people. Thin natural stone used to clad podium of two glazed 40+ storey towers that mimic the mountains to the west of Calgary.

EPCOR ROSSDALE SODIUM HYPOCHLORITE FACILITY

Owner: EPCOR Water Services Inc.
 Architect: Stantec Consulting Ltd.
 General Contractor: Maple Reinders Inc.
 Masonry Contractor: Brxton Construction LP
 Masonry Supplier: Expocrete Concrete Products Ltd.
 Supplier: I-XL Masonry Supplies

This project would be consider a great masonry project as it uses the masonry wall system to perfection. The 5,100 SF of exterior wall system is made up of Brick Veneer, 4 " Roxual Insulation, Blueskin SA with TWF base membrane flashing and Fero Engineered ties. All 8,900 SF of interior walls and back up walls for the brick veneer is in a 25cm reinforced concrete block. The combination of the two types of masonry create the perfect wall system for durability and structure.



EPCOR TOWER – STATION LANDS

Owner: Station Lands Ltd.
 Architect: Kasian Architecture interior Design and Planning Ltd.
 General Contractor: Ledcor Construction Limited
 Masonry Contractor: Brxton Construction LP
 Masonry Supplier: Brock White

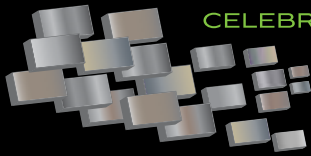
Epcor Tower Station Lands is currently the tallest building in Edmonton at 29 storeys. Our scope of work included the supply and installation of Tyndall stone panels and Atlantic Black granite panels on a clip system on the interior and exterior of the building and exterior granite pavers.

ESSO – WALDEN

Owner: Imperial Oil Limited
 Architect: CTM Architecture Ltd.
 General Contractor: KellerDenali Construction Ltd.
 Masonry Contractor: Brxton Construction LP
 Masonry Supplier: Brock White; Expocrete Concrete Products Ltd.

This project consisted of the supply and installation of 20cm concrete block and cultured stone.





FISH CREEK CHAPEL

Owner: McInnis & Holloway Funeral Home Ltd.
Architect: NORR Architects Engineers Planners
General Contractor: Vertical Properties
Masonry Contractor: Pockar Masonry Ltd.
Masonry Supplier: Brock White
Engineer: SNC Lavalin

Traditional Red I-XL brick was used on this SE Calgary Funeral Home to create an aesthetically pleasing and elegant exterior requiring little to no maintenance.

GLENMORE WTP UPGRADE PLANT PROJECT

Owner: City of Calgary
Architect: Goodfellow Architecture Ltd.
General Contractor: PCL Construction Management Inc.
Masonry Contractor: Brxton Construction LP
Masonry Supplier: Brock White; Expocrete Concrete Products Ltd; I-XL Masonry Supplies Ltd.

The Residuals and Pretreatment Facilities were designed to meet the challenges of changing environmental issues and to accommodate the needs of a growing city.

Constructed entirely of traditional red brick and tyndall stone, the original buildings and their many additions have stood the test of time and are now on a National Registry of significant Canadian architecture. As such, these latest additions were designed to respect the architectural traditions of the past, without overwhelming the smaller, older facilities.

The designers chose to employ the original red brick and tyndall stone as a base for these new, much larger buildings, but zinc and phenolic paneling was added on the upper reaches to reduce the impact of the large mass required for the new building program. The interior demising walls of the new buildings also use painted concrete block extensively as it has proven to be highly durable and serviceable.



JIFFY LUBE

Owner: Lube X / Jiffy Lube
Architect: Lube X / Jiffy Lube
General Contractor: Temple Contracting
Masonry Contractor: Pockar Masonry Ltd.
Masonry Supplier: Expocrete Concrete Products Ltd.; Brock White
Engineer: Venture Engineering Consultants Ltd.

The owner of this chain of Jiffy Lube/LubeX has a strong preference for masonry materials for all its buildings. Structural masonry was used on this project due to its strength, ability to meet the buildings code, longevity of the product and durability. The masonry will perform well and look great for years to come.

LDS CHURCH

Owner: LDS
Architect: GDG Architectural Group
General Contractor: Westcor Construction Ltd.
Masonry Contractor: Brxton Construction LP
Masonry Supplier: I-XL Masonry Supplies

This LDS Church located in Airdrie had special shaped Brick wrapped around the exterior doors and windows. The Architect designed the brick around these openings to resemble picture frames. Quoins, arches & oversized cants (at the base) were used which added esthetically pleasing architectural details into the design of this project.





LONG & MCQUADE RETAIL STORE

Owner: Long Holdings Inc.
 Architect: Rick Balbi Architects Ltd.
 General Contractor: Dayton Mills Construction Ltd.
 Masonry Contractor: Brxton Construction LP.
 Masonry Supplier: Expocrete Concrete Products Ltd.
 Supplier: Brock White

This project consisted of the supply and installation of 20cm splitface block and faux stone.

LUMINO BUILDING A & B

Owner: The City of Calgary - Building A;
 Kanas Corporation - Building B
 Architect: Casola Koppe Architects
 General Contractor: Kanas Corporation
 Masonry Contractor: Pockar Masonry Ltd.
 Masonry Supplier: Arriscraft; Lafarge Canada Inc.
 Engineer: Tower Engineering
 Mechanical / Electrical: Hemisphere Engineering

A combination of split and smooth face 190 x 380 blocks were utilized to create a prominent 2 to 4 storey podium facing 2 streets and a plaza podium.



MAXWELL BATES BLOCK

Owner: 771981 Alberta Ltd.
 Architect: Eleven Eleven Architecture
 General Contractor: Ledcor Construction Limited
 Masonry Contractor: Brxton Construction LP
 Masonry Supplier: Brock White; Expocrete Concrete Products Ltd.
 Engineer: Grant Structural Engineering
 Supplier: Fero Corporation

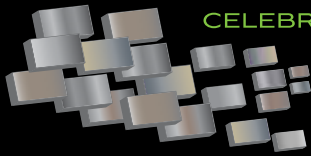
This project consisted of a complete exterior envelope for a 4-storey commercial building including brick, stone, EIFS veneer, stone copings and stone and precast sills. Interior CMU walls were installed in the parkade as well as the main and upper levels. A HYDRO system was used due to limited space.

McDONALD'S – GLASTONBURY HUSKY

Owner: McDonald's Restaurants of Canada Ltd.
 Architect: Reprise Design Architecture LLC
 General Contractor: PCL Construction Management Inc.
 Masonry Contractor: Brxton Construction LP
 Masonry Supplier: Richvale York Block Inc.
 Supplier: Brock White

This McDonald's has 4,500 SF of exterior concrete block veneer. The 10 cm concrete block veneer is used in different laying patterns such as running, stack and vertical coursing. Not only do they use different laying patterns, they also use a variety of combinations of colors, shapes and sills to create column and banding effects on all elevations of this project. This is a far change from your typical McDonald's of the past.





COMMERCIAL BUILDING



McDONALD'S RESTAURANT

Owner: McDonald's Restaurants of Canada Ltd.
Architect: Reprise Design Architecture LLC
General Contractor: PCL Construction Management Inc.
Masonry Contractor: Pockar Masonry Ltd.
Masonry Supplier: Brock White

Burnished architectural concrete block were used for this McDonald's restaurant in NE Calgary. Different colours, bond patterns and recessed brick courses created an interesting and architecturally pleasing lineal exterior.

McPHERSON PLACE

Owner: Bridges Attainable Housing
Architect: BKDI Architects
General Contractor: Devitt & Forand
Masonry Contractor: Pockar Masonry Ltd.
Masonry Supplier: Cast Supply Inc.
Engineer: TRL & Associates

McPherson Place is a 6-storey, 160 unit attainable housing development in Calgary. As a new development in 'The Bridges' (inner city urban renewal), there is an architectural requirement for 20% minimum masonry on the exterior. While this is 'Attainable Housing', it was important that the design and quality of this building be in context with the

surrounding market residential. The use of brick provides a quality aesthetic. Brick is used to enhance the buildings contemporary character. As such, brick detailing, colour and finish was kept simple and clean, without historical reference. A 2-storey masonry base wraps around the building, which fronts onto 3 streets. From the viewpoint of pedestrian environment, the brick provides a sense of permanence and quality.

Construction costs are critical to the viability of attainable housing, and their budgets require economic materials. In this case, the quality of the building was achieved without sacrificing the budget.



MITCHELL BUSINESS CENTRE

Owner: Mitchell Group Alberta Inc.
Architect: Chamberlain Architect Services Ltd.
General Contractor: Graham Construction and Engineering LP
Masonry Contractor: Brxton Construction LP
Masonry Supplier: Brock White; Expocrete Concrete Products Ltd.
Engineer: SWS Engineering Inc.

Supply and installation of splitface concrete block, ground face Terazzo block, Tyndall stone.

MOUNTAIN VIEW CREDIT UNION

Owner: Mountain View Credit Union
Architect: DIALOG
General Contractor: Shunda Consulting & Construction Management
Masonry Contractor: Western Masonry Structures Ltd.
Masonry Supplier: Cast Supply Inc.
Engineer: DIALOG
Interior Designer: DIALOG
Mechanical & Electrical Engineer: SNC Lavalin

Mountain View Credit Union (MVCU) is a financial institution that was formed in 1977 and operates throughout central Alberta. It is a modern, forward thinking institution that is rooted in tradition - this

dichotomy provided the inspiration for the project. Red brick and curtain wall glazing were utilized as the primary cladding materials, juxtaposing the solidity of a traditional material with a modern aesthetic.

Natural materials were chosen for the building to express the rural roots of MVCU. On the exterior, the building was conceived of as a solid block of red brick, carved away at strategic locations and replaced with glass to allow light to filter into the building. On the interior, a large rundle stone wall is the principle organizing feature which extends through to the exterior, marking the main entry on the south facade, defining the two storey atrium and creating a separation for banking services.





NUERA TOWER PHASE 1

Owner: Cove Properties Ltd.
 Architect: S2 Architecture
 General Contractor: Cove Properties Ltd.
 Masonry Contractor: Brxton Construction LP
 Masonry Supplier: Brock White
 Supplier: I-XL Masonry Supplies

This project has a two storey facade which consisted of red Saxon brick, along with 15,000 square feet of Splitface and smooth-faced Tyndall stone. There is also interior block work on four parkade levels and the main floor. The exterior consisted of 68,000 concrete masonry units.

NW LRT EXTENSION – ROCKY RIDGE / TUSCANY

Owner: City of Calgary
 Architect: AECOM Canada Ltd.
 General Contractor: EllisDon Construction Services Inc.
 Masonry Contractor: G & A Masonry Ltd.
 Masonry Supplier: Thunderstone Quarries

As masonry contractors we do not design the building. The exterior and portions of the interior are clad in Black Rundle rock that originates in the great Rocky Mountains.



RBC SUNRIDGE EAST RETAIL

Owner: Royal Bank of Canada
 Architect: DIALOG
 General Contractor: L.B. Chapman Construction
 Masonry Contractor: Brxton Construction LP
 Masonry Supplier: Brock White
 Engineer: Protostatix Engineering Consultants Inc.
 Supplier: Expocrete Concrete Products Ltd.

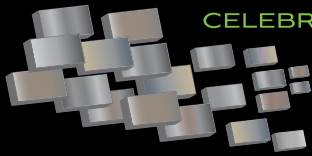
This RBC was wrapped with 3,600 square feet of Sanddrift Renaissance Stone 300 X 600 from Arriscraft. Location of this project is at Sunridge Mall. Masonry was used to provide stability and enhance long term performance for this financial institution.

SILVERADO SOBEY'S

Owner: Ronmor Developers Inc.
 Architect: Nejmark
 General Contractor: Elan Construction Ltd.
 Masonry Contractor: Pockar Masonry Ltd.
 Masonry Supplier: Expocrete Concrete Products Ltd.; I-XL Masonry Supplies; Montana Rockworks

The combination of using thin stone veneer, brick and splitface concrete block Masonry was instrumental in making what could have been a relatively utilitarian building into an attractive and durable structure that fits well into the S.W. residential community of Silverado and will look great for years to come.





COMMERCIAL BUILDING



SOUTHGATE CHEVROLET BUICK GMC

Owner: Linder Armitage Developments Inc.
 Architect: Rick Balbi Architect Ltd.
 General Contractor: Barjac Construction Management Inc.
 Masonry Contractor: Brxton Construction LP
 Masonry Supplier: Expocrete Concrete Products Ltd.
 Engineer: Wolsey Structural Engineering
 Supplier: Brock White

This project consisted of exterior cladding that was made up of 6,200 coloured split-face and standard block which were installed behind the metal cladding. In total, 12,500 architectural and standard concrete masonry units were used.

TECHMATION ELECTRIC & CONTROLS

Owner: Techmation Electric & Controls
 Architect: Echo Design Inc.
 General Contractor: Seko Construction
 Masonry Contractor: Aurora Masonry Ltd.

We feel that the use of Natural Elements such as Stone allow us to provide a contrast in building materials, these contrasts in color and material make for striking Design Elements.

In the Techmation Project the Contrast between the Charcoal stone and the Black and Red composite panels create simple but Elegant Architectural Details.



THE FAMOUS FIVE INTERPRETIVE CENTRE AT HERITAGE PARK

Owner: Heritage Park Historical Village
 Architect: Steven Ho Architecture Inc.
 General Contractor: Shane Homes
 Masonry Contractor: Pockar Masonry Ltd.
 Masonry Supplier: Brock White

The Famous Five Interpretive Center located at Heritage Park celebrates the significant contributions of 5 women to Canadian history as they sought to have women legally considered 'persons'. This building is a replica of one of the 5, Nellie McClung's personal residence which was originally located in the Beltline area of Calgary and built in 1907.

Masonry products were carefully selected to match the original homes classic exterior and interior fireplace.

TOAD N TURTLE

Owner: Big Dawg Ventures Ltd.
 Architect: Ti Studios / C. Ben Pond Architect
 General Contractor: Seko Construction
 Masonry Contractor: Aurora Masonry Ltd.
 Masonry Supplier: Brock White

This pub house and grill is located in the growing area of Shepard. Nestled in with other restaurants and businesses, this English style pub selected a charcoal colored stone for the large artistic fireplace creating the impression that it is growing up through the building allowing patrons to use it both indoors and outdoors. The stone gives it a warm and textured look and feel. The stainless steel accents bring out the beauty and color of the stones.





TOTEM OFFICE BLOCK

Owner: Totem Developments Ltd
 Architect: id9 Associates Inc.
 General Contractor: Chandos Construction
 Masonry Contractor: Bear Stone Masonry
 Masonry Supplier: Monarch Stone International
 Engineer: Grant Structural Engineering
 Business Partner: Bear Stone Masonry

Totem Block's design and craftsmanship sets this building apart from all the architecture around it. Its gorgeous traditional curves, angles and arches really bring this incredible project to the forefront of the industry. Traditionally set sandstone with limestone details, the limestone was cut on a CNC machine and smooth bands

were placed on the bottom courses. The use of large dimensionally cut sandstone enhances the entire facade. There is a limestone triple barrel arch with a raised carved Totem Block engraved in the keystone, which marks the initiation date of this legacy. From outside to inside, this building is spectacular. The steel and glass elevators capture and enhance the stone elements as they run through the building. The architectural intent was to emulate the traditional Calgary sandstone buildings of the past. This building preserves and respects the history of Alberta masonry design. Totem Block captured and exceeded that by creating a beautiful masterpiece of architecture. It now has become an iconic building site for Cochrane and hopefully an inspiration for future masonry projects.

WALDEN II CIBC

Owner: 1531873 Alberta Ltd.
 Architect: Abugov Kasper Architecture
 Engineering Interior Design
 General Contractor: Scott Builders Inc.
 Masonry Contractor: Brxton Construction LP
 Masonry Supplier: Brock White; I-XL Masonry Supplies

Masonry was selected for this CIBC which is located in one of the newer sub-divisions in Calgary. A portion of 4,400 square feet of 100 X 600 & 300 X 600 Sage dressed Renaissance Arriscraft was used on the interior vestibule. The remainder was used along with 2,500 square feet of Eldorado Lucera faux stone around the exterior. The use of both stones helped make this area more esthetically pleasing.



WATERFRONT – PHASE 1A & 1B

Owner: Anthem Riverfront Land LP
 Architect: NORR Architects Engineers
 Planners
 General Contractor: Anthem Riverfront Land LP
 Masonry Contractor: Brxton Construction LP
 Masonry Supplier: Expocrete Concrete Products Ltd.
 Engineer: John Bryson & Partners

The exterior facade consisted of 11,000 square feet of 200mm and 300mm of sandstone. The interior included 3,500 concrete blocks.

BOND

MASONRY LTD.

“Celebrating 40 years of quality innovative masonry.”

PHONE: (780) 973-5843
 CELL: (780) 220-4265



Laying the Foundation for the Future



20203-113 Avenue
Edmonton, AB T5S 2W1
Tel: 780.447.1682
Fax: 780.447.1642

418A-48 Street East
Saskatoon, SK S7K 5T9
Tel: 306.382.7775
Fax: 306.382.7642



**SCORPIO
MASONRY**
WWW.SCORPIOMASONRY.COM

THE LEGACY OF THE LEDGE

By Dr. Mark D. Hagel

The Alberta Legislature Building in Edmonton opened its doors on September 3, 1912. Serving as the permanent home to the Alberta provincial government, it has become a provincial historic treasure. Constructed between 1907 and 1913, it was designed by architect Allan Merrick Jeffers in Beaux-Arts architectural style and included two terra cotta clad domes. Beaux-Arts architecture was popular for public buildings during this period. The style was heavily influenced by Greek, Roman, and Egyptian architecture, and suggested power, permanence, and tradition. Beaux-Arts buildings are characterized by a large central dome above a spacious rotunda, a symmetrical T-shaped plan, doors and windows decorated with arches or lintels, and a portico supported by massive columns. Some of the typical characteristics of Beaux-Arts architecture included, rusticated and raised first storey, arched windows, arched and pedimented doors, flat roofs, symmetrical layouts, coordinated sculpture, murals, and mosaics and classical architectural details. The “Leg” (pronounced “Ledge”), a name to which the Legislature Building is affectionately referred, includes a T-section with stem running in the north-south direction and extending 77 m (254 feet) in length and 24 m (80 feet) in width. The attached east-west wings each measure about 40 m (130 feet) long and 29 m (95 feet) wide. A structural steel skeleton supports the exterior cubic dimension stone masonry.

The first floor is clad with granite from Vancouver Island. The floors above are finished with Alberta Paskapoo sandstone quarried from

Photo Credit: Construction of the front and dome façade of the Legislature Building in 1912 (Glenbow Archives NC-6-50)







the Glenbow Quarry, at that time, situated west of Calgary in Southern Alberta and one of many local quarries serving Alberta at the turn of the last century. The terra cotta used on the Major and Minor Domes was manufactured in England by Gibbs & Canning, which is no longer in operation. The Major Dome with Lantern is a structural steel semi-spherical dome and is the most prominent and highly visible feature of the “Leg”, rising 54 m (176 feet) in height at its peak. The Minor Dome with Cupola is a smaller, low-rise saucer dome of structural concrete. It extends 7 m (23 feet) above roof level, and rests on the south wing of the building above the “House” where the legislative assembly meets when government is in session.

The Major Dome, with Lantern, is a structural steel semi-spherical dome and is the most prominent and highly visible architectural feature of the building. The Minor Dome, with Cupola, is a low-rise saucer dome of structural concrete. In 2010, the Alberta Government committed to a massive project of full removal and replacement of the failing terra cotta masonry assembly on both domes. The pre-construction process began with condition surveys, followed with the development of cost-effective and buildable solutions and issuance of architectural and structural drawings, and concluded with prequalification of masonry contractors. In honour of the 100th anniversary of the building’s opening, work commenced in 2012 with





Limestone Fits YOUR Style.

Create a distinctive look that will enhance the beauty and lasting value of your next residential or commercial project. For inspiration visit IndianaLimestoneCompany.com.

INDIANA 
LIMESTONE

demolition of terra cotta on both domes. All work was completed in the spring of 2014.

The restoration employed the technologies of today to preserve Alberta's heritage for tomorrow including the use of BIM modelling to help ensure details worked in theory and in practice, and existing terra cotta layouts were accurately recorded for replication. The project was literally, "a once in a lifetime opportunity" given the longevity of masonry construction. This extremely complex reconstruction required a highly skilled team of craftsmen to accurately replicate and fabricate the existing terra cotta profiles and units, and to carefully lay the units, respecting the spatial orientation and positioning needed to suitably envelope the existing structure and to accurately replicate the original. Reproduction and fit began with the terra cotta fabricator creating accurate setting drawings of the original terra cotta, by duplicating existing units and

profiles using computer imaging, cutting, and moulding, and by replicating original terra cotta colours and finishes. On site, the skilled masons ensured that the installation satisfied terra cotta layout and unit placement, and that all design details for structure and water management were suitably constructed in accordance with the approved shop drawings. All original architectural terra cotta units were removed and replaced with new terra cotta replicates to preserve the historical identity of the building.

This unique, challenging, and rewarding project, required the dedication of Alberta Infrastructure and the Alberta Government, the design team, the product manufacturers and particularly the manufacturer of the terra cotta, the contractors, and the masons. The completed project is a testament to the abilities of those who worked so diligently to preserve the historic fabric of an iconic Alberta building and to the durability of terra cotta masonry dome.



FERO

**BREAK-AWAY
FIRE-RELEASE CONNECTOR**

Allows roof and floor joist collapse without compromising firewall integrity.

Can be used for lateral or load bearing support.

For details go to: www.ferocorp.com



G&M
STONE MASONRY LTD.
Since 1971

Proud to Sponsor the
2015 Alberta
Masonry Design
Awards

Old World Craftsmanship & Quality
Modern Techniques & Standards

- Brick & Block Work
- Natural Stone Work
- Manufactured Stone Work
- Custom Landscape Work
- Entry Features
- Water Features
- Retaining Walls
- Columns
- Foundation & Concrete Work
- Custom Precast
- Architectural Work
- Exterior Building Faces
- Interior Walls
- Decorative Features
- Masonry Fire Places
- Design Input

Edmonton
12545-133 Street
780.454.0815
pino@gmstone.com

Calgary
4049-11 Street S.E.
403.225.2000
gino@gmstone.com

**Alberta
Masonry
Council**

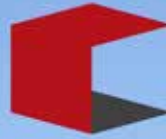
www.gmstone.com



Proud supporter of the
Alberta Masonry Design Awards

AURORA MASONRY LTD

Email: info@auroramasonryltd.ca
Phone: 403-266-2186
www.auroramasonryltd.ca



**CAST
SUPPLY**

*Proud supporters of the Alberta
Masonry Council and the 2015
Alberta Masonry Design Awards!*



www.castsupply.ca

Colours and Textures for Building Better Cities



Product Quality Control and Commitment to Service

Permanent Beauty with Concrete Block



building better cities

Lafarge Canada Inc.
6920 - 13th Street SE
Calgary, Alberta T2H 3B1
Phone: 403.804.0074
Email: Fred.Woodlock@lafarge.com

Lafarge Canada Inc.
530 - 9th Avenue North
Lethbridge, Alberta T1H 1E4
Phone: 403.332.6200
Fax: 403.328.8834

AWARD OF EXCELLENCE



ST. JOSEPH SEMINARY

Owner: The Catholic Archdiocese of Edmonton
Architect: DIALOG
General Contractor: Dawson Wallace Construction Ltd.
Masonry Contractors: Park Brick and Block Limited
Masonry Supplier: I-XL Masonry Supplies; Brock White
Engineer: DIALOG

St. Joseph Seminary is a sacred and important symbol of Catholic faith. It sits on the high point of a beautiful, pastoral site on the edge of the North Saskatchewan River valley near downtown Edmonton.

The design of St. Joseph Seminary is about faith and community. It is grounded in the history and tradition of religious architecture with spaces for learning, prayer, community and contemplation. At the same time, it is open and inviting, the embodiment of a contemporary and vital institution with strong connections to the broader community. It is sustainable and enduring architecture, appropriate and respectful of its surroundings.

The material finishes of stone, brick, metal and glass provide a quiet, enduring palette. Masonry and stone are important features of the seminary. They anchor the design, rooting the seminary in the traditions of religious architecture, lending a sense of permanence to the Seminary.

AWARD OF MERIT

EDMONTON REMAND CENTRE

Owner: Government of Alberta
Architect: ONPA Architects
General Contractor: Stuart Olson
Masonry Contractor: Scorpio Masonry (Northern) Inc.
Masonry Supplier: Expocrete Concrete Products Ltd.; Cast Supply Inc.
Engineer: BPTec Engineering



The development of the exterior design characteristics and extensive use of masonry for the "public face" of the Edmonton Remand Centre recognizes and balances several objectives. These include the development of building facade expressions, which appropriately portray the building's function and identity; A design expression that acknowledges an important provincial building for Justice, with efforts to relate well to the community while

responding to security and environmental conditions. The exterior design with the use of masonry establishes the identity of the centre - a strong, secure and safe place, with a distinct aesthetic.

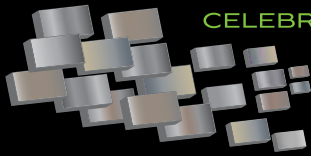
HONOURABLE MENTION

SOUTHWEST POLICE STATION

Owner: The City of Edmonton
Architect: Stephens Kozak Architects Ltd. / ACI Architecture Inc.
General Contractor: Clark Builders
Masonry Contractor: Scorpio Masonry (Northern) Inc.
Masonry Supplier: Brock White; Expocrete Concrete Products Ltd.



Splitface tyndall stone accented with smoothface tyndall was used throughout the exterior of the building. An exciting design feature on this project is the angled tyndall stone wall, showcasing the versatility of masonry.



EDUCATIONAL/INSTITUTIONAL



ACHESON FIRE HALL

Owner: Town of Stony Plain
Architect: S2 Architecture
General Contractor: Delnor Construction
Masonry Contractor: K.Hansen Masonry
Masonry Supplier: Expocrete Concrete Products Ltd.

This is a 6-bay responding fire station, training centre, headquarters, and back-up EOC for the Parkland County. The department has paid on- calls, volunteers and full time firefighters. The station is designed to suit the industrial location of Acheson and be suitable for a public building with a civic presence. Masonry was used to evoke the solidity and stability of the County while providing exceptional durability. The warm colour was used to bring

warmth to the public face of the facility and the gridded pattern was used to visually break up the mass of the building facades.

The building is designed as an Emergency Crisis Management Centre and as such is also designed to accommodate the public in time of crisis and therefore a stable, civic, warm building was seen as an appropriate image to convey to the citizens of Parkland County during a crisis.

**AMBROSE UNIVERSITY COLLEGE 2ND
RESIDENCES**

Owner: Ambrose University College
Architect: DIALOG
General Contractor: Elan Construction Ltd.
Masonry Contractor: Pockar Masonry Ltd.
Masonry Supplier: Brock White; Lafarge Canada Inc.

The 2nd phase of residences at the Ambrose University College in Calgary used a mixture of buff and grey split face Tyndall stone laid in random lengths to create a durable student housing facility.



CALGARY TEMPLE

Owner: The Church of Jesus Christ of Latter-Day Saints
Architect: Abbarch Partnership Architects
General Contractor: Kepco+
Masonry Contractor: Brxton Construction LP
Masonry Supplier: Brock White
Engineer: Picco Engineering

In the NW community of Royal Oak, a new 33,000 square foot Latter-Day Saints Temple was built with a view overlooking Downtown Calgary, the Bow River Valley and the Rocky Mountains. The exterior comprised of 44,000 square feet of granite. The granite cladding was used to line the stair railings on the East & South elevations. Granite cladding was also used for the benches around the perimeter of the Temple, fence posts, planters, and strategically placed pieces in the sidewalks and at the thresholds at the entrances to the Temple.

**CHURCH OF JESUS CHRIST LATTER
DAY SAINTS**

Owner: President of the Lethbridge Stake
Architect: GDG Architectural Group
General Contractor: United Construction Company Inc.
Masonry Contractor: Brxton Construction LP
Masonry Supplier: I-XL Masonry Supplies; Cast Supply Inc.

This project combines the use of 9,500 sq ft of Brick Veneer and 1,500 lin ft of cast stone. This project uses the combination of the two products for great detailing at all openings and entries to give it the old vintage look of churches of old. The colors chosen give it a warm and soothing feel from all elevations when looking at it from the street.





CRANSTON CBE K-4

Owner:	BBPP Alberta Schools Limited
Architect:	GEC Architecture
General Contractor:	Bird-Graham Schools a Joint Venture
Masonry Contractor:	Brxton Construction LP
Masonry Supplier:	Expocrete Concrete Products Ltd.
Engineer:	Protostatix Engineering Consultants Inc.
Supplier:	Brock White

The project consisted of exterior colored split faced concrete block and standard concrete block for the interior gym and washrooms. This school is one of the three P3 schools Brxton completed the masonry work for in Calgary.

CRANSTON CSSD K-9

Owner:	BBPP Alberta Schools Limited
Architect:	GEC Architecture
General Contractor:	Bird-Graham Schools a Joint Venture
Masonry Contractor:	Brxton Construction LP
Masonry Supplier:	Brock White
Engineer:	Protostatix Engineering Consultants Inc.
Supplier:	Expocrete Concrete Products Ltd.

School in Southeast Calgary which consisted of the supply and installation of block veneer and interior block partitions.

Concrete Block - 10, 15, and 20 cm
Splitface Concrete Block - 10 and 20 cm



ELEVATION PLACE

Owner:	Town of Canmore
Architect:	Gibbs Gage Architects
General Contractor:	Graham Construction and Engineering LP
Masonry Contractor:	Brxton Construction LP
Masonry Supplier:	Brock White
Engineer:	SNC-Lavalin / Wiebe Forest Engineering

The design intent of Elevation Place (Town of Canmore's Multiplex) was a direct architectural response to its surrounding geography. The epic and awe inspiring Rocky Mountains are reflected in the structure's form, which rise against each other like sheared mountain faces.

Masonry played a vital role in articulating the design

intent as well as the functionality of the building. Black and brown Rundle stone were used on both the interior and exterior components of the building. Rundle stone was chosen for a number of reasons; first because of its timelessness.

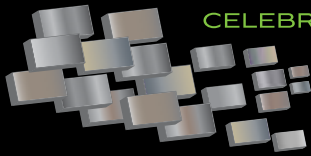
Secondly, Rundle Stone is inherent to the mountains as all of the stone used for Elevation Place was extracted from the Thunder Stone Quarry. Furthermore, due to the building's strong relationship to the mountains, the alternate course of the black ledge stone and the brown field stone was meant to reflect the stratification and layering which characterize the Rockies. The building suggests a strong sheared base of stone from which the Bow Valley forest emerges, all of which gets topped by these dramatic snow drift planes.

ELLERSLIE FIRE STATION

Owner:	The City of Edmonton
Architect:	Architecture Arndt Tkalcic Bengert
General Contractor:	Stuart Olson
Masonry Contractor:	Scorpio Masonry (Northern) Inc.
Masonry Supplier:	Expocrete Concrete Products Ltd.; Cast Supply Inc.

On the exterior of the building, red brick was used throughout the design of the firestation, offsetting the other building materials used. On the interior, concrete block was used in the construction for maximum durability.





**GRANT MacEWAN ROBBINS HEALTH
LEARNING CENTRE**

Owner: The Board of Governors of Grant MacEwan University
General Contractor: Clark Builders
Masonry Contractor: Scorpio Masonry (Northern) Inc.
Masonry Supplier: I-XL Masonry Supplies ; Expocrete Concrete Products Ltd.
Consultant: Stantec Consulting Ltd.

Several colours of brick were used in the construction of this building. The straight lines of the red brick on the west side of the building offer a strong contrast to the curving glass on the east of the east side of the building.

**JEAN BAPTISTE SEWEPAGAHAM
ELEMENTARY SCHOOL**

Owner: Little Red River Cree Nation / Aboriginal Affairs and Northern Development Canada
Architect: A&E Architectural & Engineering Group Inc.
General Contractor: Jen-Col Construction Inc.
Masonry Contractor: K.Hansen Masonry Ltd.
Masonry Supplier: Cast Supply Inc.; Expocrete Concrete Products Ltd.
Engineer: Williams Engineering Canada
Mechanical Engineering Consultant: Stantec Engineering

Brick and concrete blocks were chosen for a variety of reasons, including their rich character, thermal mass, low maintenance and sustainability. Due to the isolation factor of this school, brick masonry was the natural choice to create an inviting, warm, spiritual and durable facility that will stand the test of time.

The choice to use masonry was strengthened by the fact that masonry outperforms other wall systems in dynamic heating and cooling conditions, a crucial factor in designing facilities in the north, where the only heating source is a propane storage facility. Brick masonry gave us the flexibility and adaptability to achieve visual unity and uniformity by creating smaller and un-intimidating building components suitable in scale to young learners.



MAISON SENIOR LIVING

Owner: Maison Senior Living
Architect: NORR Architects Engineers Planners
General Contractor: Norson Construction
Masonry Contractor: Bear Stone Masonry
Masonry Supplier: I-XL Masonry Supplies; Lafarge Canada Inc.
Engineer: MMP Structural Engineering
Business Partner: Bear Stone Masonry

Maison is an assisted-living seniors institute situated in the beautiful Britannia area right off Elbow Drive. This highly visible location required a strategically organized and integrated design. Large amounts of structural

blocks were added to the stairwells, elevator shafts, and were heavily reinforced to add structure to the building. Traditional but somewhat modern grey brick was tastefully designed and integrated with stucco, combined with a copper accented fireplace being the wow factor and hub of this building. These elements influenced the layout and massing of the building and selection of the materials and finishes. The brick unifies the elements of the design. The building is simple in form. The use of the brick on the exterior tastefully reinforces the relationship between the soft natural landscaping and the exterior elements, making this a warm and welcoming building for all to enjoy into our later years.

**MEADOWS COMMUNITY
RECREATION CENTRE AND LIBRARY**

Owner: The City of Edmonton
Architect: Group2 Architecture Interior Design Ltd.
General Contractor: PCL Construction Management Inc.
Masonry Contractor: Scorpio Masonry (Northern) Inc.
Masonry Supplier: Cast Supply Inc.; Expocrete Concrete Products Ltd.

Dark iron spot brick is used on the lower portion of the building to provide a dark durable base. The dark brick is offset by the white fiberglass reinforced concrete panels above.

Masonry is also used to differentiate the various volumes of the building. For example at the arenas, the brick base wraps around the west facade to become the full height cladding on this face which differentiates it from the aquatics and gym volumes along the west side. On the west side of the aquatics, glazed brick is used to provide a punch of texture and colour though an abstract pattern that resembles ripples in the water.

On the building interior painted standard concrete masonry units are used in areas such as the arena dressing rooms, aquatics and gym change rooms for maximum durability. Along with these, Architectural Masonry units such as ground face concrete block are used for durability but also provide an integral finish resembling terrazzo that punctuates the public areas like the gymnasium.





ALBERTA'S BEST SELECTION OF MASONRY PRODUCTS



Brock White is **YOUR SOURCE** for quality masonry products from top manufacturers. Visit ca.brockwhite.com/masonryproducts to learn more.

- Cultured Stone®
- Pangaea Natural Stone
- Rock It Natural Stone
- Summit Brick
- Buechel Stone
- Arriscraft Building Stone
- Mutual Materials Brick
- Cleveland Quarries
- Tyndall Stone
- Glacier Stone
- Robinson Brick
- Thunderstone Quarries

BROCKWHITE
CONSTRUCTION MATERIALS

Calgary

2703 - 61 Avenue SE
Calgary, AB T2C 4X3
403-287-5889 1-877-287-5889

Edmonton

12835 170 Street
Edmonton, AB T5V 1L8
780-447-1774 1-800-724-1774

HELPING BUILD YOUR SUCCESS

www.BrockWhite.ca



POCKAR

Group of Companies



*Brick, Block
& Stone*



*Highrise
Construction*



Hydro-Mobile Scaffolding

POCKAR MASONRY LTD.

Since 1956



Restoration Services

403.276.5591

www.pockargroup.com

4632 - 5 Street N.E.
Calgary, AB T2E 7C3



MOUNT ROYAL COLLEGE CENTRE FOR CONTINUOUS LEARNING

Owner: Mount Royal University
 Architect: Stantec Architecture Ltd.
 General Contractor: PCL Construction Management Inc.
 Masonry Contractor: Brxton Construction LP
 Masonry Supplier: I-XL Masonry Supplies
 Engineer: Stantec Consulting Ltd.

The Mount Royal University for Continuous Learning project consisted of 20cm concrete block work on the interior of the building and giant brick veneer in a stack bond pattern with brick header feature walls.

MOUNT ROYAL COLLEGE – SCIENCE AND TECHNOLOGY EXPANSION

Owner: Mount Royal University
 Architect: Stantec Architecture Ltd.
 General Contractor: PCL Construction Management Inc.
 Masonry Contractor: Brxton Construction LP
 Masonry Supplier: I-XL Masonry Supplies
 Supplier: Brock White; Fero Corporation

The Science and Technology Expansion project consisted of 200mm concrete block and giant brick veneer with two courses of soldiers.



NAKODA ELEMENTARY SCHOOL

Owner: Stoney Education Authority
 Architect: The Workun Garrick Partnership Architecture and Interior Design Inc.
 General Contractor: Dawson Wallace Construction Ltd.
 Masonry Contractor: Gunther's Masonry Construction Ltd.
 Masonry Supplier: Expocrete Concrete Products Ltd.
 Engineer: Protostatix Engineering Consultants Inc.
 Mechanical Engineers: Hemisphere Engineering Inc.
 Electrical Engineers: JO Engineering Inc.

The new 4,199 m² Nakoda Elementary School is designed to provide a contemporary connection between the Stoney (Nakoda) First Nations and the surrounding Rocky Mountains and Bow River Valley. Many of the forms throughout the facility are architectural expressions and abstractions of cultural elements important in the Stoney (Nakoda) First Nation culture.

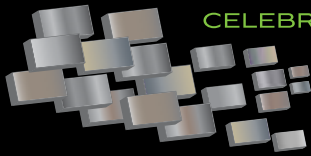
The openness of the interior spaces, highlighted by the stone accents, is intended to bring the Rocky Mountain landscape indoors. Designed to achieve LEED Gold Certification, the school has various sustainable features including significant energy and water savings, exemplary fresh air, a student recycling room, and abundant natural light and ventilation.

SARAH THOMPSON SCHOOL

Owner: B2L Partnership
 Architect: Gibbs Gage Architects
 General Contractor: Bird-Graham Schools a Joint Venture
 Masonry Contractor: Brxton Construction LP
 Masonry Supplier: Expocrete Concrete Products Ltd.
 Engineer: TRL & Associates
 Supplier: Brock White

The Sarah Thompson School project in Langdon, AB consisted of integrally colored concrete masonry units in a variety of textures, patterns and colors. The school also had a gymnasium that was built with loadbearing 12" block.





EDUCATIONAL/INSTITUTIONAL



SOUTH HEALTH CAMPUS

Owner: Alberta Health Services
Architect: Kasian Architecture Interior Design and Planning Ltd
General Contractor: EllisDon Construction Services Inc.
Masonry Contractor: Pockar Masonry Ltd.
Masonry Supplier: Arriscraft; Lafarge Canada Inc.

The design team settled on a Sandstone appearing rusticated Arriscraft cultured stone as providing both the aesthetic and technical features of longevity and constructability desired for the facility as well as connecting the building to the landscape and historic past.

The use of the masonry towers as the vertically pronounced corners of the facility provides a substantive framework within which the lighter, lyrical aluminum panel colors and ephemeral transparent glass are allowed to float without letting the building dissolve and disappear into the surrounding land and skyline. The natural aesthetic strength and feel of the masonry, bookends the building's playful and people-orientated features and holds it to the earth while providing the structural framework within which all of the other building features and functions are encouraged to flourish. Thus, the use of masonry becomes critical for projecting all of the aesthetic and functional clarity of the facility while at the same time creating the connections to the natural southern Albertan landscape as well as the historical Alberta past.

ST. MARY'S PARISH

Owner: St. Mary's Parish
Architect: The LeBlond Partnership
General Contractor: Golden Triangle Construction
Masonry Contractor: Pockar Masonry Ltd.
Masonry Supplier: I-XL Masonry Supplies
Engineer: Williams Engineering

St. Mary's Parish is a Catholic Church located in Cochrane, Alberta and was conceived in two phases. The first phase was completed in 2006, and includes the Entry, Gathering Space, Day Chapel, Church Hall, and Administration areas. The Hall was developed with the intention of using the area as the Worship Space while funding for the second phase is established.

Masonry was the natural choice for St. Mary's Parish, representing the structure's longevity in the community. The formal entrance marries the layered brick arch and bell tower into one entity of resounding permanence.

Even with the established formality of the main entrance it was important to impress upon visitors a sense of warmth and welcome. This was achieved with the layered masonry archway, which creates protective depth as you enter the church, and the colour selection of the masonry. The entrance is constructed of brick masonry that is notably lighter and smaller in scale than that of the flanking Day Chapel and administration wing. These choices were made to ensure that the entrance stood out in order to give visitors an uplifting and bright reception.



ST. MICHAEL CATHOLIC CHURCH

Owner: St. Michael Catholic Community
Architect: Wood Parker Architects
General Contractor: Geneis Building Corporation
Masonry Contractor: Brxton Construction LP
Masonry Supplier: Coronado Stone Products; Brock White

This project consisted of splitface concrete block, veneer cultured stone, interior stone work and two curved entry feature walls and columns.

STRATHCONA COUNTY EMERGENCY NO. 6

Owner: City of Sherwood Park
Architect: S2 Architecture
General Contractor: Krawford Construction
Masonry Contractor: K.Hansen Masonry
Masonry Supplier: I-XL Masonry Supplies; Expocrete Concrete Products Ltd.

The County of Strathcona and the Strathcona Fire Department engaged S2 to programme, plan and develop the design for the new 55,000 sq ft Strathcona County Training and Emergency Services Station No. 6. This is a fully functioning response Fire Station and Fire Training

Facility connected to a fully functioning Emergency Services Response Station (Fire / EMS).

Masonry was the natural material and red brick was the natural colour to highlight the historic and traditional nature of the building. Masonry arches at the overhead doors, articulated massing, corbelling and refined brick coursing all lends itself to a warm, traditional and obvious "fire station" building facade.

The design aesthetic and the masonry material helped in many areas of the building design, not the least of which was for its visual appeal, but also for its robustness and durability to accommodate many of the fire and training features needed throughout the building.





**WESTERN CANADA HIGH SCHOOL
PARTIAL MODERNIZATION TP#3**

Owner: Calgary Board of Education
Architect: DIALOG
General Contractor: Clark Builders
Masonry Contractor: Brxton Construction LP
Masonry Supplier: Cathedral Stone Products Inc.

Supply and install of precast sills, caps and copings.



*We proudly support the celebration
of Masonry in Alberta.*

780-438-6009

www.bricksmiths.ca

This is Expocrete.



Expocrete, an Oldcastle company has built a reputation of commitment to excellence by providing products and services that facilitate the success of your projects throughout Alberta. Reliability, safety and integrity are built into every customer relationship.

Our masonry solutions are the preferred choice among masonry contractors, developers, builders, architects and designers alike and we are proud of our standing as one of the most admired companies in our industry.



Expocrete
an Oldcastle® company

Proud sponsor of the 2015 Alberta Masonry Awards

expocrete.com

THE LEGACY OF UNFORGETTABLE MASONRY

BY FRANK ALBO

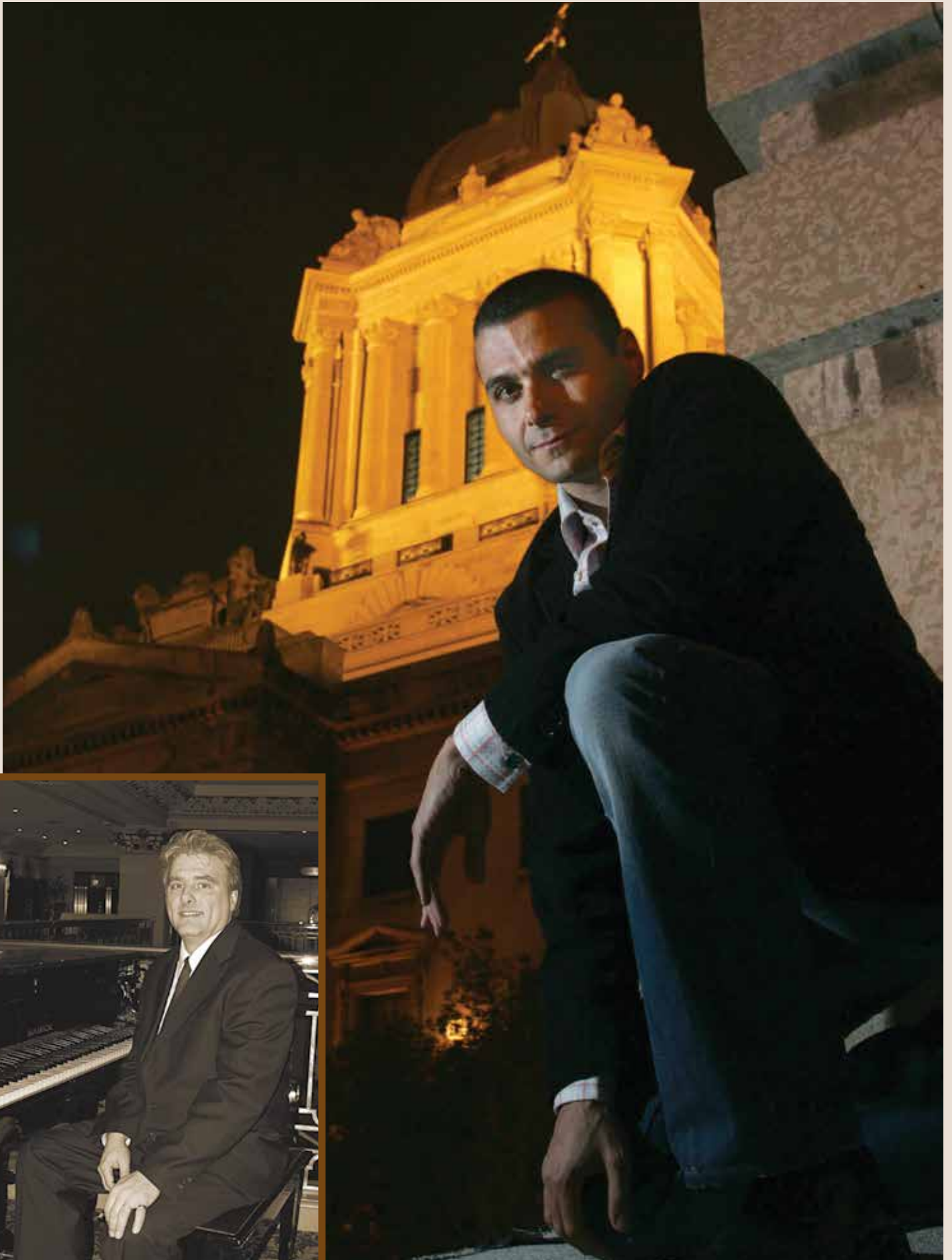
Ever since monolithic blocks of stone were raised in a giant circle in Wiltshire, England nearly 5000 years ago, humankind has marveled at the triumph of masonry construction.

Today, Stonehenge appears more like a primitive relic of our prehistoric past, rather than a breakthrough in technical engineering and one of the world's most enduring symbols of originality, innovation, and progress. With all the advantages of iron and steel in

modern construction and with the cost and allure of concrete and glass, it would appear that masonry has lost its pride of place in the legacy of architecture. But this is not true and I am going to set out to prove it in my keynote address at the Alberta Masonry Design



*Facing page: Frank Albo at the Alberta Legislature
Inset: Jeffrey Dolovich, accompanying pianist*





Awards. My talk will touch upon thousands of years of outstanding masonry in Alberta, from enigmatic Medicine Wheels in the southwest to the breathtaking Canadian Pacific Railway Pavilion in Calgary. But more than just a celebration of excellence and innovation in the use of stone, this address will take the audience on an odyssey through architectural time, illuminating the symmetrical perfection of Classical temples, the lost secrets of ancient Freemasonry, and the bold visions of urban renewal, which characterize the cityscapes of Edmonton, Calgary, and Red Deer. Supplemented by an unforgettable musical score by the piano maestro, Jeffrey Dolovich, my talk invites us to see how masonry architecture has served as the bedrock of world cultural history, from the pyramids of Egypt to the Clock Tower of Lethbridge. Whether a prehistoric tomb or a soaring skyscraper, masonry has ignited the human heart and promoted a sense of wonder, awe, and inspiration unmatched by any other building material. But make no mistake; the legacy of masonry in Alberta is not solely for the academically inclined, it touches upon a fascinating treasury of human achievement, from the cosmology of the Oxbow Peoples to the boom-and-bust ambitions for oil, gas, and energy. I invite you to sit back, relax, and be edified while entertained, hum a catchy song while fine-tuning your mind, and take part in an exhilarating history of masonry like never told before.



Proud Sponsor of the 2015 Masonry Design Awards

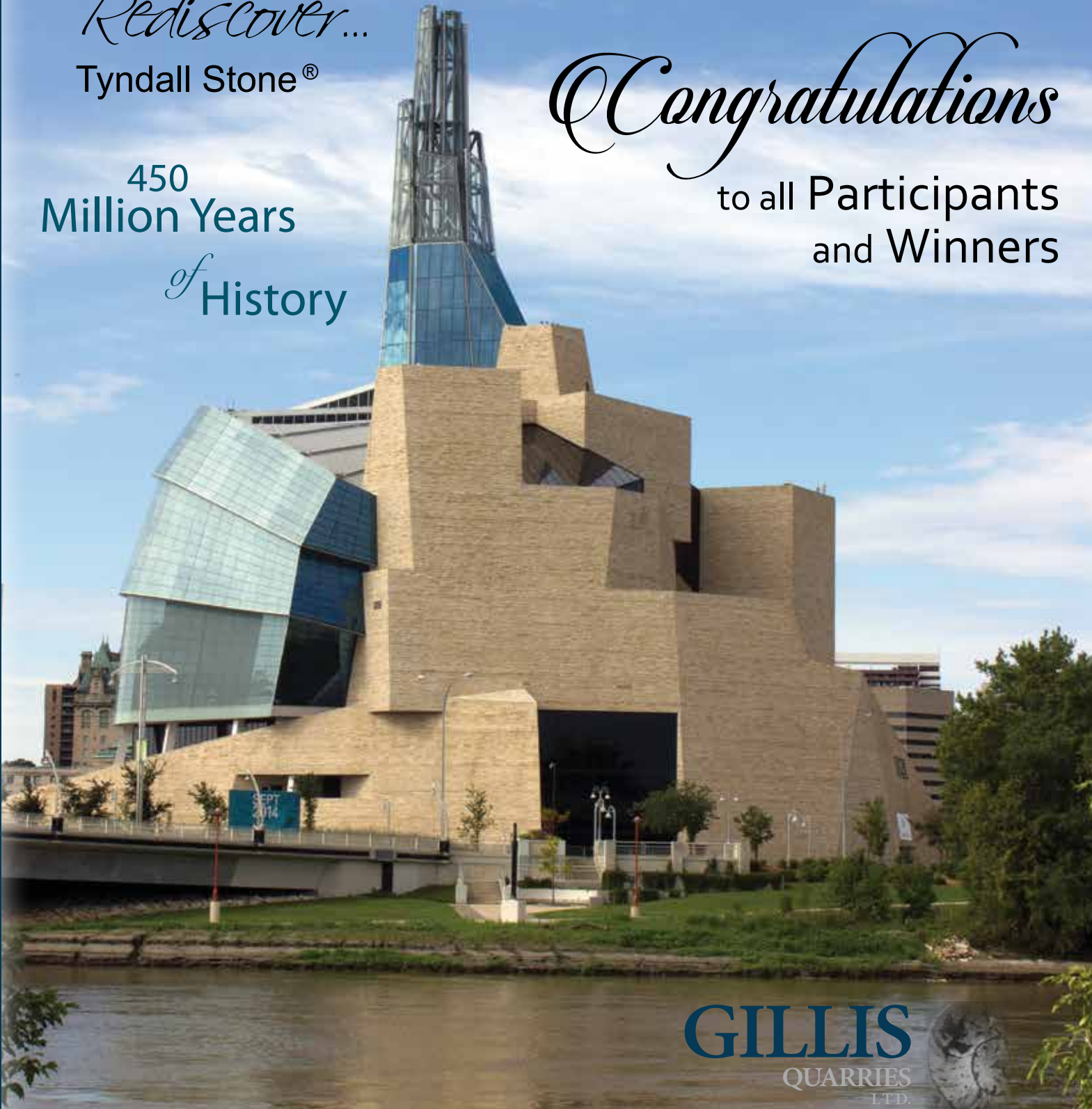
Rediscover...

Tyndall Stone®

450
Million Years
of History

Congratulations

to all Participants
and Winners



GILLIS
QUARRIES
LTD.



AWARD OF EXCELLENCE



TRIBECA

Owner: Bucci Developments
 Architect: NORR Architects Engineers Planners
 General Contractor: Chandos Construction
 Masonry Contractor: Pockar Masonry Ltd.
 Masonry Supplier: Cast Supply Inc.
 Engineer: Glotman Simpson Consulting Engineers

Located in one of Calgary's oldest inner-city communities, the design of this four-storey wood frame condominium was developed to attract a diverse demographic maintaining the vitality of the neighbourhood. Durable exterior finishes were chosen including brick, cement board panels and heavy timber accents to reflect existing community materials while providing a contemporary building design. Units facing the street have inviting gateways to ground floor entrances with brick posts and gate features. In addition, brick is featured on all street oriented columns. This creates a rhythm of quality materials enhancing the street experience while keeping the brick application economical. Two colour tones of brick were used to create texture along with a basket weave detail at the light fixture level. The overall expression of Tribeca is one of quality and serenity through the use of rhythm and quality materiality.

AWARD OF MERIT



WATERFRONT – PHASE 1A & 1B

Owner: Anthem Riverfront Land LP
 Architect: NORR Architects Engineers Planners
 General Contractor: Anthem Riverfront Land LP
 Masonry Contractor: Brxton Construction LP
 Masonry Supplier: Expocrete Concrete Products Ltd.
 Engineer: John Bryson & Partners

The exterior facade consisted of 11,000 square feet of 200mm and 300mm of sandstone. The interior included 3,500 concrete blocks.

HONOURABLE MENTION

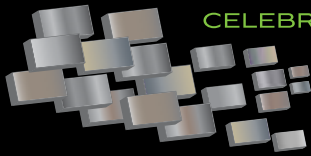


THE DRAKE

Owner: Grosvenor
 Architect: BKDI Architects
 General Contractor: Axiom Formwork Construction Inc.
 Masonry Contractor: Aurora Masonry Ltd.
 Masonry Supplier: I-XL Masonry Supplies

With the Drake being located in Calgary's beltline district, the building had to transition between commercial buildings, apartment buildings and single family residential. This was accomplished by

using Meridian sized bricks to give the building a modern look while still blending in with the neighbourhood. The design of stack bond and deep rich brown color gives the building a unique finish.



MULTI FAMILY RESIDENTIAL



LOFTS ON FIRST

Owner: Timbercreek Asset Management
 Architect: Casola Koppe Architects
 General Contractor: UPA Construction Group
 Masonry Supplier: Brock White
 Engineer: TRL & Associates

We replaced original brick wall along 1st Street with Tyndall with a concrete cap, and provided new Tyndall stone at both residential entrances and commercial units at grade. The Tyndall helped define the entrances, and created an aesthetic which is appropriate for residential buildings, while maintaining an urban context.

LUMINO BUILDING A & B

Owner: The City of Calgary - Building A;
 Kanas Corporation - Building B
 Architect: Casola Koppe Architects
 General Contractor: Kanas Corporation
 Masonry Contractor: Pockar Masonry Ltd.
 Masonry Supplier: Arriscraft; Lafarge Canada Inc.
 Engineer: Tower Engineering
 Mechanical / Electrical: Hemisphere Engineering

A combination of split and smooth face 190 x 380 blocks were utilized to create a prominent 2 to 4 storey podium facing 2 streets and a plaza podium.



MAISON SENIOR LIVING

Owner: Maison Senior Living
 Architect: NORR Architects Engineers
 Planners
 General Contractor: Norson Construction
 Masonry Contractor: Bear Stone Masonry
 Masonry Supplier: I-XL Masonry Supplies; Lafarge
 Canada Inc.
 Engineer: MMP Structural Engineering
 Business Partner: Bear Stone Masonry

Maison is an assisted-living seniors institute situated in the beautiful Britannia area right off Elbow Drive. This highly visible location required a strategically organized and integrated design. Large amounts of structural

blocks were added to the stairwells, elevator shafts, and were heavily reinforced to add structure to the building. Traditional but somewhat modern grey brick was tastefully designed and integrated with stucco, combined with a copper accented fireplace being the wow factor and hub of this building. These elements influenced the layout and massing of the building and selection of the materials and finishes. The brick unifies the elements of the design. The building is simple in form. The use of the brick on the exterior tastefully reinforces the relationship between the soft natural landscaping and the exterior elements, making this a warm and welcoming building for all to enjoy into our later years.

McPHERSON PLACE

Owner: Bridges Attainable Housing
 Architect: BKDI Architects
 General Contractor: Devitt & Forand
 Masonry Contractor: Pockar Masonry Ltd.
 Masonry Supplier: Cast Supply Inc.
 Engineer: TRL & Associates

McPherson Place is a 6-storey, 160 unit attainable housing development in Calgary. As a new development in 'The Bridges' (inner city urban renewal), there is an architectural requirement for 20% minimum masonry on the exterior. While this is 'Attainable Housing', it was important that the

design and quality of this building be in context with the surrounding market residential. The use of brick provides a quality aesthetic.

Brick is used to enhance the buildings contemporary character. As such, brick detailing, colour and finish was kept simple and clean, without historical reference. A 2-storey masonry base wraps around the building, which fronts onto 3 streets. From the viewpoint of pedestrian environment, the brick provides a sense of permanence and quality.

Construction costs are critical to the viability of attainable housing, and their budgets require economic materials. In this case, the quality of the building was achieved without sacrificing the budget.





NEXT

Owner: Bucci Developments
Architect: NORR Architects Engineers Planners
General Contractor: Gauvin 2000 Construction
Masonry Contractor: Brxton Construction LP
Masonry Supplier: I-XL Masonry Supplies
Engineer: Glotman Simpson Consulting Engineers

The specific brick used at Next is 654 Everest Graitex which has an earthy, beige, gray color and a slightly coarse texture. This color and texture, not as commonly used as typical red brick, differentiates Next from other traditional buildings. The Graitex also bestows a more

contemporary look to the building. The detailing of the brick was carefully selected to look simple, yet contribute as a perfect complement to the building materials. In addition to supplementing the building exterior, the amount of Graitex used fits proportionally to the entirety of the building.

The texture created by the pattern of the Graitex brick garners the attention of local traffic, both on foot and in vehicles. Next was designed with permanence and durability in mind. Consequently, the use of 654 Everest Graitex exterior brick on this condominium allows it to assimilate into the surrounding neighborhood while maintaining an understated prominence among its surroundings.

THE GALA IN APPLEWOOD

Owner: Applewood Partnership Ltd.
Architect: NORR Architects Engineers Planners
General Contractor: Applewood Development Ltd.
Masonry Contractor: Bear Stone Masonry
Masonry Supplier: Brock White
Engineer: Wiebe Forest Engineering

A stunning building that has an aesthetic appeal combined with the low maintenance qualities of a stone veneer. The intent is to have a long lasting and maintenance free building. There are 2 elevated shafts and a firewall to add a structural element and fireproofing to the building. The use of stone in this project is a

consistent element that runs through the exterior of the Gala building. The entire bottom half of the building and all deck columns are beautifully clad in a stone veneer. The use of masonry is contrasted with siding and stucco. These design elements and finishes mesh seamlessly. The facade creates interest and the stone adds texture which articulates the building's form. Stone was laid in a dry stack with a dark charcoal grout which enhances the look of the building. Gala has a large central courtyard for all residents to enjoy, and the masonry ties in well with all the landscaping. It's refreshing to see a large amount of stone on a multi-family residential project. The masonry element adds a timelessness and grandeur that makes this building shine.



VICTORIA CROSS TOWNHOMES

Owner: Homes by AVI Urban (Currie)
Architect: Homes by AVI Inc.
General Contractor: Homes by AVI Urban (Currie)
Masonry Contractor: Aurora Masonry Ltd.
Masonry Supplier: I-XL Masonry Supplies

The Victoria Cross project in Currie Barracks features multiple blocks of 4 unit attached homes each with a unique style and color of brick. This allows each owner to have a feeling of living in a single family home within a multi family development. With Currie Barracks being a contemporary urban village, the use of brick was a perfect balance of modern style and timeless permanence.



Glen-Gery

Choose Glen-Gery, America's Premier Brickmaker for 125 years • www.glengery.com

SPEC MIX[®] MORTAR

CONSISTENT PERFORMANCE

WITH UNLIMITED

COLOUR OPTIONS

AVAILABLE NATIONWIDE IN
ALL PROVINCES OF CANADA.
MEETS ALL CSA STANDARDS.



SPEC MIX offers a full range of standard and custom coloured mortar products or the professional application of brick, block and stone.



SPEC MIX[®] Coloured Mortar is the reliable, consistent solution to guarantee your masonry building meets every expectation. Designers, owners and contractors can choose from our line of (10) nationally available standard colours, or identify a unique custom colour that our technicians will match for samples and your final approval. To achieve the specified colour, all mortar constituents including pigment are preweighed to ensure the exact formulation is factory preblended and packaged in either 80 lb. or 3,000 lb. bulk bags for our jobsite silo systems. For quality and consistency, SPEC MIX Coloured Mortar delivers on every project, every time!

WWW.SPECMIX.COM

© 2015 SPEC MIX, INC.



604-856-7976 403-279-8189
BRITISH COLUMBIA ALBERTA

Target Products Ltd. Is your manufacturer for SPEC MIX products and silo delivery systems in Western Canada.

SPEC MIX[®]

AWARD OF EXCELLENCE



LEGISLATURE BUILDING MAJOR AND MINOR DOME ROOF REPLACEMENT

Owner: Alberta Infrastructure
 General Contractor: Brxton Construction LP
 Masonry Contractor: Brxton Construction LP
 Masonry Supplier: Boston Valley Terra Cotta
 Engineer: Building Science Engineering
 Masonry Expert: BBStek Design

The major and minor domes on the Edmonton Legislature Building were originally clad in terra cotta, but were constructed without a barrier to water. As a result, both domes experienced water ingress to interior space over the life of the building.

In order to install a waterproofing membrane on both domes, the existing terra cotta was removed and new terra cotta was installed replicating the original in profile, pattern, shape, size, texture and colour. The construction consisted of new ashlar terra cotta, an air space to facilitate drainage and drying, urethane spray foam insulation to provide thermal resistance, and a bituminous waterproofing membrane over a new shotcrete shell supported by the original primary structural steel framing which was structurally repaired and retained.

AWARD OF MERIT



WESTERN CANADA HIGH SCHOOL PARTIAL MODERNIZATION TP#3

Owner: Calgary Board of Education
 Architect: DIALOG
 General Contractor: Clark Builders
 Masonry Contractor: Brxton Construction LP
 Masonry Supplier: Cathedral Stone Products Inc.

Supply and install of precast sills, caps and copings.

HONOURABLE MENTION



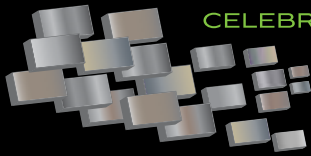
BISCUIT BLOCK

Owner: Royop Development Corporation
 Architect: Abugov Kaspar Architecture Engineering Interior Design
 General Contractor: Graham Construction and Engineering LP
 Masonry Contractor: IB Jensen Masonry Ltd.
 Masonry Supplier: Brock White
 Engineer: Williams Engineering Canada

By restoring the Biscuit Block to its original glory, a piece of Calgary's history has been preserved. Through this preservation, new desirable tenant space has been added once again into the warehouse district. An additional two storeys has been added to the original structure. In order to celebrate the heritage of the existing building, the addition was designed to differentiate between old and new. The additional

floors and new entrance lobby step back from the original building, showcasing the historic front façade. The material choice of metal and glass was very deliberate to create an addition that complimented the existing structure, but clearly differentiated between new and old.

What had become an aging building in disrepair, the Biscuit Block has gained a second chance to shine.



ALBERTA HOTEL

Owner: Five Oaks Inc.
 Architect: Dub Architects Ltd.
 General Contractor: TC Biggs Construction Ltd.
 Masonry Contractor: Remo's Masonry
 Masonry Supplier: I-XL Masonry Supplies
 Engineer: Protostatix Engineering Consultants Inc.

The Alberta Hotel, built in 1903, but demolished in 1984. The original bricks and sandstone from the hotel were marked with painted numbers then tagged for reassembly. Bricks and sandstone from the nearby Rothesay Apartments was also salvaged and stored for 25 years. In 2009, Five Oaks Inc. and Dub Architects proposed to

reconstruct the Alberta Hotel and the Rothesay facades approximately twenty feet west of the original hotel location.

All stone was laid out and puzzled together on the floor of a large rented warehouse. Grout colour and joint treatment required experimentation so that the original character was achieved. Initials and names carved into the stone over time were carefully protected and retained. The eastern half of the facade along Jasper Avenue was faithfully reconstructed using new brick similar in colour to the original brick. The original demolished building had wood-frame construction with small spaces on a mixture of levels. The new building was steel frame construction with clear span spaces.

ALBERTA LEGISLATURE - EAST & WEST STAIRS

Owner: Government of Alberta, Alberta Infrastructure
 General Contractor: Scorpio Masonry (Northern) Inc.
 Masonry Contractor: Scorpio Masonry (Northern) Inc.
 Engineer: Building Science Engineering

The east and west stairs on the legislature building were originally installed on a sand and cement base with no drainage detailing incorporated. This caused the granite treads and risers to move after water infiltrated the system. The new design was to remove the granite pieces and deteriorated mortar bed, install a new thermofusible membrane, reinstall granite on pads to allow moisture out of the system. New stainless components were also used for drainage and connecting the granite to the original concrete below.



FIREPLACE MATCO'S RANCH

General Contractor: Gord White
 Masonry Contractor: Gord White
 Masonry Supplier: Gord White

Originally the owner wanted a fireplace facing that was built using stone from his ranch property. This was discussed with an installer who informed him there was no suitable stone on his Ranch property to use but not to worry because he had a very suitable stone and to leave it up to him. The client was not satisfied with the results. He heard through a contact that I work mainly with local stone. I jumped at the opportunity and re-did the facade facing in full bed using stone taken from the hill right beside his cabin on the Ranch property. The original hearth

was not removed. The client was so happy with the final results he is now planning to build a new house on the Ranch so he can have a large all masonry ranch ford style stone fireplace and his own stone on the ranch house.

GARNEAU LAMP

Owner: The City of Edmonton, Sustainable Development
 Masonry Contractor: Scorpio Masonry (Northern) Inc.

The Garneau Improvement Club had constructed a rustic light standard in the spring of 1929. With a field stone base and concrete cap, it was set in a small park circled by field stone and planted with flowers. The words "The Garneau" were cast into the concrete cap, which in turn was surmounted by a cluster of four light brackets with a central coloured light. The Edmonton Bulletin reported: "Marked contrast is seen in its appearance today with that of a year ago. Frank Norbury was approached by a group of Garneau residents with an unusual project for him to design as he was an accomplished sculptor."

Lighting of the High Level Bridge, and especially of the south end, was becoming a community concern during 1929, therefore the need for the lamp.





LE MARCHAND MANSION

Owner: Harvard Property Management Inc.
 General Contractor: Scorpio Masonry (Northern) Inc.
 Masonry Contractor: Scorpio Masonry (Northern) Inc.
 Consultant: Read Jones Christoffersen Ltd.

The repairs and restoration program of this historically significant structure entailed the rebuild of jack arches, repointing, and dismantle and reconstruction of the 2 easterly columns supporting the stairs.

LOFTS ON FIRST

Owner: Timbercreek Asset Management
 Architect: Casola Koppe Architects
 General Contractor: UPA Construction Group
 Masonry Supplier: Brock White
 Engineer: TRL & Associates

We replaced original brick wall along 1st Street with Tyndall with a concrete cap, and provided new Tyndall stone at both residential entrances and commercial units at grade. The Tyndall helped define the entrances, and created an aesthetic which is appropriate for residential buildings, while maintaining an urban context.



McDOUGALL CENTRE – SANDSTONE REHABILITATION

Owner: Alberta Infrastructure
 Architect: Simpson Roberts Architecture
 General Contractor: Alberta Infrastructure Property Management Branch
 Masonry Contractor: Brxton Construction LP

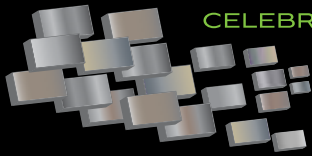
The McDougall Centre Sandstone Rehabilitation project consisted of sandstone removal and replacement with some detailed Jahn repairs, descaling and cleaning some of the upper stones.

RED DEER COLLEGE ARTS CENTRE BARREL VAULT

Owner: Red Deer College
 Architect: Group2 Architecture Interior Design Ltd.
 Masonry Contractor: Scorpio Masonry (Northern) Inc.

The Barrel Vault at Red Deer College is one of the main architectural features of the entire campus. The original building is an Arthur Erickson design. The barrel vault was experiencing water leakage coming into the structure. The design intent was to incorporate a drainage plane behind the brick on top of the existing precast planking. The brick was removed, a new membrane installed, insulation with a drainage profile and a stainless mesh was incorporated into the cavity.





ROTARY PERFORMING ARTS CENTRE

Owner: Town of Okotoks
Architect: Quinn Young Architects Ltd.
General Contractor: Hurst Construction Co. Ltd.
Masonry Contractor: Brxton Construction LP
Masonry Supplier: Brock White
Engineer: BEI Engineering Inc.

For almost a century, the brick church on the corner of Elma Street and Centre Avenue served as a gathering place for the Okotoks community. Although no longer a church, the facility continues to be a gathering place for celebration and inspiration in its new role as the Rotary Performing Arts Centre. Restoration with tyndall stone and terracotta Brick were part of the renovation completed in 2011.

SHEPPARD RESIDENCE – RESTORATION

Owner: Jackie Sheppard
Architect: DeJong Design Associates Ltd.
General Contractor: Waterford Homes Inc.
Masonry Contractor: Brxton Construction LP
Masonry Supplier: Brock White
Supplier: I-XL Masonry Supplies

The original home was built in the early 1900s in the Mount Royal area of Calgary. The owner added on 27,600 brick and various shapes of Sandstone features for deck copings, railings, fireplace and column work. The stone came from the Uno Sandstone Quarry in Spain.



K. HANSEN MASONRY LTD.
(MASONRY CONTRACTORS SINCE 1960)

PROUDLY SERVING ALBERTA, SASKATCHEWAN,
BRITISH COLUMBIA AND TERRITORIES.

11520 - 154 STREET

EDMONTON, ALBERTA

PHONE: (780) 451-0980

FAX: (780) 451-2299

EMAIL: info@khansenmasonry.ca

The background of the entire page is a complex, low-angle perspective of a multi-layered architectural wireframe. It consists of numerous overlapping, semi-transparent rectangular frames in shades of light green and grey, creating a sense of depth and modernity. The lines are sharp and precise, suggesting a digital or futuristic construction.

MASONRY
of the

FUTURE

By Dr. Mark D. Hagel

For thousands of years, masonry has been the building material of choice in many regions, with an infinite number of possibilities of pattern and form. Brick and stone are durable materials that have been used to construct castles and cathedrals, pyramids and great walls, schools and museums, hospitals and high-rises, bridges, roads, and fences.

Although masonry products are often imitated, very few materials are as versatile, and fewer still are as durable. The masonry industry recognized, however, that its products had to become more innovative to compete with emerging cladding systems. Research into such innovations was greatly aided with the establishment of chairs and centres of research excellence at post-secondary institutions to attract top researchers to the field of masonry.

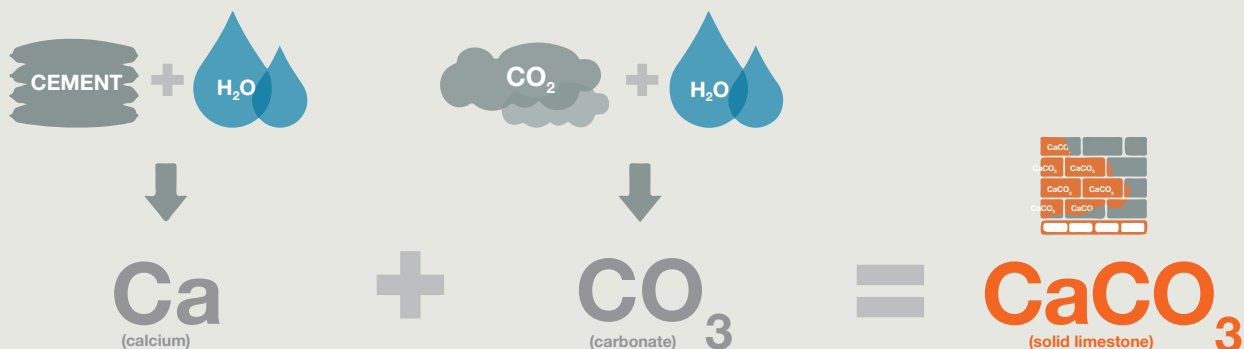
Over the past 15 years, the Canadian masonry industry has created two research chairs at McMaster University and the University of Alberta, respectively, and a Centre for Masonry Design at the University of Saskatchewan. The results have been truly innovative.

At Montreal's McGill University, Dr. Y. Shao is investigating the reduction of carbon dioxide emissions by up to 32 million tonnes annually in North America using carbon dioxide (CO₂) recovered from the flue gas in cement production to cure concrete block and concrete pavers. Carbon cured concrete blocks produce stronger concrete blocks with less shrinkage and reduce the carbon footprint while at the same time reducing their carbon footprint. A similar technology has been brought to market in the form of CarbonCure™ by one of Dr. Y. Shao colleagues.

At the University of Calgary the use of Glass Fibre Reinforce Polymers (GFRP) are being investigated for the retrofit of aging masonry. Spray-applied GFRP-wrapped brick columns experienced a 17 to 20 per cent increase in strength capacity and a 63 per cent increase in strain capacity on concentrically loaded columns. This technology could also be applied to concrete block walls. The GFRP can be spray-applied to unreinforced, ungrouted concrete block walls as a substitute for traditional grouting and steel reinforcement in concrete block foundation walls. The load capacity was more than seven times that of the unsprayed wall and the ease of application of the spray-applied GFRP makes this form of reinforcing an attractive option.

Innovative concrete block products are now available such as insulated concrete block units with embedded rigid insulation achieving R24, and concrete block manufactured using a Biofibre Cement composed of cement and either wood pulp, wheat straw, hemp hurd, or flax shive that are both green and provide an insulation value of R10.

An alternative to glass block has also been created in a new light transmitting concrete block.

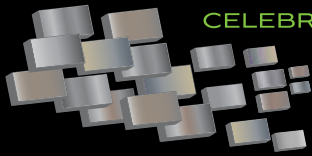




Although the masonry industry continues to compete for market share against less expensive claddings, the benefits of masonry are once again being recognized. Research and education have made masonry more easily accessible for the design professional and, although already a highly green building material, masonry research is leading to even more environmentally responsible characteristics, increased versatility, and more diverse esthetics.

Renewed commitment to improvement of design and construction by the masonry industry through the continued education of masons, education of design professionals, and innovative research keep masonry competitive in its exceptional quality. Although the last two decades have been a difficult time for the masonry industry, the next 10 years could allow the material's myriad of redeeming features to again make it the most attractive choice.





AWARD OF EXCELLENCE



PRIDDIS RESIDENCE

Architect: Lighthouse Studio
 General Contractor: Cana Management Ltd.
 Masonry Contractor: Pockar Masonry Ltd.
 Masonry Supplier: Brock White
 Interior Design: Louise Middleton / Jacqui McFarland
 Landscape Architect: Paterson Design Group Inc.

This classic timber frame home was given a sense of elegance and grace reminiscent of traditional European country houses. This is most evident in the main living room fireplace, where the masonry is designed to reflect an 'old world' feel. The result is a rustic yet elegant composition of sandstone, metal and wood. The Rumsford infrastructure is clad with rough cleft Cleveland sandstone. The opening is detailed with hand carved sandstone medallions and metal strapping. The hearth is a vein cut Cleveland sandstone slab.

Masonry was also used to unify the complex exterior site design, complementing the architecture of the residence. Masonry materials were selected based on the function, aesthetic character, colour and durability. Big Horn Ledge stone was used as the main masonry component and although the same material as the residence, it is used in a more natural pattern without exposed mortar joints providing its own unique character. Used in combination with Flagstone in the outdoor kitchen, sandstone caps on the columns and Adair stone on the stairs and counters, the overall appearance is one of permanence and rugged sophistication.

AWARD OF MERIT



PAYLOR RESIDENCE

Owner: Darren and Tania Paylor
 Architect: Lyndon L. Steinmetz Design
 General Contractor: Howard Thorpe
 Masonry Contractor: Stonestar Rockwerks
 Masonry Supplier: Brock White; I-XL Masonry Supplies
 Stone Supplier: Montana Rockworks
 Refractory Supplier: Buckley Rumford

The exterior walls of the residence are comprised primarily of argillite stone and glass. The stone units were cut top and bottom to provide a strong linear aesthetic to the 26 full masonry columns that support the structure. Over 160 tons of full bed stone was cut and shipped by Montana Rockworks in order to complete the project's masonry scope. The home features two full masonry Rumford fireplaces, as well as a stone hot tub and stone shower in the master

ensuite. In addition, Stonestar Rockwerks precast two solid concrete chimney caps weighing approximately three metric tons apiece which were craned into place. The Montana Rockworks Moose Mountain stone & Birch Creek Brown capping also provides a very pleasing compliment to the surrounding natural beauty of the site.

HONOURABLE MENTION



MISSION HOMES RESIDENCE #6

Owner: Private Residence
 Architect: McDowell & Associates
 General Contractor: Mission Homes
 Masonry Contractor: Jackson Masonry
 Masonry Supplier: Brock White

Custom designed addition by homeowner.



224 BALMORAL MANOR

Architect: Scott Arthur Homes
 General Contractor: New Ground Developments
 Masonry Contractor: Bricksmiths Masonry
 Masonry Supplier: I-XL Masonry Supplies
 Trim Stone Supplier: Brock White

The customer was interested in creating a beautiful home with a timeless facade. The brick we used offers this timeless elegance, with the protection and permanence of a full bed masonry veneer.

The Balmoral area of Sherwood Park offers large lots, in a prestigious area, on which to construct beautiful and unique single family homes. Brick was selected for its elegance and permanence, inspired by the beauty of

classic architecture. On this project, in addition to a full masonry veneer, we used subtle changes in the brick pattern to accent different features in the home. We installed corbelled bricks around all openings to create added depth to the window openings. Tyndall lug sills were used for their color and quality along with Tyndall keystones that were flanked by angled - jack arch bricks. A detailed belt coursing was added to further enhance the look of the exterior at the transition between the two upper stories. Landings of block were faced and trimmed with brick to extend the veneer to most of the vertical facets of the exterior. Other features include an integral brick BBQ, and thin veneer chimney with accent coursing as well. When combined with the modern amenities, this brick home truly results in a unique and inspiring place.

BENTZ RESIDENCE – EXTERIOR FIREPLACE

Architect: Patti L. Swanson Architect
 General Contractor: Barry Bentz
 Masonry Contractor: Brxton Construction LP
 Masonry Supplier: Brock White

This exterior fireplace and barbeque includes the supply and installation of split-face Tyndall stone on the exterior, as well as a concrete block backup including rebar and concrete.



CAUFIELD RESIDENCE FIREPLACE TERRACE

Landscape Architect: O2 Planning + Design Inc.
 Masonry Contractor: Gord White

Masonry was the primary focus of this residential garden terrace in Calgary, Alberta. Inspired by the sedimentary layering and erosional features of the regional foothills landscape, the sinuous form of the main fireplace encloses the upper terrace outdoor living space. The main fireplace with its substantive cantilevered hearth and towering hoodoo-like chimney provide the centerpiece of the space, while the adjoining wing walls enclose a barbeque and outdoor serving area. The upper living terrace steps down

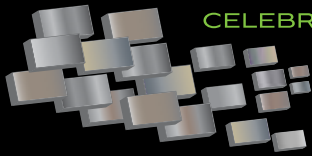
to a lower dining terrace surrounded by masonry planters. In addition to enclosing the living and dining terraces, the vertical sculptural element with its finely detailed layers of sandstone and contrasting rundle stone is the central and most prominent element in the garden below.

GREEN RESIDENCE FIREPLACE AND ENTRY

Architect: PMO Group
 General Contractor: PMO Group
 Masonry Supplier: Alomar Masonry Supplies, H.O. Concrete Products

Stone and masonry was used because of the rugged and rustic mountain settings and will last for generations.





SINGLE FAMILY RESIDENTIAL



HANSEN RESIDENCE

Owner: Alfred and Lorraine Hansen
General Contractor: Ace Lange Homes
Masonry Contractor: Bricksmiths Masonry
Masonry Supplier: Cast Supply Inc.
Rendering Producer: Dawn Laurie Design
Designer: Klar Interior Design

Our client initially requested an all brick exterior but due to the large footprint and architectural details we presented them with an option that included stone to emphasize the entry and flanking window gables. Cast stone window sills were used throughout along with a brick course around the windows. Stone was used on the back wall of the covered deck and also incorporated into three medallions.

The landscaping repeated the stone detail in the retaining wall, two front pillars flanking the entrance sidewalk and an arbor in the backyard (not shown). Beaver Den by Sunrise Stone complements Copper Harbor by the Acme Brick Company and has created a new build home that fits in well with an established community.

KOWALCHUK RESIDENCE

Owner: Fiddlerock Masonry
Masonry Contractor: Fiddlerock Masonry
Masonry Supplier: Brock White

The residence was built in 1977. The original exterior was aluminum siding and stucco. Reclaimed brick had been added to the front exterior in the late 70s'. The residence was built with 2x4 walls allowing only R12 insulation.

It was decided to completely tear off the existing brick facade and the stucco and aluminum siding around the house.

The owner is a masonry contractor and made the decision

to incorporate and show the many benefits that masonry can bring to a new or older homes. Big gains and savings can be made with upgraded vapour barriers and increased R-values. Aesthetically pleasing veneer detail work and lighting effects enhance the veneer and put brick in the best light possible.

Another reason for the care and attention to the work described is that this is the easiest way to have potential clients visit a turnkey masonry enhancement project. The home showcases the beauty of brick and what can be incorporated behind it, all of which will increase the resale value of the home while saving heating costs.



MARTUSHEV RESIDENCE

Masonry Contractor: Boulder Construction Group Ltd.
Masonry Supplier: Kodiak Mountain Stone

Boulder Construction Group installed a large amount of manufactured stone on Kenny Martushev's previous home, and when Kenny built his new home, he wanted much more stone inside the home as well as the exterior. He also wanted an artistic use of stone inside the home, with 2 fireplaces and arches. There was lighting incorporated into the arches, and railings attached to the stone pillars.

MISSION HOMES RESIDENCE #1

Owner: Private Residence
Architect: Homeowner
General Contractor: Mission Homes
Masonry Contractor: Jackson Masonry
Masonry Supplier: Brock White

Custom designed with homeowner.





MISSION HOMES RESIDENCE #2

Owner: Private Residence
 Architect: McDowell & Associates
 General Contractor: Mission Homes
 Masonry Contractor: Jackson Masonry
 Masonry Supplier: Brock White

The residence was designed in the Georgian style using tumbled red brick pavers and limestone accents that give the home an appearance consistent the 100 year old neighborhood

MISSION HOMES RESIDENCE #3

Owner: Private Residence
 Architect: McDowell & Associates
 General Contractor: Mission Homes
 Masonry Contractor: Jackson Masonry
 Masonry Supplier: Brock White; Amico Stone Supply

The residence was designed in the Prairie style with full bed stone columns and accents



MISSION HOMES RESIDENCE #4

Owner: Private Residence
 Architect: DeJong Design Associates Ltd.
 General Contractor: Mission Homes
 Masonry Contractor: Jackson Masonry
 Masonry Supplier: Brock White

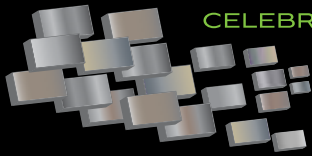
Custom designed with homeowner.

MISSION HOMES RESIDENCE #5

Owner: Private Residence
 Architect: Lundgren & Associates
 General Contractor: Mission Homes
 Masonry Contractor: Jackson Masonry
 Masonry Supplier: Brock White; I-XL Masonry Supplies; Amico Stone Supply

The residence was designed in the Prairie style using charcoal brick and limestone and features a multicourse arch at the front entrance of the home.





MISSION HOMES RESIDENCE #7

Owner: Private Residence
 Architect: McDowell & Associates
 General Contractor: Mission Homes
 Masonry Contractor: Jackson Masonry
 Masonry Supplier: Amico Stone Supply; Brock White

The residence was designed in the Shingle architectural style using limestone for the trim and gardens.

MONTREUX

Owner: Trico Homes Inc.
 Architect: Trico Homes Inc.
 General Contractor: Trico Homes Inc.
 Masonry Contractor: Aurora Masonry Ltd.
 Masonry Supplier: Brock White

For some curb appeal in a growing neighbourhood we worked with stone accents through the front of the bungalow styled homes. The masonry was applied to columns, attached garage and front of house for an elegant look. The stone was selected to compliment the siding finish and cedar trim. To accent the home a lighter colored stone was selected to blend into the natural surrounding landscape of the community.



MOUNTAIN VIEW TRADITIONAL

Owner: Barclay and Colleen Hambrook
 Architect: DEB Designs
 General Contractor: Maillot Homes
 Masonry Contractor: Westside Stone
 Masonry Supplier: Thunderstone Quarries
 Engineer: Richards Engineering

We incorporated masonry into the project to create a smooth transition from landscape to structure. Using the natural rundle stone of the area, the structure of the home sits with a backdrop of the very same stone on the horizon. This combination creates a natural and balanced visual of landscape scenery and the new building materials.

PRIVATE RESIDENCE FIREPLACES

Architect: Gregory McClung Architect Limited
 General Contractor: Chandos Construction
 Masonry Contractor: Scorpio Masonry (Northern) Inc.
 Masonry Supplier: Cast Supply Inc.

The fireplaces in this residence are a feature of the home due to the size of the elements. The stone was selected from a Castlegar Quarry based on the color and shapes. To enhance the rustic design of the home the owner wanted large wood burning masonry fireplaces as a feature.





RUNDLESTONE VILLA

Architect: Marshall Tittlemore Architects
 General Contractor: Sterling Construction Services
 Masonry Contractor: Apex Stoneworks
 Masonry Supplier: Rundle Rock Building Stone
 Engineer: ISL Engineering
 Stone Harvesters: Rundle Rock Building Stone

The Rundlestone Villa has incorporated an indigenous building stone discovered in the Bow Valley over 100 years ago. Overtime, masons working with this stone have discovered its vast versatility and enduring properties, all of which have been brilliantly exhibited within this outstanding and inviting 12,000 square foot estate villa.

The massive dry stacked full bed veneer Rundlestone walls of the exterior are carried into the home where the same masonry and stone style become statuette pillars standing at attention and aligning the great hallways which extend the full length of this estate. The blend of warm earthy-brown tones which this rock is famous for were chosen as these stone colours blend well with the wood used throughout the home and the surrounding mountains and forests.

SATHER RESIDENCE

Architect: Marshall Tittlemore Architects
 General Contractor: Tarchuk Construction
 Masonry Contractor: Tarchuk Construction
 Masonry Supplier: Brock White
 Engineer: ISL Engineering
 Interior/Exterior Designer,
 Millwork Supplier: Artwood Design Ltd.
 Stone and Concrete Supplier: BURNCO Rock Products
 Rundle Rock Building Stone: Kamenka Quarry

Nestled in the historic heart of the Canadian Rockies, this project needed to satisfy the stringent requirements of both the owners, and the Town of Banff Design Guidelines. Tarchuk Construction Ltd. was tasked with incorporating locally-sourced river and rundle stone into the overall theme of this majestic "Cabin on the River".



SHEPPARD RESIDENCE – RESTORATION

Owner: Jackie Sheppard
 Architect: DeJong Design Associates Ltd.
 General Contractor: Waterford Homes Inc.
 Masonry Contractor: Brxton Construction LP
 Masonry Supplier: Brock White
 Supplier: I-XL Masonry Supplies

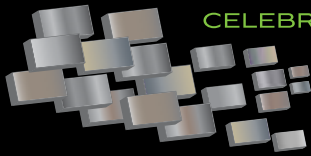
The original home was built in the early 1900s in the Mount Royal area of Calgary. The owner added on 27,600 brick and various shapes of Sandstone features for deck copings, railings, fireplace and column work. The stone came from the Uno Sandstone Quarry in Spain.

SLEDZ RESIDENCE

Architect: Pockar Masonry Ltd.
 General Contractor: Van Manna Homes Inc.
 Masonry Contractor: Pockar Masonry Ltd.
 Masonry Supplier: Brock White

The owners chose exterior masonry for this transitional inner-city home due to its timeless nature and maintenance free qualities. Lakewood Brick and Thunderstone Cut Rubble Rundle Stone complement each other as they provide a solid anchor to the home.





SINGLE FAMILY RESIDENTIAL



THE LEWISTON AT WATERMARK

Owner: Astoria Homes Ltd.
Masonry Contractor: Artisan Masonry
Masonry Supplier: I-XL Masonry Supplies
Engineer: Bravura Engineering

The majestic Lewiston is a jewel west of the Rockies, whose stunning architecture was inspired by "Alberta's Castle", the Fairmont Banff Springs Hotel. The Chateau-styled Lewiston has carefully considered design elements which are an expression of the picturesque historical legend including the dramatically pitched roof, accentuated arches, quaint old-world dormers and hemispherical turret. Consciously selected materials of premier quality were favored and the finest craftsmen

were sought. The sculpting perfection and resting of each stone in its place is sheer artistry as the stonework hugs each curve. In keeping with the natural historic theme, the Lewiston was massively enveloped in Banff Springs Cliffstone and contemplatively wrapped with masterful craftsmanship leaving the impression of early 1900's artistry.

Quintessential elements and masterful artistry blend old world and new to create a symphony of impressions that will continue to influence design, masonry excellence and application of natural elements conveying the distinctive character of the Lewiston.

THE WILLIAMSBURG

Owner: Astoria Homes Ltd.
Masonry Contractor: Artisan Masonry
Masonry Supplier: I-XL Masonry Supplies
Engineer: Bravura Engineering

The Williamsburg is as stately as her name suggests, bringing Old World stature and elegance to the picturesque community of Heritage Pointe. Inspired by the Architecture of Historic Virginia, with its' stately manors, the Williamsburg flaunts her Cyprus Ridge Orchard chiseled stone, Modena red brick, Juliet balcony and curved stately oak and stone entrance. Massively cloaked in stone, a closer look details the mastery of masonry with inclusions of immense stone chiseled and inlaid to create

the historic vision. Consciously selected and placed, the striking Modena red brick accentuates the curves of the doors and windows.

A rare and charming character "Grande Maison", thoughtful and visionary in design, bringing back elegance and offering an infectious blend of the new although steeped in traditions. Her stately grandeur embellished with ornate brackets, purposefully placed stone and iron grills evidences the unique characteristics of the much envied historic style combined with the masterful masonry artistry of the Williamsburg.



WATERS RESIDENCE

General Contractor: Gord White
Masonry Contractor: Gord White
Masonry Supplier: Gord White
Engineer: Gord White

The Waters house was moved to Okotoks from the intersection of Dunbow Road when Deerfoot trail was extended south of Calgary. The house has undergone a complete major renovation. In the interior the mason worked with existing ceiling heights to incorporate a load bearing beam into the Rumford style fieldstone fireplace rough in. The exterior facade is finished in natural full bed local sandstone and fieldstone.



Congratulations
to the participants of this year's
Alberta Masonry Design Awards!



Boulder CREEK® Stone Products

DESIGNED BY NATURE PERFECTED BY BOULDER CREEK™

www.bouldercreekstone.com
(763) 786-7138



Boulder Creek Stone is exclusively available at: **CAST SUPPLY**
(780) 479-2278
www.castsupply.ca



Boulder Creek is committed to the environment. Boulder Creek Stone is more than 50 percent recycled material.

Denver Public Library Architect: Michael Graves and Klipp Architecture



For all your cast stone needs
throughout Alberta please contact

CAST SUPPLY INC.
780-479-2278

www.castsupply.ca

NORTH AMERICA'S LARGEST MANUFACTURER OF CAST STONE



RUNDLE STONE - Distinctive, Beautiful and Unique

Sales Office: 403.257.2007 Quarry: 1.888.678.6234
101 George Biggy Sr. Road, Canmore, AB T1W 2W4
www.thunderstonequarry.com



ENDICOTT
3in
endicott.com

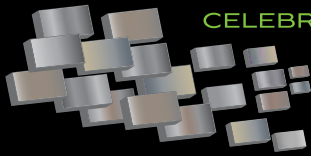
YES. IT'S BRICK.

Endicott's one-of-a-kind ironspot
clays create brick, thin brick, tile and
pavers that unleash the imagination.

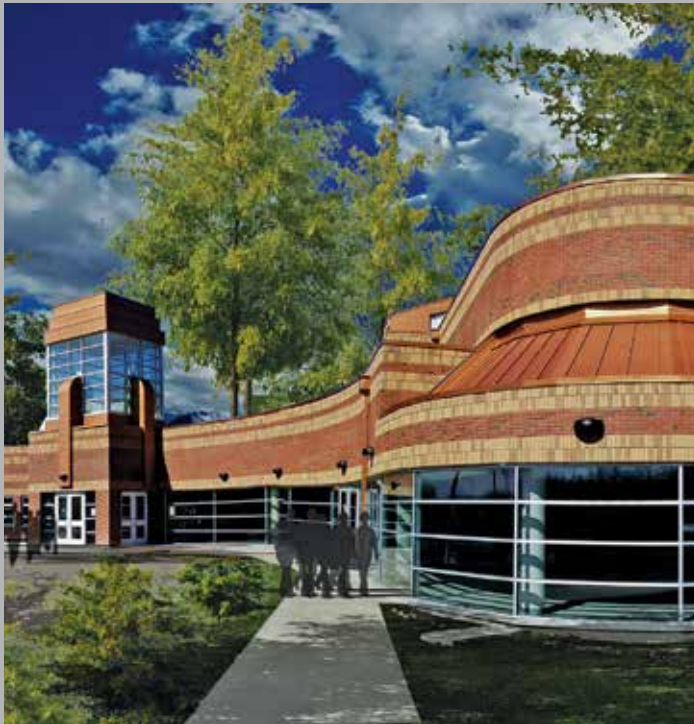


Distributed by Cast Supply

castsupply.ca



AWARD OF EXCELLENCE



JEAN BAPTISTE SEWEPAGAHAM ELEMENTARY SCHOOL

Owner: Little Red River Cree Nation / Aboriginal Affairs and Northern Development Canada
Architect: A&E Architectural & Engineering Group Inc.
General Contractor: Jen-Col Construction Inc.
Masonry Contractor: K.Hansen Masonry Ltd.
Masonry Supplier: Cast Supply Inc.; Expocrete Concrete Products Ltd.
Engineer: Williams Engineering Canada
Mechanical Engineering Consultant: Stantec Engineering

Brick and concrete blocks were chosen for a variety of reasons, including their rich character, thermal mass, low maintenance and sustainability. Due to the isolation factor of this school, brick masonry was the natural choice to create an inviting, warm, spiritual and durable facility that will stand the test of time.

The choice to use masonry was strengthened by the fact that masonry outperforms other wall systems in dynamic heating and cooling conditions, a crucial factor in designing facilities in the north, where the only heating source is a propane storage facility.

Brick masonry gave us the flexibility and adaptability to achieve visual unity and uniformity by creating smaller and un-intimidating building components suitable in scale to young learners.

The fire safety attribute of masonry is ideal for school facilities especially in isolated communities where firefighting resources are limited.

AWARD OF MERIT



718 8TH AVE SW

Owner: Arlington Street Investments
Architect: Duel Architecture
General Contractor: Ikon Construction Management
Masonry Contractor: Pockar Group of Companies
Masonry Supplier: Lafarge Canada Inc.
Engineer: Wolsey Structural Engineering

Looking to attract new tenants, the existing downtown building underwent a challenging redevelopment to achieve a clean modern look. The scope of the project required the addition of two stories above the already existing structure. Concrete block was the ideal solution to meet both the structural and code requirements. The three concrete block walls created the loadbearing structure as well as the required fire protection. The use of concrete block also greatly influenced the building's appearance and color pallet. Embracing the natural

concrete color of the masonry, the color selections for the front facade were chosen to create a cohesive modern monochromatic look. A concrete block elevator shaft was also added to the front of the building. The elevator shaft provided the necessary circulation, and also created a strong vertical element juxtaposing the horizontal elements. Additional challenges encountered included restoration to the existing concrete block walls, and the site conditions required the use of a crane for masonry installation.

HONOURABLE MENTION



SACRED HEART CHURCH

Owner: Sacred Heart Church
Architect: Ron Boruk Architect Ltd.
General Contractor: Pentagon Structures Ltd.
Masonry Contractor: Majestic Masonry Ltd.
Masonry Supplier: Alomar Brick & Stone
Engineer: BEI Engineering Inc.

This job was an addition to a 100 year old church. It is a block structure with brick veneer. The brick were blended from four different types of brick to match the existing perfectly.



COUNTRY HILLS TOYOTA EXPANSION

Owner: Jim Jiwani & Saleem Budhwani
 Architect: Arup Datta Architect Ltd.
 General Contractor: Aman Building Corporation
 Masonry Contractor: Pockar Masonry Ltd.
 Masonry Supplier: Lafarge Canada Inc.
 Engineer: Janto Engineering Inc.

This project is a 'Unique Auto Retail Dealership' for retailing cars, trucks, hybrid cars and used cars all under one roof, with a service facility for 26 vehicles at a time.

The project required tall large expanse of walls for column free spaces for servicing and retailing cars for which the use of masonry was prudent. Masonry use provided

substantial exterior wall for installation of exterior insulation and stucco finish. It provided an efficient interior finished wall surface requiring minimal maintenance for at times there is a damp interior environment and walls are subject to small equipment impact and storage. It helped expediting the speed of construction of the load bearing wall structures for roof and floor areas. This also provided structure and enclosure to large spaces for weather protected interior work. Masonry use provided a great image of a strong well-built building that will be there to last. Combining Alucobond panels with lots of glazing created a contemporary image of the building for retailing cars, which is inviting to all customers.

CRAFTSMAN COLLISION

Owner: AltaView Holdings (M.R.) Ltd.
 Architect: Rick Balbi Architect Ltd.
 General Contractor: Craftsman Ventures Ltd.
 Masonry Contractor: Pockar Masonry Ltd.
 Masonry Supplier: Lafarge Canada Inc.
 Engineer: CA Boom Engineering Ltd.

Concerned about durability and strength, Craftsman Collision chose load bearing split face concrete block when constructing their new facility in Royal Oak, Calgary. Concrete block provided the structural capacity required while ensuring an attractive and low maintenance interior and exterior.



EDMONTON REMAND CENTRE

Owner: Government of Alberta
 Architect: ONPA Architects
 General Contractor: Stuart Olson
 Masonry Contractor: Scorpio Masonry (Northern) Inc.
 Masonry Supplier: Expocrete Concrete Products Ltd.; Cast Supply Inc.
 Engineer: BPTec Engineering

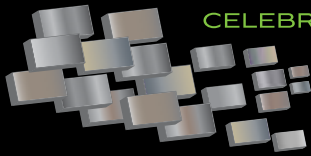
The development of the exterior design characteristics and extensive use of masonry for the "public face" of the Edmonton Remand Centre recognizes and balances several objectives. These include the development of building facade expressions, which appropriately portray the building's function and identity; A design expression that acknowledges an important provincial building for Justice, with efforts to relate well to the community while responding to security and environmental conditions. The exterior design with the use of masonry establishes the identity of the centre - a strong, secure and safe place, with a distinct aesthetic.

JIFFY LUBE

Owner: Lube X / Jiffy Lube
 Architect: Lube X / Jiffy Lube
 General Contractor: Temple Contracting
 Masonry Contractor: Pockar Masonry Ltd.
 Masonry Supplier: Expocrete Concrete Products Ltd.; Brock White
 Engineer: Venture Engineering Consultants Ltd.

The owner of this chain of Jiffy Lube/LubeX has a strong preference for masonry materials for all its buildings. Structural masonry was used on this project due to its strength, ability to meet the buildings code, longevity of the product and durability. The masonry will perform well and look great for years to come.





AWARD OF EXCELLENCE



EIGHTH AVENUE PLACE

Owner: Hines as Agent for Immeubles SNPL Inc.
 Architect: Pickard Chilton Architects
 General Contractor: EllisDon Construction Services Inc.
 Masonry Contractor: G & A Masonry Ltd.
 Masonry Supplier: Expocrete Concrete Products Ltd.
 Engineer: BBSTEK Engineering
 Field Architect: Gibbs Gage
 Envelope Engineer: Halcrow Yolles

A truly monumental piece of modern architecture, it is also one of the first certified LEED Platinum office complexes in all of Canada. It is a physical manifestation and affirmation of the city's connection to the Alberta landscape and the independent spirit of its people. Thin natural stone used to clad podium of two glazed 40+ storey towers that mimic the mountains to the west of Calgary.

AWARD OF MERIT



BLACKFOOT POINT

Owner: Centron Group of Companies
 Architect: NORR Architects Engineers Planners
 General Contractor: Centron Group of Companies
 Masonry Contractor: Pockar Masonry Ltd.
 Masonry Supplier: I-XL Masonry Supplies
 Engineer: Grant Structural Engineering

Blackfoot Point Business Park, situated on top of the Deerfoot Bluffs, is adjacent to one of Calgary's largest retail developments. This contemporary office campus consists of 4 buildings; one and two storeys in height. Home to office tenants and a laboratory, the site delivers a modern architectural presence with its use of colour and bold articulations. Being respectful to the natural aesthetics of the surrounding bluffs, the project uses ledge stone that blends into the adjoining

landscape. The warm hues and light tones embedded in the stone are aesthetically pleasing and in proportion to the pedestrian scale. Architecturally, the stone elements arise to become monumental at their peak height. This stone feature was important in the overall design strategy which was to convey a notion of longevity and strength. These concepts are prevalent throughout all buildings in the stone materials and colour palette.

HONOURABLE MENTION



EPCOR TOWER – STATION LANDS

Owner: Station Lands Ltd.
 Architect: Kasian Architecture Interior Design and Planning Ltd.
 General Contractor: Ledcor Construction Limited
 Masonry Contractor: Brxton Construction LP
 Masonry Supplier: Brock White

Epcor Tower Station Lands is currently the tallest building in Edmonton at 29 storeys. Our scope of work included the supply and installation of Tyndall stone panels

and Atlantic Black granite panels on a clip system on the interior and exterior of the building and exterior granite pavers.



CEILI'S IRISH PUB

Owner: The Ceili's Group Inc.
 Architect: Nigel Walker & Associates
 General Contractor: Chandos Construction
 Masonry Contractor: Pockar Masonry Ltd.
 Masonry Supplier: I-XL Masonry Supplies

Eldorado Stone's manufactured modular thin veneer brick was used in the interior of this popular Irish pub in SW Calgary. The brick created a feeling of warmth reminiscent of traditional pubs in Ireland while providing strong and maintenance free qualities.

CROWFOOT CROSSING SPORTCHEK

Owner: Hydro-Québec Pension Fund
 Architect: Duel Architecture
 General Contractor: Ledcor Group
 Masonry Contractor: Pockar Masonry Ltd.
 Masonry Supplier: Brock White; I-XL Masonry Supplies
 Engineer: Wolsey Structural Engineering
 Designer: Pappas Design Studio Inc.

As an existing shopping plaza, Crowfoot Crossing Shopping Centre underwent a major overhaul to update the appearance. Working with the constraints of the existing facade, manufactured stone was chosen to replace the existing brick and update the overall appearance.

The intent behind the facelift was to create a destination shopping centre that was vital and current. The new design was a clean and modern reinterpretation of the existing shopping plaza. Manufacture stone was utilized to provide an elevation rich in both color and texture. The use of manufactured stone helped create the vision of a high end shopping centre, attracting both great tenants and new customers. Considerable attention was paid to the masonry details with numerous styles of stone being used to create visual interest. Landscaping was also reworked and expanded to further add to the appeal of the site. Challenges included finding that the studs were inadequate for the new materials, and the location of the existing angle irons made them difficult to reuse. As well, the shopping center remained fully operational during the renovation.



LEGACY

General Contractor: D. Floyd Construction Ltd.
 Masonry Contractor: Rushing River Masonry
 Masonry Supplier: Montana Rockworks

Legacy's theme is that of timeless charm and lasting quality. Images of an 'old world courtyard' served as the underlying inspiration for the community's landscape architectural flavour.

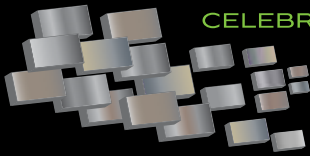
Carefully placed, artfully designed architectural monuments highlight Legacy's ageless quality and help establish a strong & unique sense of place. The use of natural masonry materials applied with care and attention to detail further enhance the richness of Legacy's character.

ROYAL VIEW MEMORIAL CEMETERY ENTRANCE FEATURE

Owner: City of Lethbridge
 Architect: LEES + Associates
 General Contractor: Bos Scapes Inc.
 Masonry Contractor: Stonestar Rockwerks
 Masonry Supplier: I-XL Masonry Supplies
 Engineer: Stantec
 Stone Supplier: K2 Stone; Bedrock Granite Sales

Masonry was incorporated for its low maintenance and high aesthetic appeal. The cemetery walls convey a sense of permanence while adding to the overall beauty of the site. The curved walls complement the landscape while the contrasting coal seams pay homage to the local geology and the area's rich history.





THIN MASONRY VENEER – COMMERCIAL



SILVERADO SOBEY'S

Owner: Ronmor Developers Inc.
 Architect: Nejmark
 General Contractor: Elan Construction Ltd.
 Masonry Contractor: Pockar Masonry Ltd.
 Masonry Supplier: Expocrete Concrete Products Ltd.;
 I-XL Masonry Supplies; Montana
 Rockworks

The combination of using thin stone veneer, brick and splitface concrete block Masonry was instrumental in making what could have been a relatively utilitarian building into an attractive and durable structure that fits well into the S.W. residential community of Silverado and will look great for years to come.

The Mason's Choice!



233183 Range Road 283
 Calgary, Alberta T1X 0J9
 Calgary

Over 35 years of excellence in
 Pre-Blended Mortar and Concrete Products

1-800-596-3844 | www.basalite.com

ARTISTRY OF STONE



Specializing In:



- Harristone (Manufactured Stone)
- Natural Stone Veneers International (Natural Stone)
- Merrillstone (Natural Stone)
- A variety of masonry mortars, tools, lathe, pigments and accessories
- Custom steps and decks in a variety of colors and finishes, and are also available with LED lights installed in the risers

Working closely with:

- Architect's, Contractors, Homebuilders & Mason's
- Interior and Exterior Designers & And Home Owners

CONTACT INFORMATION:

Georgina Kostyuk | 12844-149 Street | Edmonton, AB. T5V 1A4
 Ph: 780-638-1760 Mobile: 587-338-0375

Dave Mundy | 430 Lantern Street | Red Deer, AB T4E 0A5
 Ph: 1-888-432-4087 Mobile: 403-352-8261

Sioux City Brick

Since 1913

PREFERRED BY
 ARCHITECTS AND
 MASONS, SIOUX CITY
 BRICK HAS PRODUCED
 QUALITY BRICK FOR
 HOMES AND COMMERCIAL
 BUILDINGS FOR
 OVER 100 YEARS

AVAILABLE IN THE
 US AND CANADA

CONTACT CAST SUPPLY
 IN EDMONTON, AB



WWW.SIOUXCITYBRICK.COM

AWARD OF EXCELLENCE



CHERNOFF RESIDENCE

Architect: Chernoff Architect Inc.
General Contractor: Nadezzda Developments Inc.
Masonry Contractor: Pockar Masonry Ltd.
Masonry Supplier: Arriscraft
Engineer: KTA Structural Engineers

This lake side home was designed as a timeless retreat from busy city life. The home was organized in such a way to take full advantage of the lake on which it borders, by orienting each room to have a view of the lake. Masonry was a large proponent of the design. Planes of stone walls were collided on the majority of the front facade, presenting the public view with a rich and playful interaction of stone, glass, wood and steel. The Adair Limestone was chosen for its durability, richness and depth of gentle colour, as a way of easing the maintenance on the exterior, and creating softness on the interior. The timeless quality of the stone, combining the other surface materials with impeccable craftsmanship creates a project of luxurious appeal. The stone used on the project extends around the entire building using thin stone material on the fascias, full bed on patios and stone walls which pull through into the interior of the home.

AWARD OF MERIT



THE GALA IN APPLEWOOD

Owner: Applewood Partnership Ltd.
Architect: NORR Architects
 Engineers Planners
General Contractor: Applewood
 Development Ltd.
Masonry Contractor: Bear Stone
 Masonry
Masonry Supplier: Brock White
Engineer: Wiebe Forest Engineering

A stunning building that has an aesthetic appeal combined with the low maintenance qualities of a stone veneer. The intent is to have a long lasting and maintenance free building. There are 2 elevated shafts and a firewall to add a structural element and fireproofing to the building. The use of stone in this project is a consistent element that runs through the exterior of the Gala building. The entire bottom half of the building and all deck columns are beautifully clad

in a stone veneer. The use of masonry is contrasted with siding and stucco. These design elements and finishes mesh seamlessly. The facade creates interest and the stone adds texture which articulates the building's form. Stone was laid in a dry stack with a dark charcoal grout which enhances the look of the building. Gala has a large central courtyard for all residents to enjoy, and the masonry ties in well with all the landscaping.

HONOURABLE MENTION



PRIVATE RESIDENCE

Masonry Contractor: Bond
 Masonry Ltd.
Masonry Supplier: K-2 Stone

The home owner picked a natural thin stone for the exterior to showcase the log home design in order to give it that cabin in the mountain look.

IMAGINE THE POSSIBILITIES

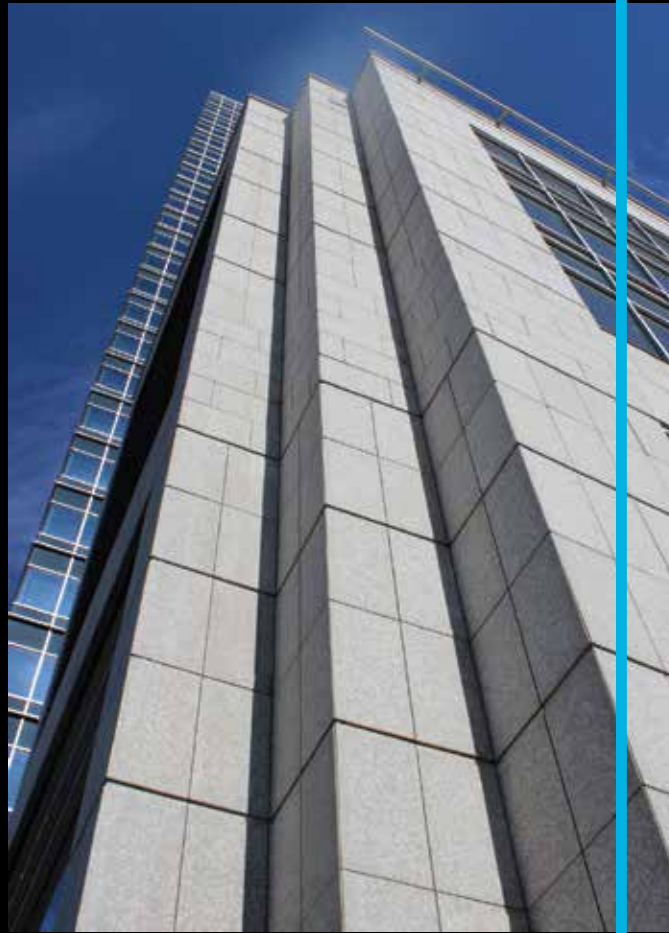
I-XL Masonry—shining a spotlight on design since 1912



I-XL Masonry Supplies

www.ixlmasonry.com

You knew us as **GRACOM**



We have changed our name – everything else remains the same

BRXTON

Same great team of people, range of services and unwavering commitment to safety and your project's success

Visit us at **BRXTON**.com